

APP CRS	Rwy Idg	4058
178°	TDZE	28
	Apt Elev	28

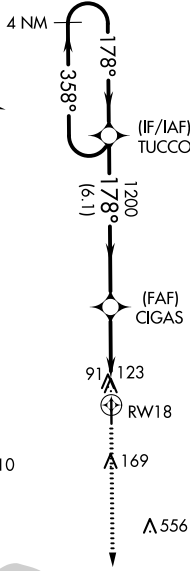
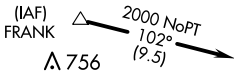
RNAV (GPS) RWY 18

SLIDELL (ASD)

RNP APCH.		MISSED APPROACH: Climb to 2000 direct HOOTY and hold.	
NA Helicopter visibility reduction below 1 SM NA.			

ASOS 132.475	NEW ORLEANS APP CON 133.15 290.3	UNICOM 122.8 (CTAF) 0	GCO 135.075
------------------------	--	---------------------------------	-----------------------

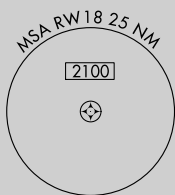
Procedure NA for arrivals at FRANK via V70 westbound.



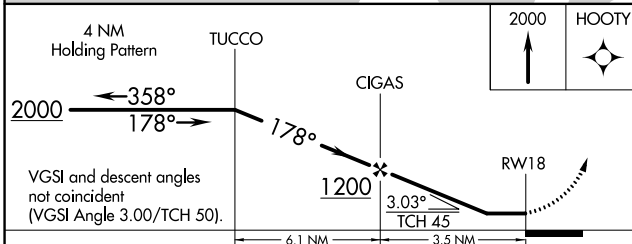
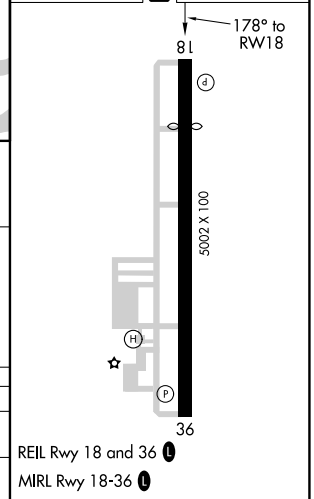
Λ 692

Λ 710

Λ 556



ELEV 28	D	TDZE 28
---------	----------	---------



CATEGORY	A	B	C	D
RNAV MDA	400-1 372 (400-1)			NA
CIRCLING	480-1	452 (500-1)	580-1½ 552 (600-1½)	NA

REIL Rwy 18 and 36 **0**
MIRL Rwy 18-36 **0**

SC-4, 27 JAN 2022 to 24 FEB 2022

SC-4, 27 JAN 2022 to 24 FEB 2022

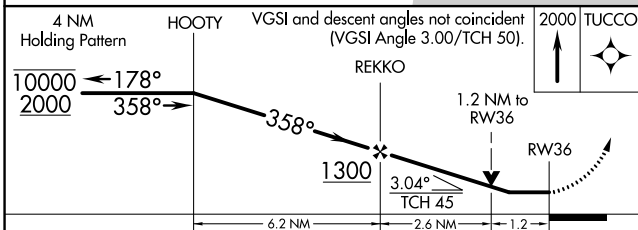
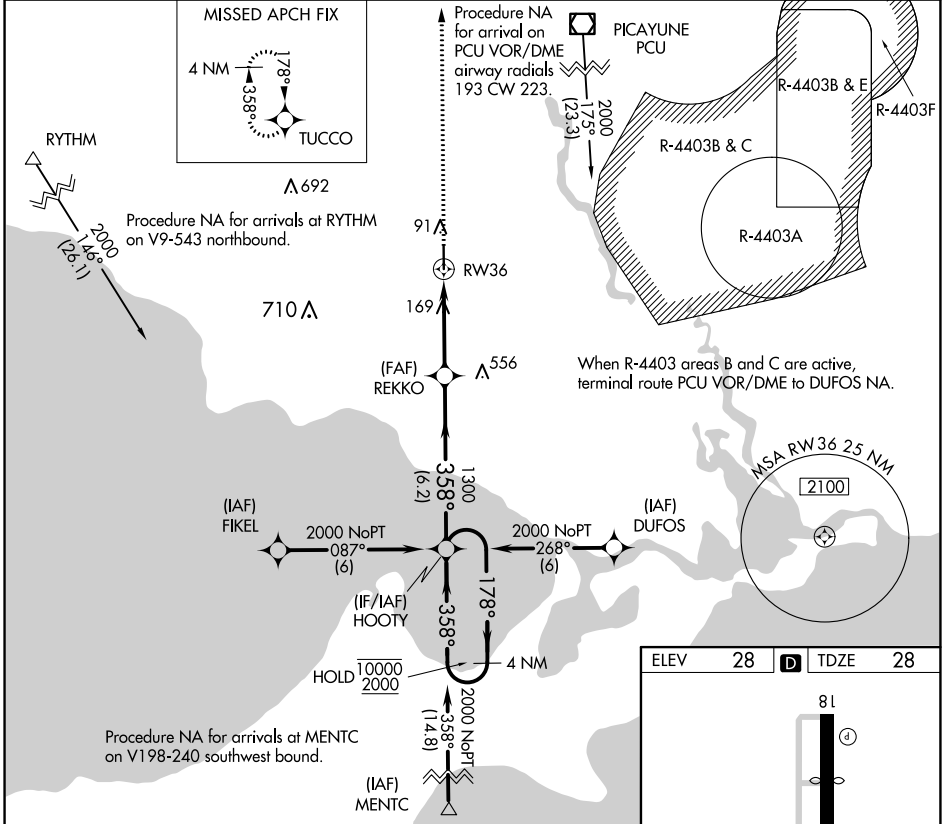
RNAV (GPS) RWY 36

SLIDELL (ASD)

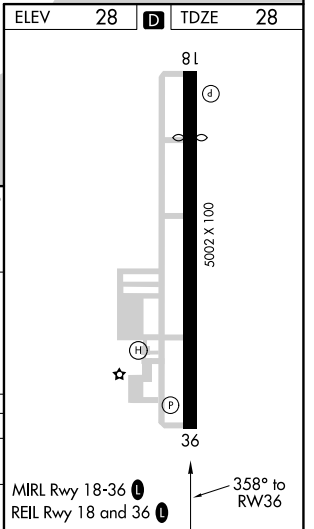
APP CRS	Rwy Ldg	5001
358°	TDZE	28
	Apt Elev	28

RNP APCH.		MISSED APPROACH: Climb to 2000 direct TUCCO and hold.
Rwy 36 helicopter visibility reduction below 3/4 SM NA.		

ASOS 132.475	NEW ORLEANS APP CON 133.15 290.3	UNICOM 122.8 (CTAF) 0	GCO 135.075
------------------------	--	---------------------------------	-----------------------



CATEGORY	A	B	C	D
LNVA MDA	460-1	432 (500-1)	460-1 1/4 432 (500-1 1/4)	NA
CIRCLING	480-1	452 (500-1)	520-1 1/2 492 (500-1 1/2)	NA



SC-4, 27 JAN 2022 to 24 FEB 2022

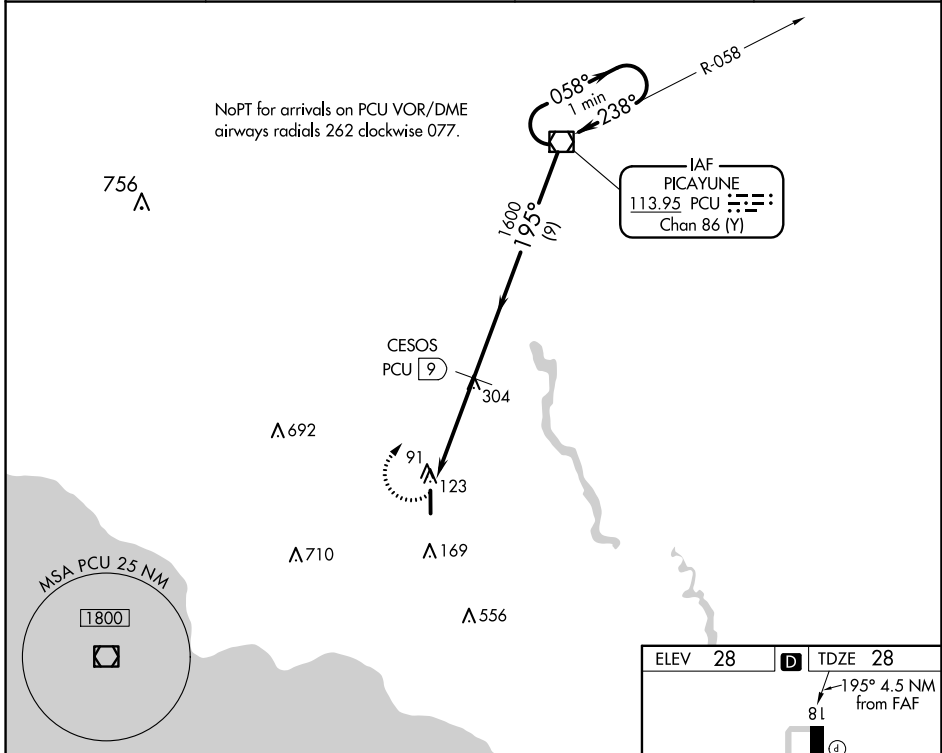
SC-4, 27 JAN 2022 to 24 FEB 2022

VOR/DME PCU 113.95 Chan 86 (Y)	APP CRS 195°	Rwy Idg 4058 TDZE 28 Apt Elev 28
--	------------------------	---

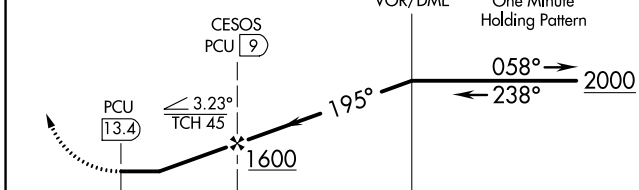
VOR/DME RWY 18

SLIDELL (ASD)

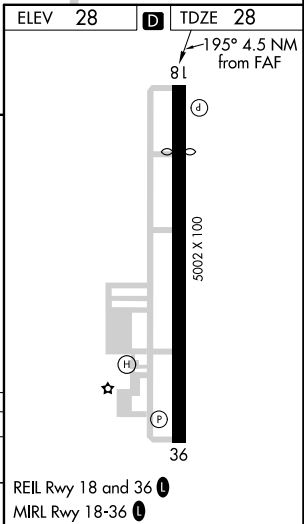
<p>▽ Night landing Rwy 18 NA. ▲ NA Helicopter visibility reduction below 1 SM NA.</p>		<p>MISSED APPROACH: Climbing right turn to 2000 direct PCU VOR/DME and hold.</p>	
ASOS 132.475	NEW ORLEANS APP CON 133.15 290.3	UNICOM 122.8 (CTAF) 0	GCO 135.075



2000	PCU	VGSI and descent angle not coincident (VGSI Angle 3.00/TCH 50).
------	-----	---



CATEGORY	A	B	C	D
S-18	460-1	432 (500-1)	460-1¼ 432 (500-1¼)	NA
CIRCLING	480-1	452 (500-1)	580-1½ 552 (600-1½)	NA



SC-4, 27 JAN 2022 to 24 FEB 2022

SC-4, 27 JAN 2022 to 24 FEB 2022