

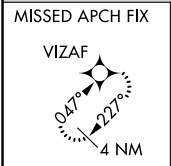
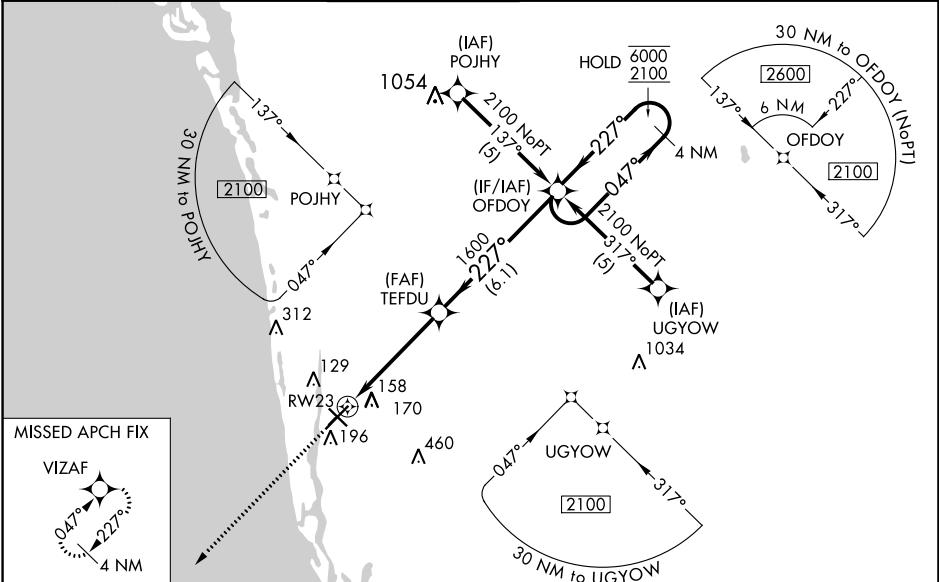
WAAS CH <b>69314</b> <b>W23A</b>	APP CRS <b>227°</b>	Rwy ldg TDZE Apt Elev	<b>5000</b> <b>8</b> <b>8</b>
--	------------------------	-----------------------------	-------------------------------------

# RNAV (GPS) RWY 23

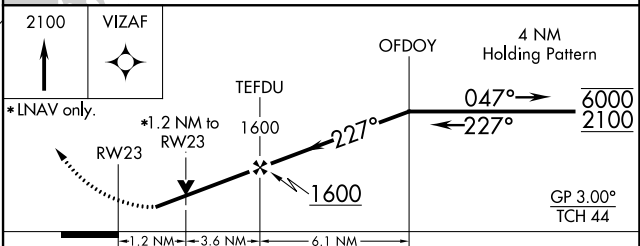
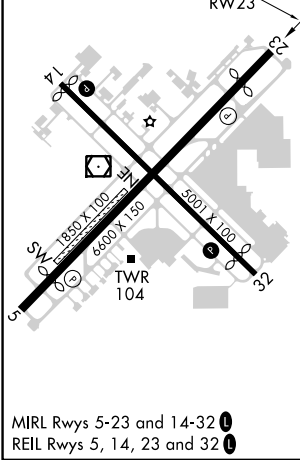
NAPLES MUNI (APF)

RNP APCH.		MISSED APPROACH: Climb to 2100 direct VIZAF and hold.			
<p><b>▽</b> <b>▲</b> Rwy 23 helicopter visibility reduction below <math>\frac{3}{4}</math> SM NA. For uncompensated Baro-VNAV systems, LNAV/VNAV NA below 5°C or above 54°C.</p>					

ATIS <b>134.225</b>	FORT MYERS APP CON* <b>124.125 371.85</b>	NAPLES TOWER* <b>128.5 (CTAF) 0</b>	GND CON <b>121.6</b>	CLNC DEL <b>118.0</b>	CLNC DEL <b>124.125</b> (When twr closed)
------------------------	--	--	-------------------------	--------------------------	---



ELEV 8	<b>D</b>	TDZE 8
--------	----------	--------



CATEGORY	A	B	C	D
LPV DA		313- $\frac{7}{8}$	305 (400- $\frac{7}{8}$ )	
LNAV/VNAV DA		461-1 $\frac{3}{8}$	453 (500-1 $\frac{3}{8}$ )	
LNAV MDA	440-1	432 (500-1)	440-1 $\frac{1}{4}$	432 (500-1 $\frac{1}{4}$ )
CIRCLING	580-1	572 (600-1)	680-2 672 (700-2)	820-2 $\frac{3}{4}$ 812 (900-2 $\frac{3}{4}$ )

WAAS CH <b>73015</b> <b>W05A</b>	APP CRS <b>047°</b>	Rwy ldg TDZE Apt Elev	<b>5000</b> <b>8</b> <b>8</b>
--	------------------------	-----------------------------	-------------------------------------

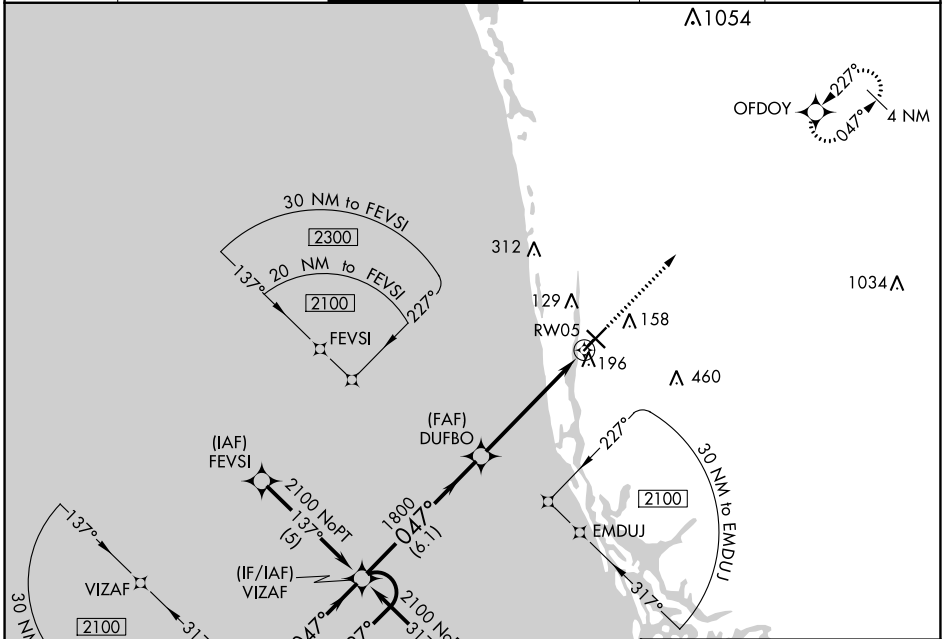
# RNAV (GPS) RWY 5

NAPLES MUNI (APF)

RNP APCH.  
 For uncompensated Baro-VNAV systems,  
 LNAV/VNAV NA below 5°C or above 54°C.

MISSED APPROACH: Climb to 2100 direct OFDOY and hold.

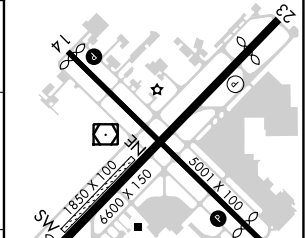
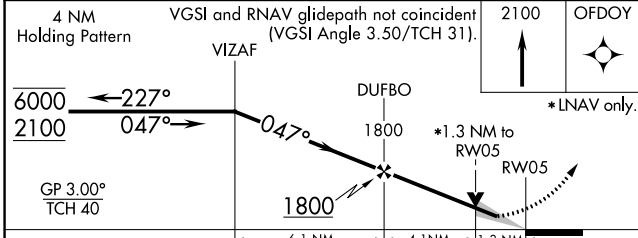
ATIS <b>134.225</b>	FORT MYERS APP CON* <b>124.125 371.85</b>	NAPLES TOWER* <b>128.5 (CTAF) 0</b>	GND CON <b>121.6</b>	CLNC DEL <b>118.0</b>	CLNC DEL <b>124.125</b> (When twr closed)
------------------------	--	--	-------------------------	--------------------------	---



SE-3, 22 FEB 2024 to 21 MAR 2024

SE-3, 22 FEB 2024 to 21 MAR 2024

ELEV 8	TDZE 8
--------	--------



CATEGORY	A	B	C	D
LPV DA		295- <sup>7</sup> / <sub>8</sub>	287 (300- <sup>7</sup> / <sub>8</sub> )	
LNAV/VNAV DA		446- <sup>1</sup> / <sub>4</sub>	438 (500- <sup>1</sup> / <sub>4</sub> )	
LNAV MDA	540-1	532 (600-1)	540- <sup>1</sup> / <sub>2</sub>	532 (600- <sup>1</sup> / <sub>2</sub> )
CIRCLING	580-1	572 (600-1)	680-2 672 (700-2)	820- <sup>2</sup> / <sub>4</sub> 812 (900- <sup>2</sup> / <sub>4</sub> )

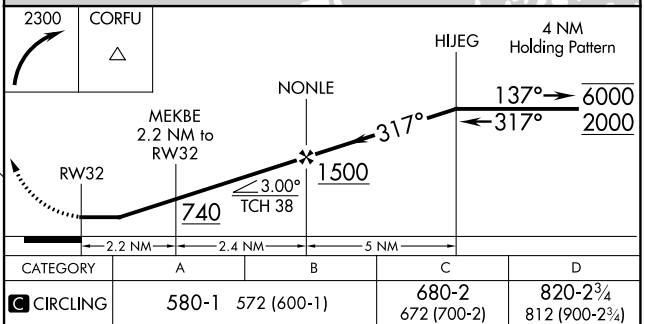
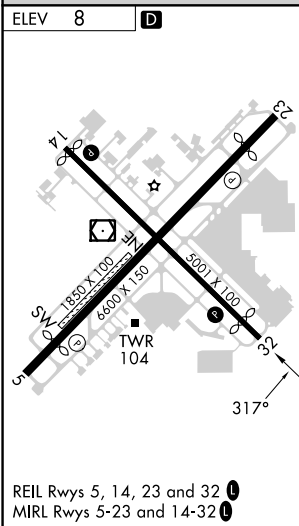
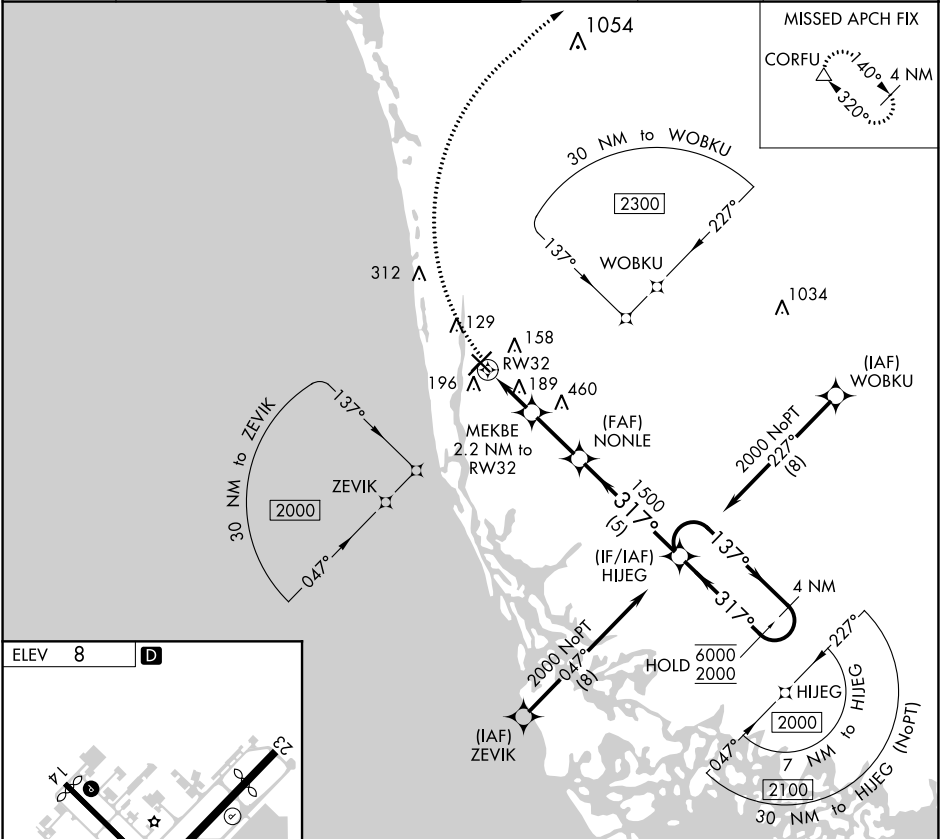
TWR 104  
 REIL Rwy 5, 14, 23 and 32  
 MRL Rwy 5-23 and 14-32

APP CRS <b>317°</b>	Rwy Idg TDZE Apt Elev	<b>N/A</b> <b>N/A</b> <b>8</b>
------------------------	-----------------------------	--------------------------------------

# RNAV (GPS)-A

NAPLES MUNI (APF)

RNP APCH.			MISSED APPROACH: Climbing right turn to 2300 direct CORFU and hold.		
ATIS <b>134.225</b>	FORT MYERS APP CON* <b>124.125 371.85</b>	NAPLES TOWER* <b>128.5 (CTAF)</b>	GND CON <b>121.6</b>	CLNC DEL <b>118.0</b>	CLNC DEL <b>124.125</b> (When twr closed)



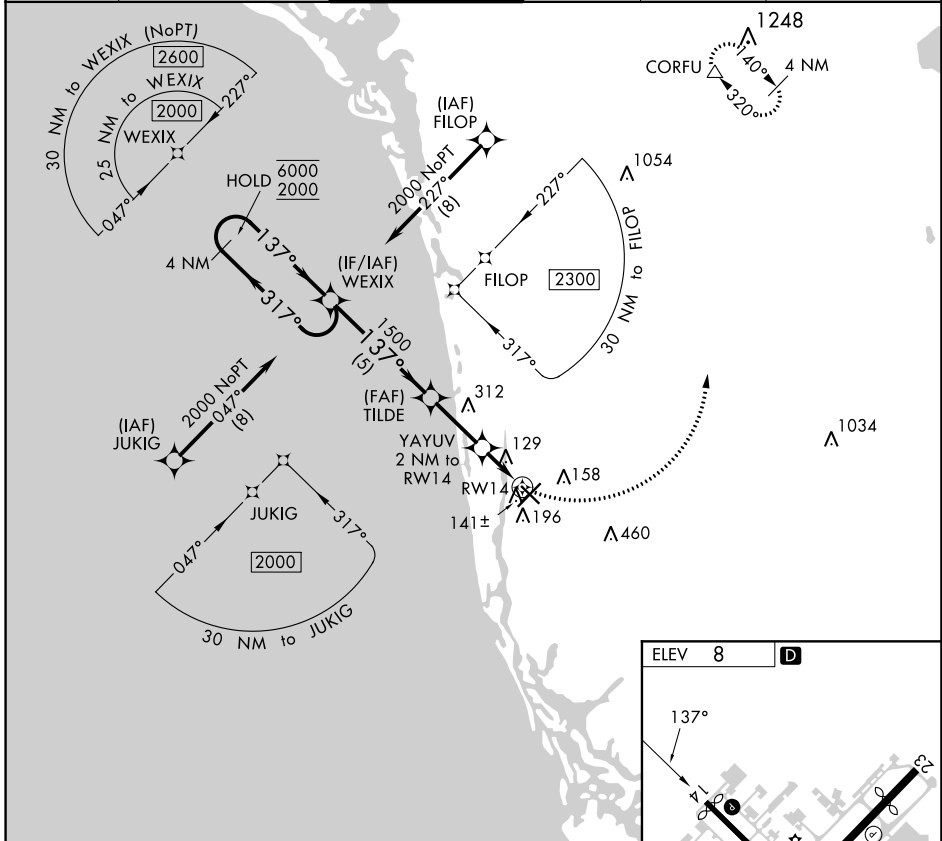
APP CRS	Rwy Idg	N/A
<b>137°</b>	TDZE	N/A
	Apt Elev	<b>8</b>

# RNAV (GPS)-B

NAPLES MUNI (APF)

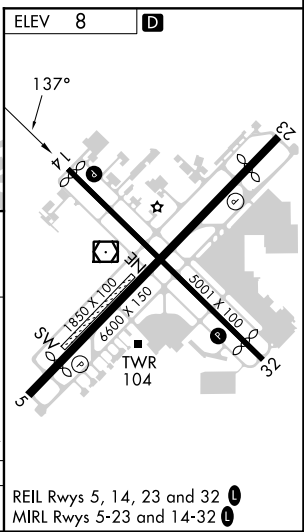
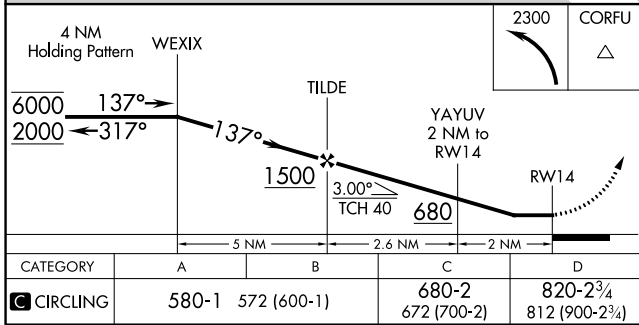
RNP APCH.			MISSED APPROACH: Climbing left turn to 2300 direct CORFU and hold.		

ATIS <b>134.225</b>	FORT MYERS APP CON★ <b>124.125 371.85</b>	NAPLES TOWER★ <b>128.5 (CTAF) 0</b>	GND CON <b>121.6</b>	CLNC DEL <b>118.0</b>	CLNC DEL <b>124.125</b> (When twr closed)
------------------------	--	--	-------------------------	--------------------------	---



SE-3, 22 FEB 2024 to 21 MAR 2024

SE-3, 22 FEB 2024 to 21 MAR 2024



CATEGORY	A	B	C	D
CIRCLING	580-1 572 (600-1)	680-2 672 (700-2)	820-2¾ 812 (900-2¾)	

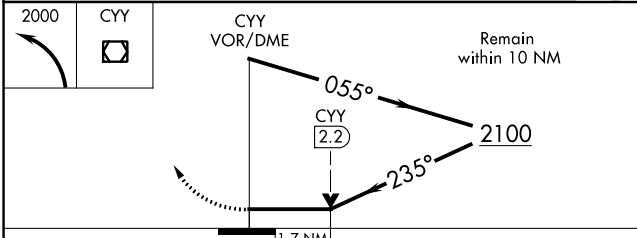
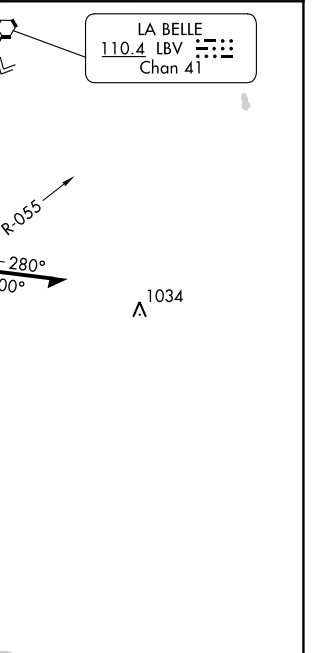
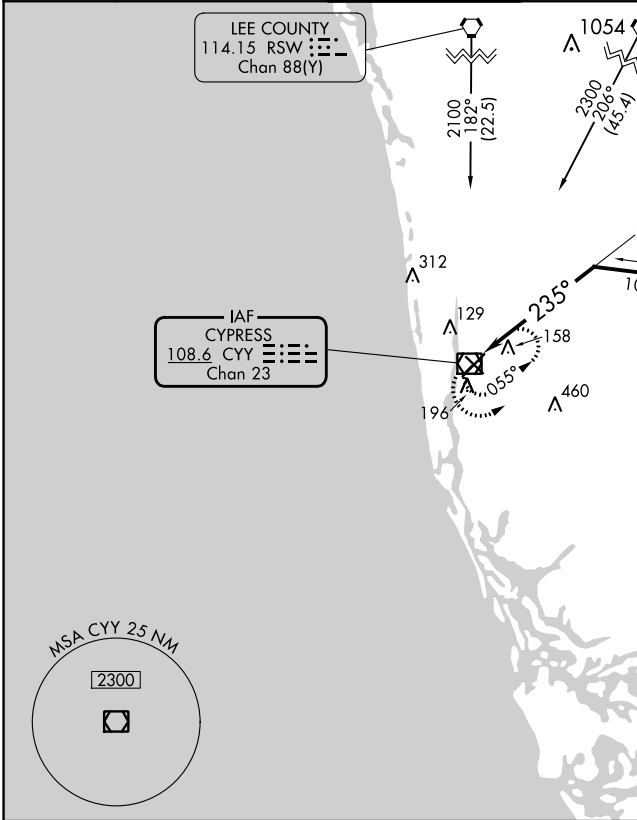
REIL Rwy 5, 14, 23 and 32  
MIRL Rwy 5-23 and 14-32

VOR/DME CY <b>108.6</b> Chan 23	APP CRS <b>235°</b>	Rwy Idg TDZE Apt Elev	<b>5000</b> <b>8</b> <b>8</b>
---------------------------------------	------------------------	-----------------------------	-------------------------------------

# VOR RWY 23

NAPLES MUNI (APF)

Helicopter visibility reduction below 3/4 SM NA.		MISSED APPROACH: Climbing left turn to 2000 in CYY VOR/DME holding pattern.		
ATIS <b>134.225</b>	FORT MYERS APP CON* <b>124.125 371.85</b>	NAPLES TOWER* <b>128.5</b> (CTAF)	GND CON <b>121.6</b>	CLNC DEL <b>118.0</b>
		CLNC DEL <b>124.125</b> (When twr closed)		



ELEV 8	TDZE 8
MRL Rwy 5-23 and 14-32 REIL Rwy 5, 14, 23 and 32	

CATEGORY	A	B	C	D
S-23	600-1 592 (600-1)		600-1½ 592 (600-1½)	600-1¾ 592 (600-1¾)
CIRCLING	600-1 592 (600-1)		680-2 672 (700-2)	820-2¾ 812 (900-2¾)

SE-3, 22 FEB 2024 to 21 MAR 2024

SE-3, 22 FEB 2024 to 21 MAR 2024

NAPLES, FLORIDA

AL-6020 (FAA)

24025

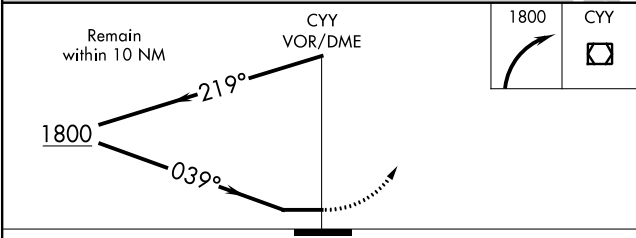
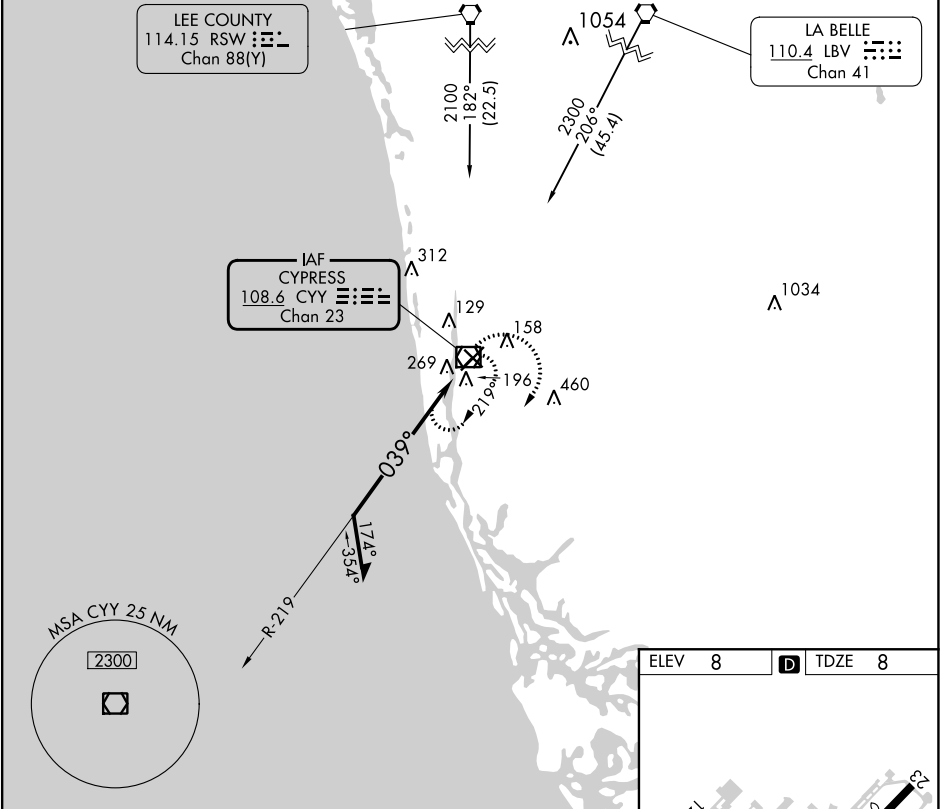
VOR/DME CYY	APP CRS	Rwy Idg	5000
<b>108.6</b>	<b>039°</b>	TDZE	<b>8</b>
Chan 23		Apt Elev	<b>8</b>

# VOR RWY 5

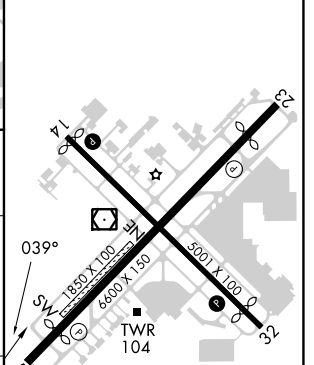
NAPLES MUNI (APF)

**MISSED APPROACH:** Climbing right turn to 1800 in CYY VOR/DME holding pattern.

ATIS <b>134.225</b>	FORT MYERS APP CON* <b>124.125 371.85</b>	NAPLES TOWER* <b>128.5 (CTAF) 0</b>	GND CON <b>121.6</b>	CLNC DEL <b>118.0</b>	CLNC DEL <b>124.125</b> (When twr closed)
------------------------	--	--	-------------------------	--------------------------	---



ELEV 8	TDZE 8
--------	--------



CATEGORY	A	B	C	D
S-5	580-1	572 (600-1)	580-1 $\frac{5}{8}$	572 (600-1 $\frac{5}{8}$ )
<b>CIRCLING</b>	580-1	572 (600-1)	680-2 672 (700-2)	820-2 $\frac{3}{4}$ 812 (900-2 $\frac{3}{4}$ )

MIRL Rwy 5-23 and 14-32  
REIL Rwy 5, 14, 23 and 32

NAPLES, FLORIDA  
Amdt 5C 25FEB21

26°09'N-81°47'W

# NAPLES MUNI (APF) VOR RWY 5

SE-3, 22 FEB 2024 to 21 MAR 2024

SE-3, 22 FEB 2024 to 21 MAR 2024