

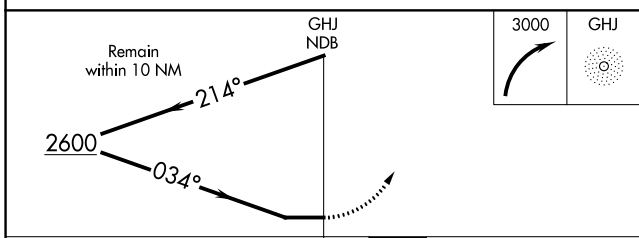
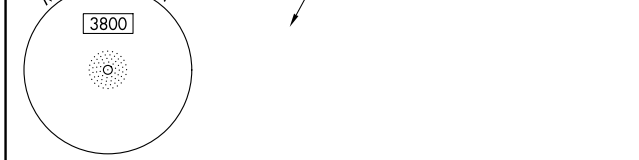
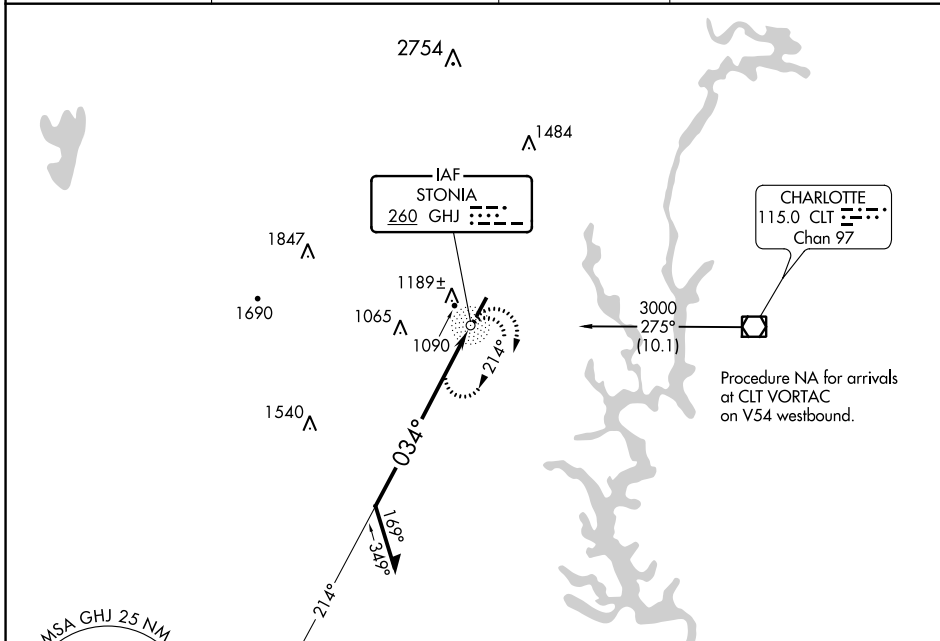
NDB GHJ 260	APP CRS 034°	Rwy ldg TDZE Apt Elev	3770 798 798
-----------------------	------------------------	-----------------------------	---

NDB RWY 3

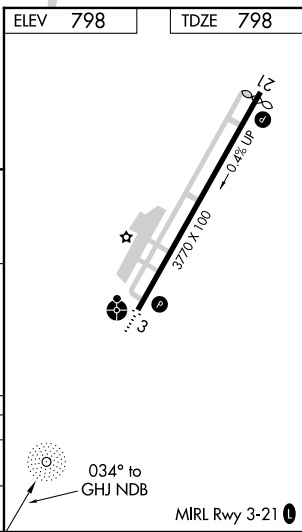
GASTONIA MUNI (AKH)

	Inop table does not apply to Cats B and C.		MISSED APPROACH: Climbing right turn to 3000 in GHJ NDB holding pattern.
	ASOS 135.725	CHARLOTTE APP CON 120.05 257.2	CLNC DEL 127.2

ASOS 135.725	CHARLOTTE APP CON 120.05 257.2	CLNC DEL 127.2	UNICOM 123.0 (CTAF) 0
------------------------	--	--------------------------	---------------------------------



CATEGORY	A	B	C	D
S-3	1540-3/4 742 (800-3/4)	1540-1 1/4 742 (800-1 1/4)	1540-2 1/4 742 (800-2 1/4)	NA
CIRCLING	1540-1 742 (800-1)	1540-1 1/4 742 (800-1 1/4)	1540-2 1/4 742 (800-2 1/4)	NA



SE-2, 09 SEP 2021 to 07 OCT 2021

SE-2, 09 SEP 2021 to 07 OCT 2021

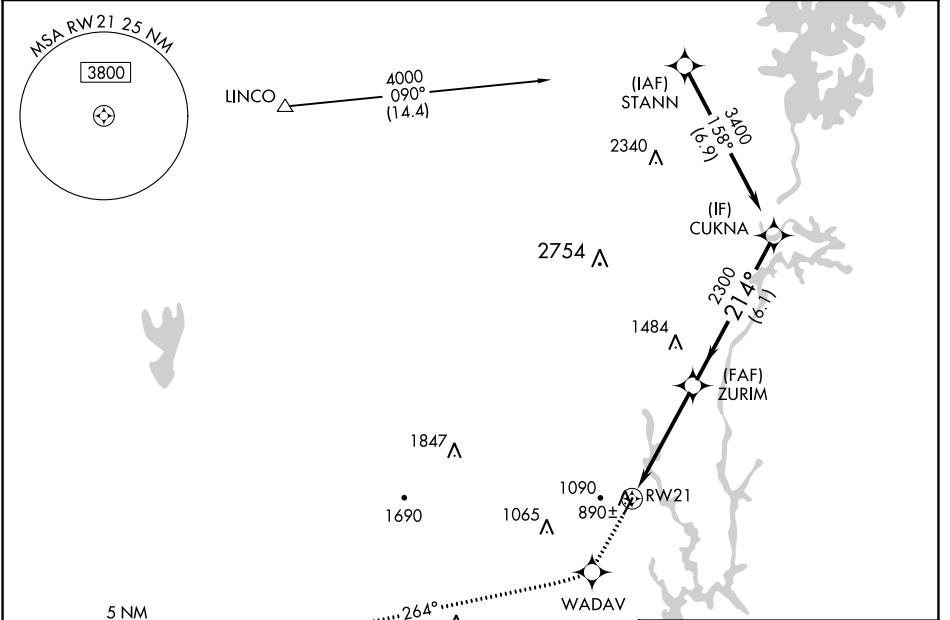
WAAS CH 50402 W21A	APP CRS 214°	Rwy Idg TDZE Apt Elev	3689 798 798
--	------------------------	-----------------------------	---

RNAV (GPS) RWY 21

GASTONIA MUNI (AKH)

RNP APCH.		MISSED APPROACH: Climb to 3200 direct WADAV and via 264° track to GAFFE and hold.	
<p>▽ If local altimeter setting not received, use Charlotte/Douglas Intl altimeter setting and increase all DA/MDAs 40 feet. Rwy 21 helicopter visibility reduction below ¾ SM NA.</p>			

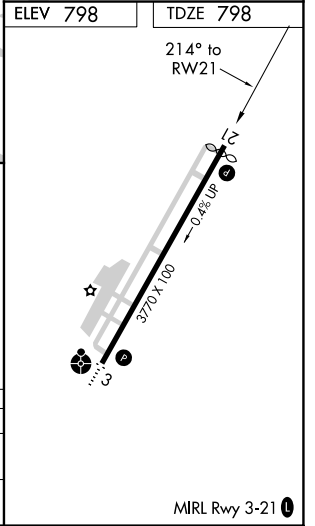
ASOS 135.725	CHARLOTTE APP CON 120.05 257.2	CLNC DEL 127.2	UNICOM 123.0 (CTAF) 0
------------------------	--	--------------------------	---------------------------------



ELEV 798	TDZE 798
<p>214° to RWY 21</p> <p>3270 X 100</p> <p>0.4% UP</p>	

3200	WADAV	GAFFE	VGSI and RNAV glidepath not coincident (VGSI Angle 3.00/TCH 38).
↑	☆	△	
tr 264°			
RWY 21		ZURIM	CUKNA
4.6 NM		2300	3400
6.1 NM		214°	Procedure Turn NA
			GP 3.00°
			TCH 40

CATEGORY	A	B	C	D
LPV DA	1111-1¼	313 (400-1¼)		NA
LNAV MDA	1420-1	622 (700-1)	1420-1¾ 622 (700-1¾)	NA



SE-2, 09 SEP 2021 to 07 OCT 2021

SE-2, 09 SEP 2021 to 07 OCT 2021

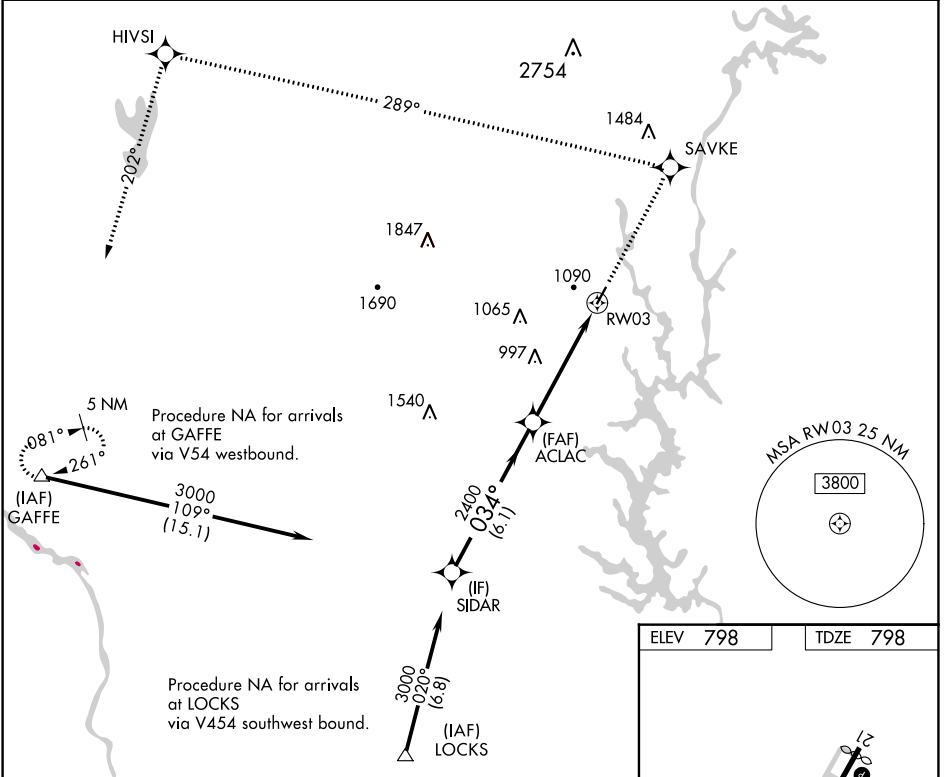
WAAS CH 90302 W03A	APP CRS 034°	Rwy Idg TDZE Apt Elev	3770 798 798
--	------------------------	-----------------------------	---

RNAV (GPS) RWY 3

GASTONIA MUNI (AKH)

RNP APCH. ▼ If local altimeter setting not received, use Charlotte Douglas Intl altimeter setting and increase all DAs/MDAs 40 feet. Inoperative table does not apply.	ODALS ☉ ⋮	MISSED APPROACH: Climb to 3200 direct SAVKE and via 289° track to HIVSI and 202° track to GAFFE and hold.
---	--------------	---

ASOS 135.725	CHARLOTTE APP CON 120.05 257.2	CLNC DEL 127.2	UNICOM 123.0 (CTAF) 0
------------------------	--	--------------------------	---------------------------------



SE-2, 09 SEP 2021 to 07 OCT 2021

SE-2, 09 SEP 2021 to 07 OCT 2021

VGSi and RNAV glidepath not coincident (VGSi Angle 3.00/TCH 26).		3200 SAVKE	HIVSI	GAFFE
Procedure Turn NA		↑	tr 289°	tr 202°
GP 3.00° TCH 40		3000 SIDAR	2400 (IF) SIDAR	ACLAC
		3000 (IAF) LOCKS	2400 (FAF) ACLAC	RW03
		6.1 NM	4.8 NM	
CATEGORY	A	B	C	D
LPV DA	1118-1¼	320 (400-1¼)		NA
LNAV MDA	1440-1	642 (700-1)	1440-1¾ 642 (700-1¾)	NA

