

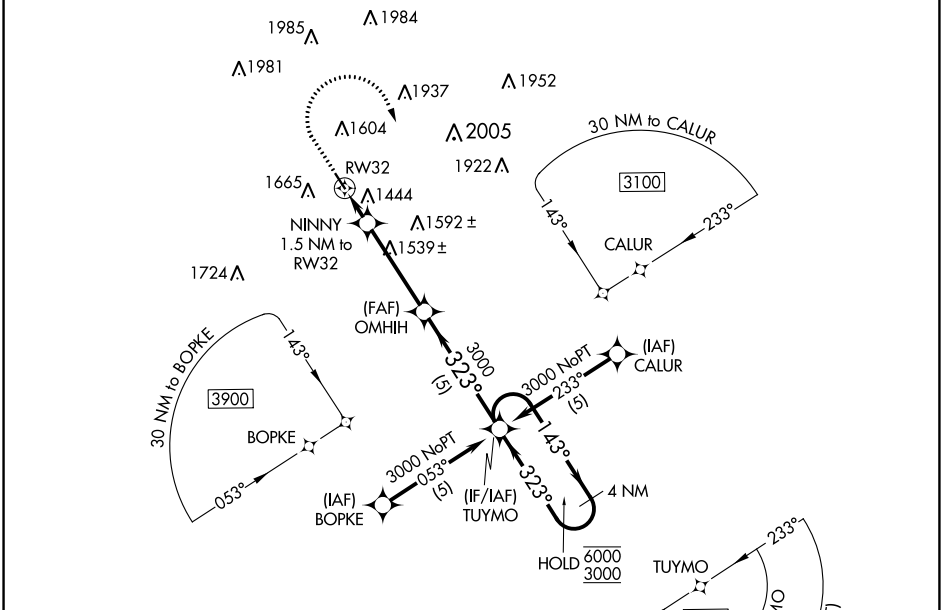
APP CRS	Rwy Idg	3641
323°	TDZE	1286
	Apt Elev	1288

RNAV (GPS) RWY 32

AUDUBON COUNTY (ADU)

RNP APCH.	MISSED APPROACH: Climb to 2500 then climbing right turn to 3000 direct TUYMO and hold.
<p>▼ Circling Rwy 14 NA at night.</p> <p>▲ Rwy 32 helicopter visibility reduction below 3/4 SM NA. When local altimeter setting not received, procedure NA.</p>	

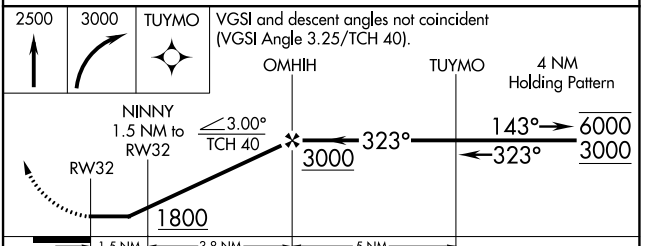
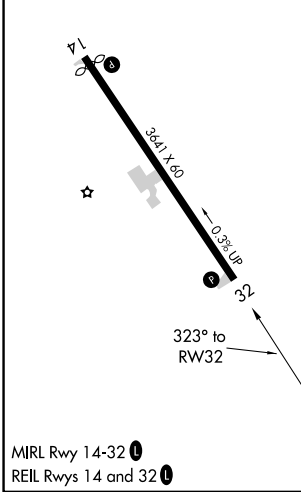
AWOS-3 118.075	MINNEAPOLIS CENTER 119.6 290.4	UNICOM 122.8 (CTAF) ①
--------------------------	--	---------------------------------



NC-3, 22 FEB 2024 to 21 MAR 2024

NC-3, 22 FEB 2024 to 21 MAR 2024

ELEV 1288	TDZE 1286
-----------	-----------



CATEGORY	A	B	C	D
LNAV MDA	1760-1	474 (500-1)	NA	
CIRCLING	1980-1	692 (700-1)	NA	