

APP CRS	Rwy Idg	5000
177°	TDZE	105
	Apt Elev	107

RNAV (GPS) RWY 18

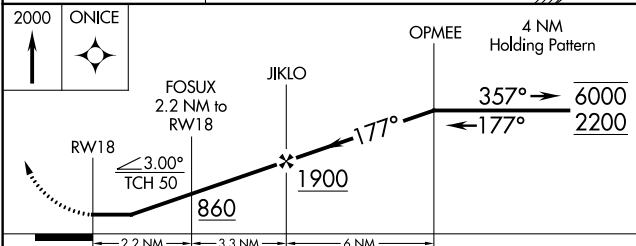
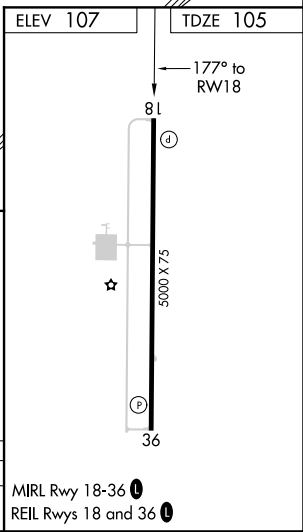
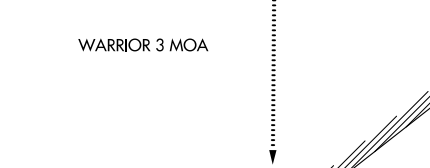
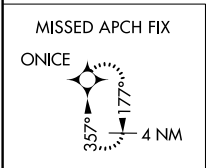
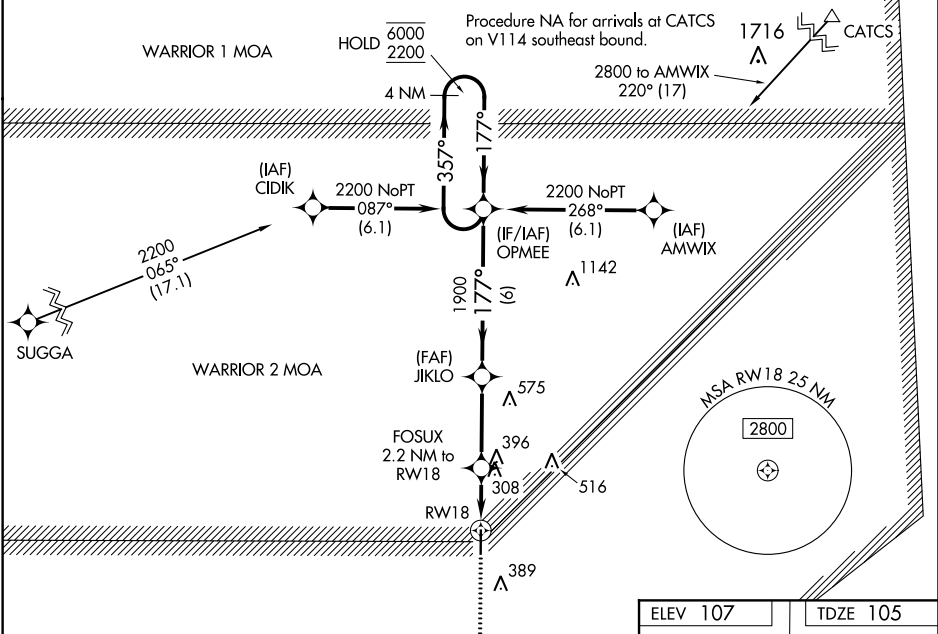
ALLEN PARISH (ACP)

RNP APCH - GPS.

▼ Procedure NA at night. Rwy 18 helicopter visibility reduction below 1 SM NA.
▲ When local altimeter setting not received, use Alexandria Intl altimeter setting; increase all MDAs 100 feet and visibility LNAV Cat C ¼ SM.

MISSED APPROACH: Climb to 2000 direct ONICE and hold.

AWOS-3PT 118.275	POLK APP CON 123.7 261.3	GCO 135.075	UNICOM 122.8 (CTAF) ①
----------------------------	------------------------------------	-----------------------	---------------------------------



CATEGORY	A	B	C	D
LNAV MDA	560-1	455 (500-1)	560-1 3/8 455 (500-1 3/8)	NA

SC-4, 19 MAY 2022 to 16 JUN 2022

SC-4, 19 MAY 2022 to 16 JUN 2022

APP CRS	Rwy Idg	5000
357°	TDZE	107
	Apt Elev	107

RNAV (GPS) RWY 36

ALLEN PARISH (ACP)

RNP APCH - GPS.

▼ Procedure NA at night. Rwy 36 helicopter visibility reduction below 1 SM NA.
 ▲ When local altimeter setting not received, use Alexandria Intl altimeter setting: increase all MDAs 100 feet and visibility LNAV Cat C ¼ SM and Circling Cat C ½ SM.

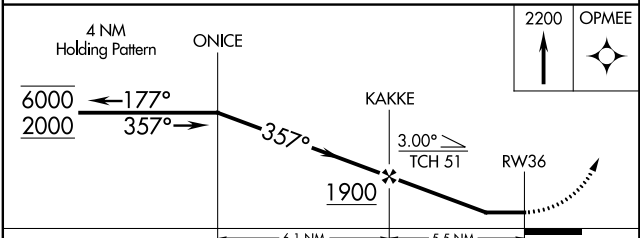
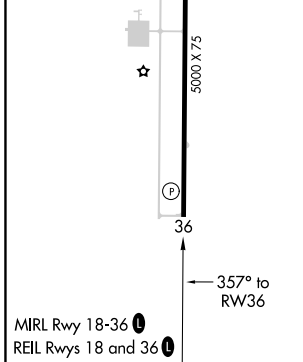
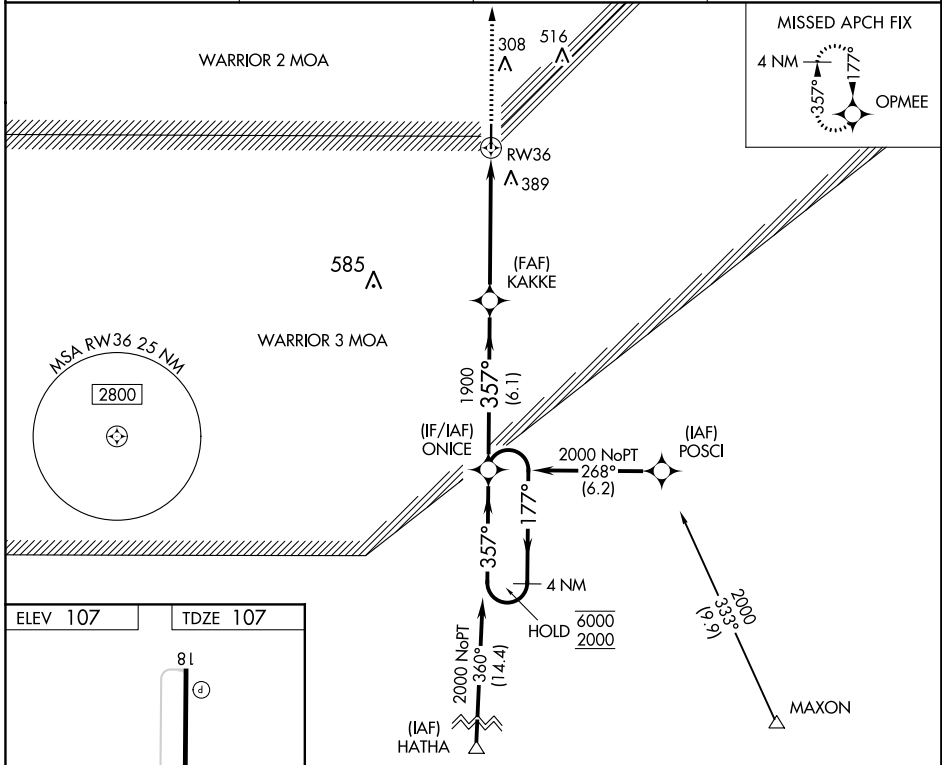
MISSED APPROACH: Climb to 2200 direct OPMEE and hold.

AWOS-3PT
118.275

POLK APP CON
123.7 261.3

GCO
135.075

UNICOM
122.8 (CTAF)



CATEGORY	A	B	C	D
LNAV MDA	540-1	433 (500-1)	540-1¼ 433 (500-1¼)	NA
CIRCLING	560-1 453 (500-1)	700-1 593 (600-1)	760-1¾ 653 (700-1¾)	NA

SC-4, 19 MAY 2022 to 16 JUN 2022

SC-4, 19 MAY 2022 to 16 JUN 2022