

WAAS CH 63134 W21A	APP CRS 215°	Rwy Idg TDZE 941 Apt Elev 943	3398
--	------------------------	---	-------------

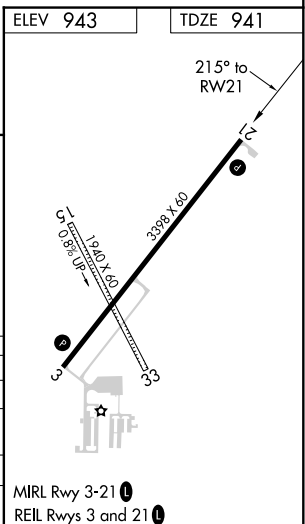
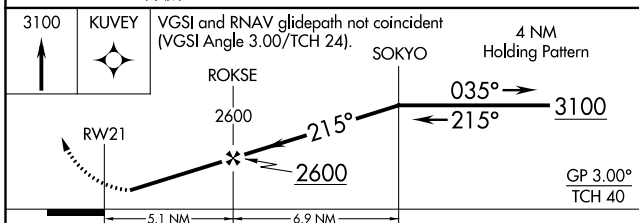
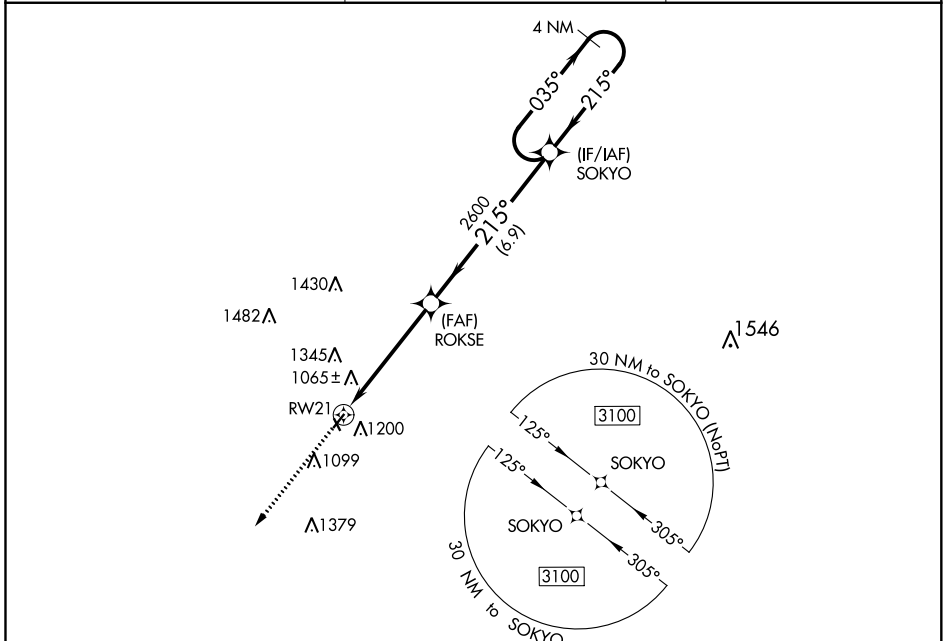
RNAV (GPS) RWY 21

MIAMI COUNTY (K81)

NA Baro-VNAV NA. DME/DME RNP-0.3 NA. Use New Century Aircenter altimeter setting; when not received, use Johnson County Exec altimeter setting and increase all DA 8 feet and all MDA 20 feet; increase LPV and LNAV/VNAV all Cats visibility 1/8 mile. Helicopter visibility reduction below 3/4 SM NA.

MISSED APPROACH: Climb to 3100 direct KUYEY and hold.

IDX ASOS 135.325	KANSAS CITY APP CON 118.9 251.075	UNICOM 122.8 (CTAF) 0
----------------------------	---	---------------------------------



CATEGORY	A	B	C	D
LPV DA	1252-1	311 (400-1)		NA
LNAV/VNAV DA	1429-1 1/8	488 (500-1 1/8)		NA
LNAV MDA	1520-1	579 (600-1)		NA
C CIRCLING	1580-1	637 (700-1)		NA

NC-2, 02 DEC 2021 to 30 DEC 2021

NC-2, 02 DEC 2021 to 30 DEC 2021

WAAS CH 49134 W03A	APP CRS 035°	Rwy Idg 3398 TDZE 941 Apt Elev 943
--	------------------------	---

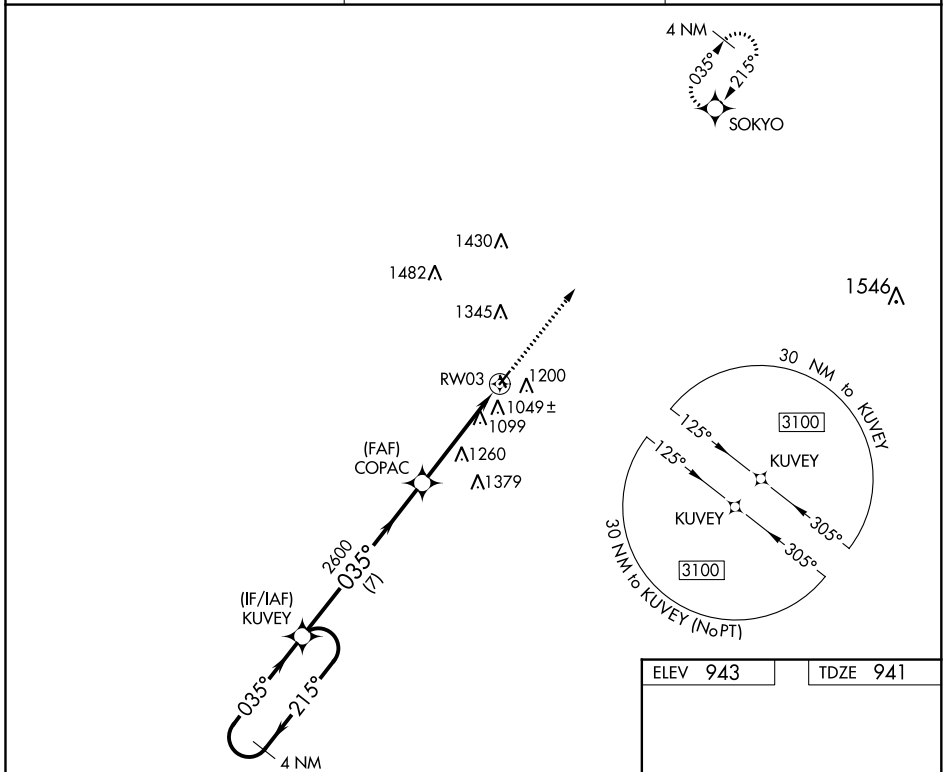
RNAV (GPS) RWY 3

MIAMI COUNTY (K81)

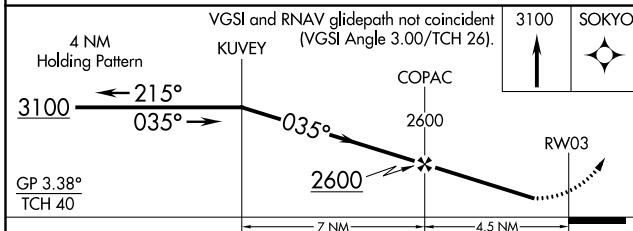
⚠ NA Baro-VNAV NA. DME/DME RNP-0.3 NA. Use New Century Aircenter altimeter setting; when not received, use Johnson County Exec altimeter setting and increase all DA 8 feet and all MDA 20 feet. Helicopter visibility reduction below 3/4 SM NA.

MISSED APPROACH: Climb to 3100 direct SOKYO and hold.

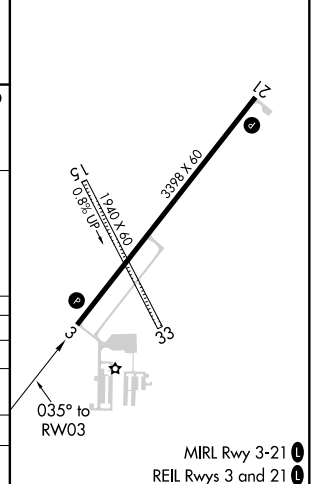
IXD ASOS 135.325	KANSAS CITY APP CON 118.9 251.075	UNICOM 122.8 (CTAF) 0
----------------------------	---	---------------------------------



ELEV 943	TDZE 941
-----------------	-----------------



CATEGORY	A	B	C	D
LPV DA	1284-1	343 (400-1)		NA
LNAV/VNAV DA	1274-1	333 (400-1)		NA
LNAV MDA	1640-1	699 (700-1)		NA
C CIRCLING	1640-1	697 (700-1)		NA



MIRM Rwy 3-21 **0**
REIL Rwy 3 and 21 **0**

NC-2, 02 DEC 2021 to 30 DEC 2021

NC-2, 02 DEC 2021 to 30 DEC 2021