

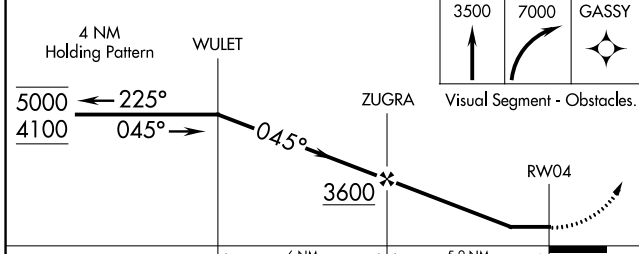
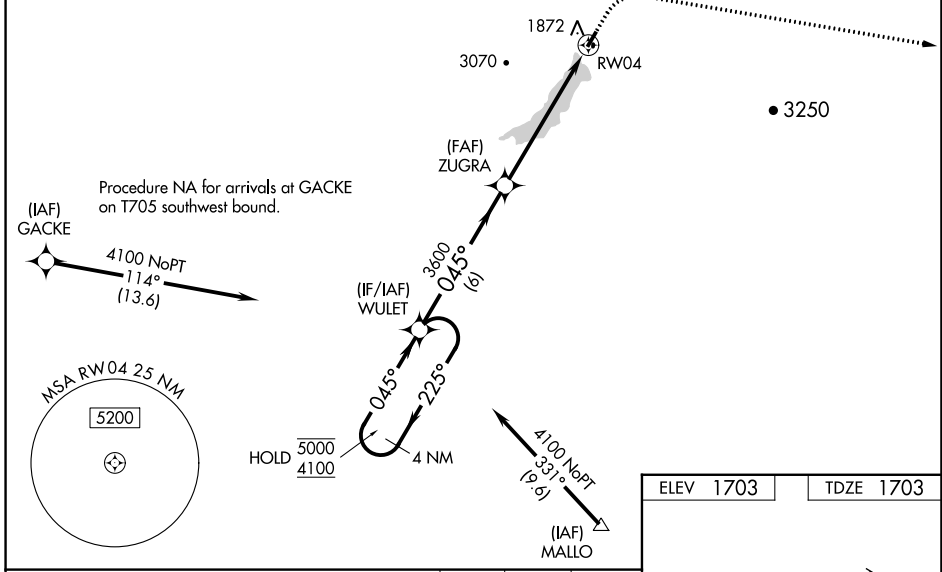
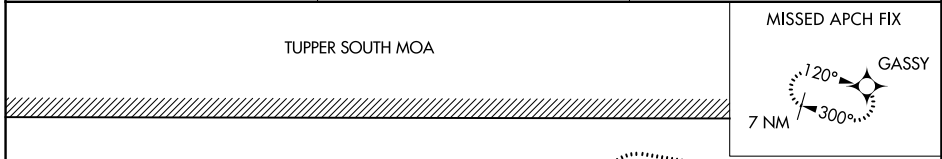
WAAS CH 86328 W04A	APP CRS 045°	Rwy Idg TDZE 1703 Apt Elev 1703	3016 1703 1703
--	------------------------	---	---

RNAV (GPS) RWY 4

PISECO (K09)

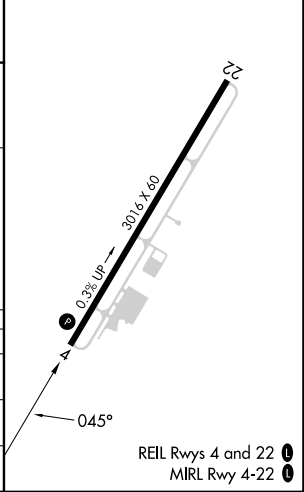
RNP APCH - GPS.	Procedure NA at night. Rwy 4 helicopter visibility reduction below 1 SM NA. Use Griffiss Intl altimeter setting. Circling NA west of Rwy 4-22. Circling NA for Cat C.	MISSED APPROACH: Climb to 3500 then climbing right turn to 7000 direct GASSY and hold.
-----------------	---	--

RME ASOS 118.7	BOSTON CENTER 135.25 377.1	UNICOM 122.8 (CTAF) 0
--------------------------	--------------------------------------	---------------------------------



ELEV 1703	TDZE 1703
-----------	-----------

CATEGORY	A	B	C	D
LP MDA	2680-1¼ 977 (1000-1¼)	2680-1½ 977 (1000-1½)	2680-3 977 (1000-3)	NA
LNAV MDA	3400-1¼ 1697 (1700-1¼)	3400-1½ 1697 (1700-1½)	3400-3 1697 (1700-3)	NA
CIRCLING	3400-1¼ 1697 (1700-1¼)	3400-1½ 1697 (1700-1½)	3520-3 1817 (1900-3)	NA



NE-2, 22 FEB 2024 to 21 MAR 2024

NE-2, 22 FEB 2024 to 21 MAR 2024

RNAV (GPS) RWY 4