

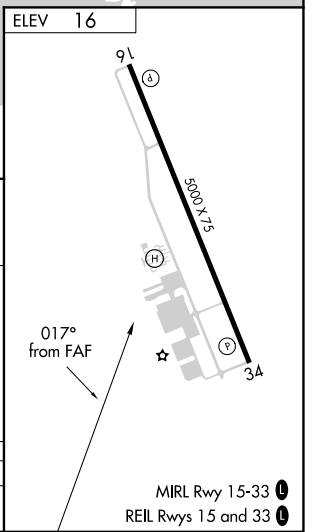
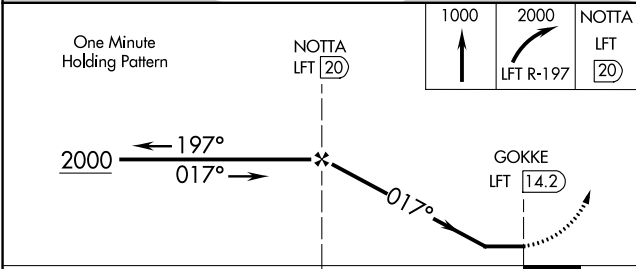
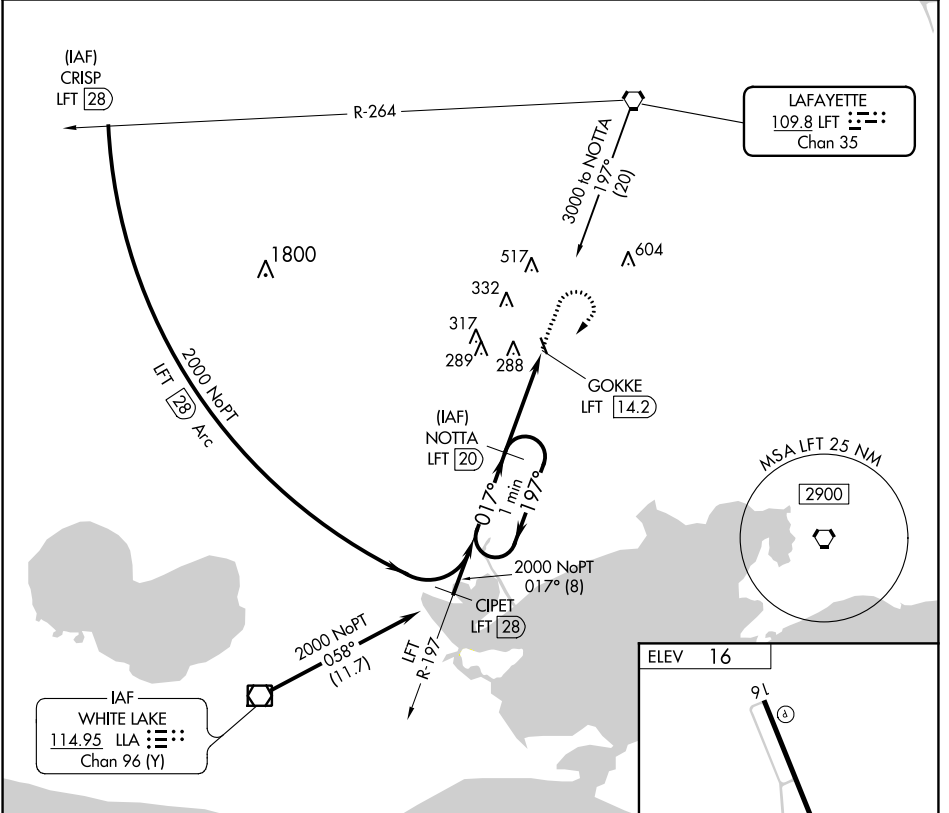
VORTAC LFT <b>109.8</b> Chan <b>35</b>	APP CRS <b>017°</b>	Rwy Idg TDZE Apt Elev <b>N/A</b> <b>N/A</b> <b>16</b>
--	------------------------	--

# VOR/DME-B

ABBEVILLE CHRIS CRUSTA MEML (1YA)

<b>▽</b> <b>▲ NA</b>	When local altimeter setting not received, use New Iberia altimeter setting and increase all MDA 40 feet.	MISSED APPROACH: Climb to 1000, then climbing right turn to 2000 via LFT R-197 to NOTTA/LFT 20 DME and hold.
-------------------------	---	--

AWOS-3 <b>118.875</b>	LAFAYETTE APP CON * <b>121.1 268.7</b>	GCO <b>135.075</b>	UNICOM <b>122.8</b> (CTAF) <b>0</b>
--------------------------	---	-----------------------	--



CATEGORY	A	B	C	D
<b>C</b> CIRCLING	600-1	584 (600-1)	700-2 684 (700-2)	NA

SC-4, 22 FEB 2024 to 21 MAR 2024

SC-4, 22 FEB 2024 to 21 MAR 2024