

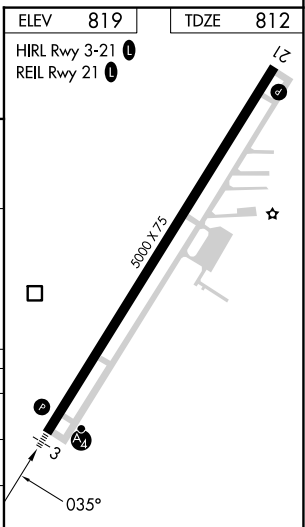
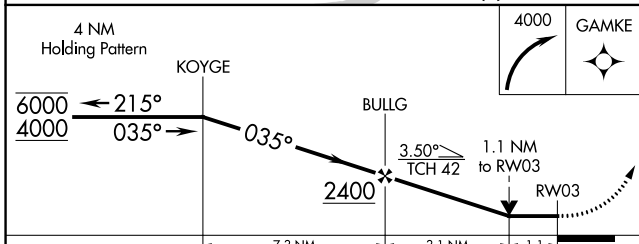
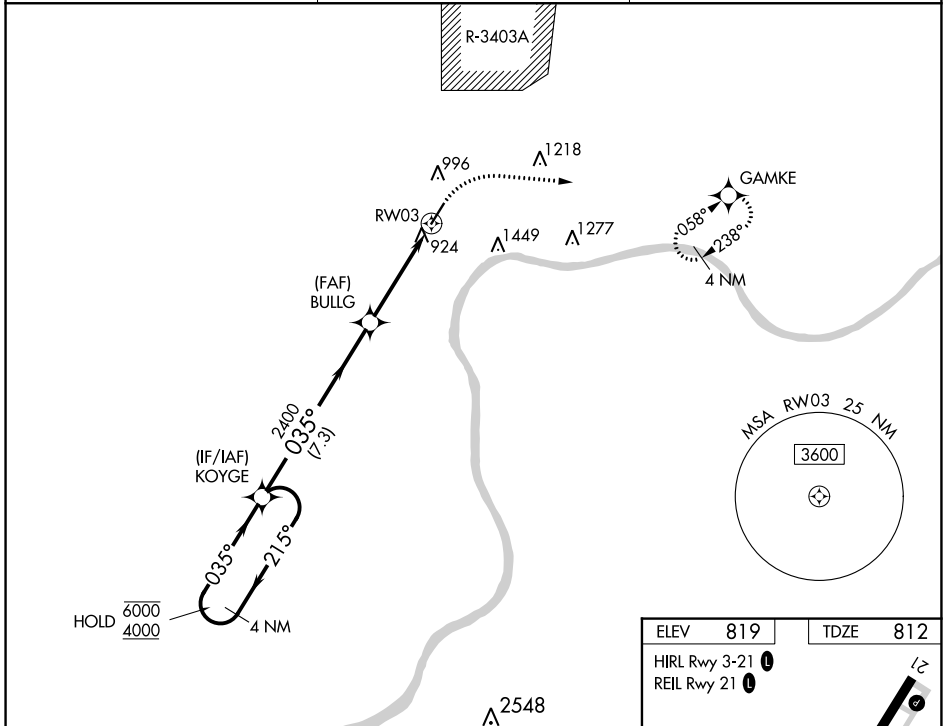
| | | |
|-------------|----------|-------------|
| APP CRS | Rwy ldg | 5000 |
| 035° | TDZE | 812 |
| | Apt Elev | 819 |

RNAV (GPS) Y RWY 3

MADISON MUNI (IMS)

| | | |
|--|-------|---|
| RNP APCH - GPS. | MALSF | MISSED APPROACH: Climbing right turn to 4000 direct GAMKE and hold, continue climb-in-hold to 4000. **Missed approach requires minimum climb of 410 feet per NM to 1900. |
| <p>⚠ Circling NA for Cat C east of Rwy 3-21. Rwy 3 helicopter visibility reduction below 3/4 SM NA. For inop ALS increase **LNAV Cat C visibility to 1 3/8 SM.</p> | | |

| | | |
|--------------------------|--|---------------------------------|
| AWOS-3 119.175 | LOUISVILLE APP CON 132.075 327.0 | UNICOM 123.0 (CTAF) 1 |
|--------------------------|--|---------------------------------|



| CATEGORY | A | B | C | D |
|------------|----------|---------------|-------------------------------|----|
| LNAV MDA** | 1260-3/4 | 448 (500-3/4) | 1260-1 448 (500-1) | NA |
| LNAV MDA | 1420-3/4 | 608 (700-3/4) | 1420-1 1/2 608 (700-1 1/2) | NA |
| CIRCLING | 1420-1 | 601 (700-1) | 1420-1 3/4 601 (700-1 3/4) | NA |