

WAAS CH 82227 W22A	APP CRS 221°	Rwy Idg TDZE Apt Elev	3566 839 843
--	------------------------	-----------------------------	---

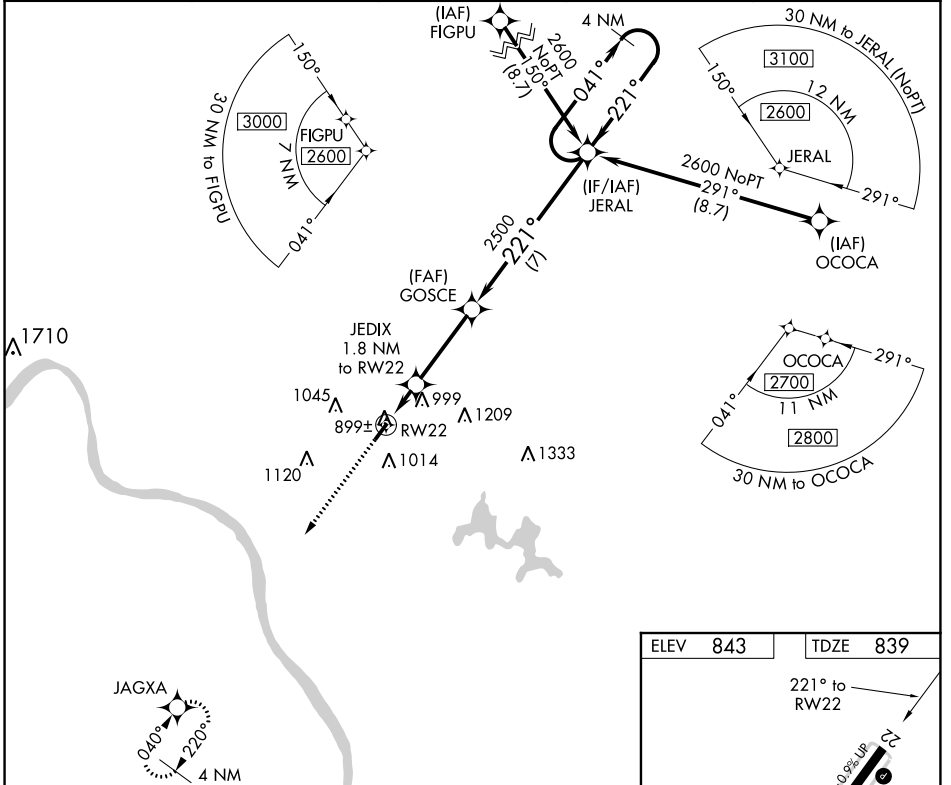
RNAV (GPS) RWY 22

CLERMONT COUNTY (I69)

⚠ Night Landing: Rwy 22 operational VGSi required, remain on or above VGSi glidepath until threshold. Circling NA at night. Rwy 4/22 helicopter visibility reduction below 1 SM NA. DME/DME RNP-0.3 NA. When local altimeter setting not received, use Cincinnati Muni Airport Lunken Field altimeter setting and increase all MDA 80 feet; LP and LNAV Cat C visibility 1½ SM, Circling Cat C visibility 2¼ SM.

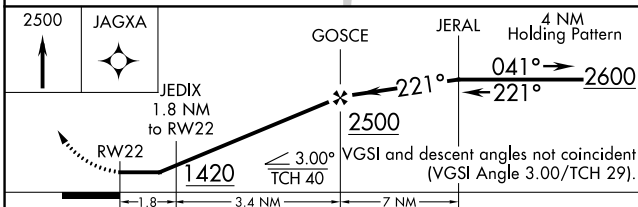
MISSED APPROACH: Climb to 2500 direct JAGXA and hold.

AWOS-3 127.275	CINCINNATI APP CON 121.0 254.25	CLNC DEL 124.9	UNICOM 122.975 (CTAF) 0
--------------------------	---	--------------------------	-----------------------------------



EC-2, 28 JAN 2021 to 25 FEB 2021

EC-2, 28 JAN 2021 to 25 FEB 2021



ELEV 843	TDZE 839
----------	----------

MIRL Rwy 4-22 0
REIL Rws 4 and 22 0

CATEGORY	A	B	C	D
LP MDA	1200-1 361 (400-1)	1200-1½ 361 (400-1½)	1200-1½ 361 (400-1½)	NA
LNAV MDA	1280-1 441 (500-1)	1280-1¾ 441 (500-1¾)	1280-1¾ 441 (500-1¾)	NA
C CIRCLING	1360-1 517 (600-1)	1520-2 677 (700-2)	1520-2 677 (700-2)	NA

WAAS CH 58327 W04A	APP CRS 040°	Rwy Idg 3170 TDZE 840 Apt Elev 843
--	------------------------	---

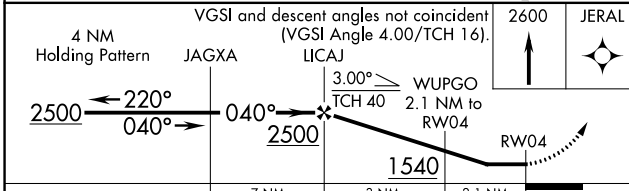
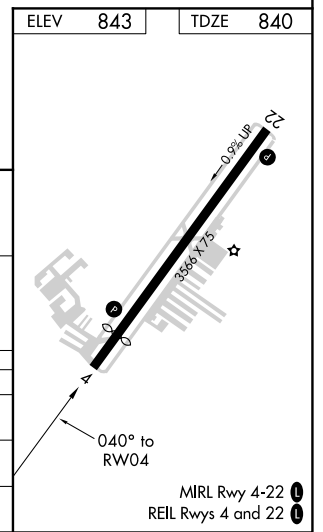
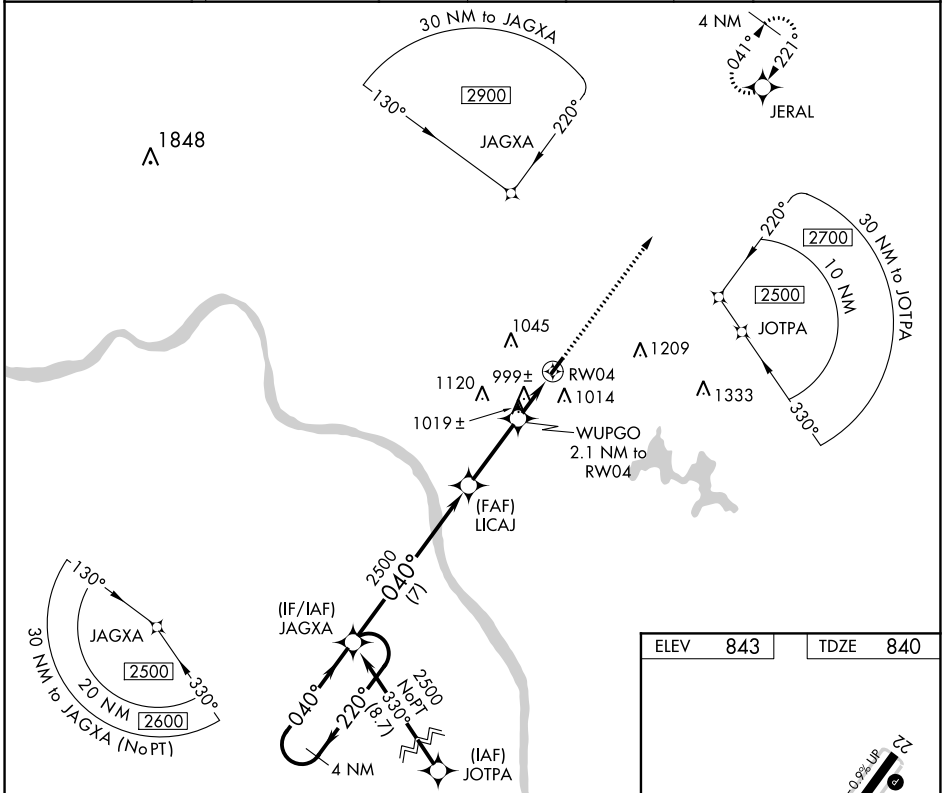
RNAV (GPS) RWY 4

CLERMONT COUNTY (I69)

⚠ Circling NA at night. Rwy 4/22 helicopter visibility reduction below 1 SM NA.
⚠ DME/DME RNP-0.3 NA. When local altimeter setting not received, use Cincinnati Muni Airport Lunken Field altimeter setting and increase all MDA 80 feet and all Cat C visibilities ¼ SM.

MISSED APPROACH: Climb to 2600 direct JERAL and hold.

AWOS-3 127.275	CINCINNATI APP CON 121.0 254.25	CLNC DEL 124.9	UNICOM 122.975 (CTAF) 0
--------------------------	---	--------------------------	-----------------------------------



CATEGORY	A	B	C	D
LP MDA	1300-1	460 (500-1)	1300-1½ 460 (500-1½)	NA
LNAV MDA	1320-1	480 (500-1)	1320-1½ 480 (500-1½)	NA
C CIRCLING	1360-1	517 (600-1)	1520-2 677 (700-2)	NA

EC-2, 28 JAN 2021 to 25 FEB 2021

EC-2, 28 JAN 2021 to 25 FEB 2021

BATAVIA, OHIO

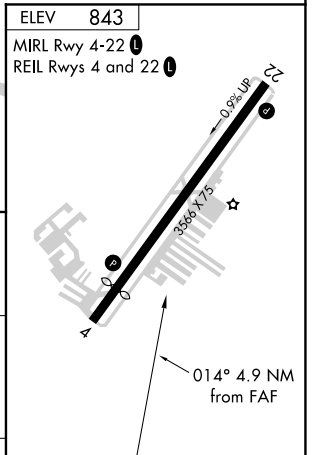
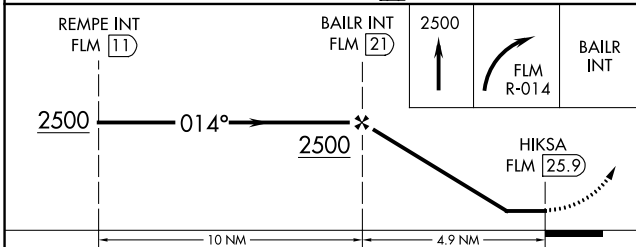
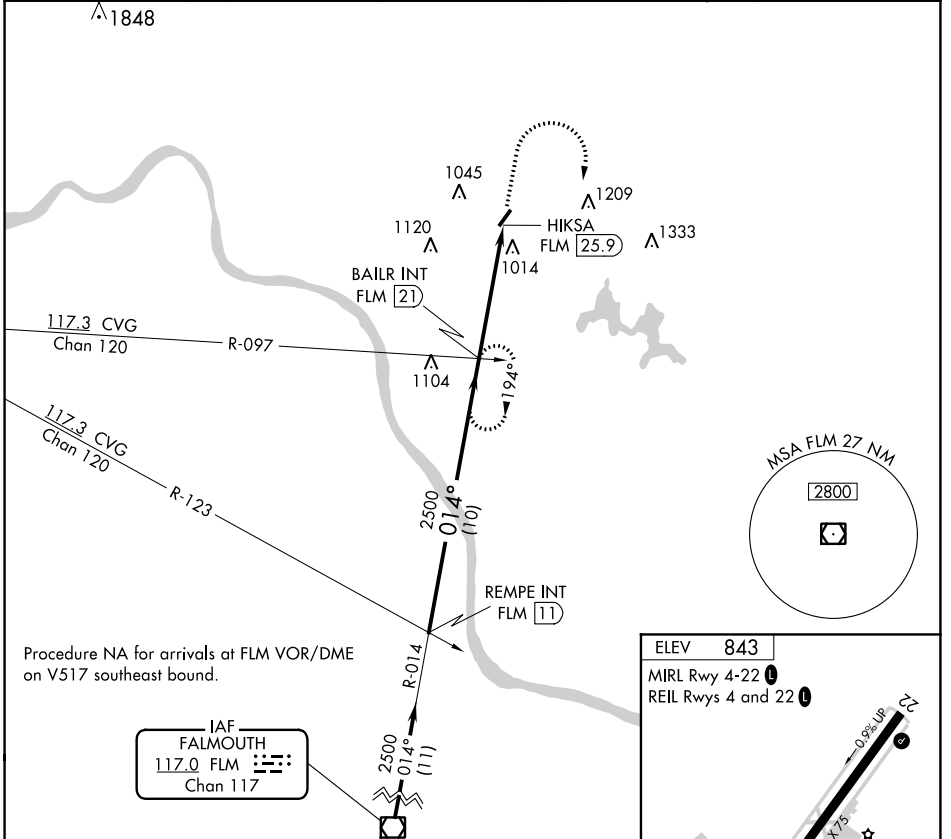
AL-5955 (FAA)

20254

VOR/DME FLM 117.0 Chan 117	APP CRS 014°	Rwy Idg TDZE Apt Elev	N/A N/A 843
--	------------------------	-----------------------------	--

VOR-B
CLERMONT COUNTY (I69)

<p>⚠ Rwy 4/22 helicopter visibility reduction below 1 SM NA. Procedure NA at night. When local altimeter setting not received, use Cincinnati Muni Airport Lunken Field altimeter setting and increase all MDAs 80 feet and visibility Cat C ¼ SM.</p>		<p>MISSED APPROACH: Climb to 2500 then right turn via FLM VOR/DME R-014 to BAILR INT/21 DME and hold.</p>	
AWOS-3 127.275	CINCINNATI APP CON 121.0 254.25	CLINC DEL 124.9	UNICOM 122.975 (CTAF) 0



CATEGORY	A	B	C	D	FAF to MAP 4.9 NM					
	1420-1 577 (600-1)	1420-1¼ 577 (600-1¼)	1520-2 677 (700-2)	NA	Knots	60	90	120	150	180
Ⓢ CIRCLING					Min:Sec	4:54	3:16	2:27	1:58	1:38

BATAVIA, OHIO
Amdt 7C 22JUN17

39°05'N-84°13'W

CLERMONT COUNTY (I69)
VOR-B

EC-2, 28 JAN 2021 to 25 FEB 2021

EC-2, 28 JAN 2021 to 25 FEB 2021