

APP CRS	Rwy Idg	2589
185°	TDZE	584
	Apt Elev	584

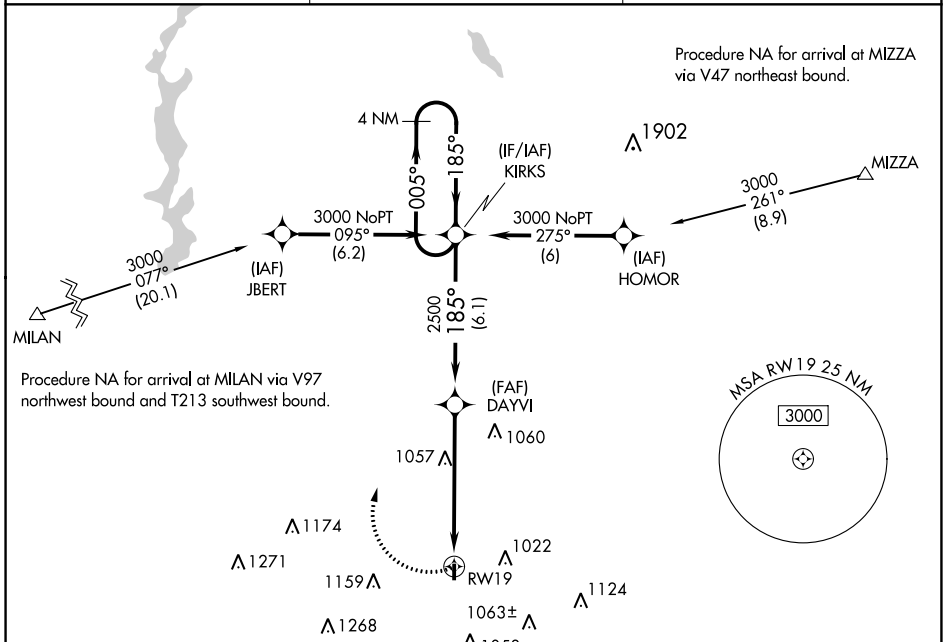
RNAV (GPS) RWY 19

CINCINNATI WEST (I67)

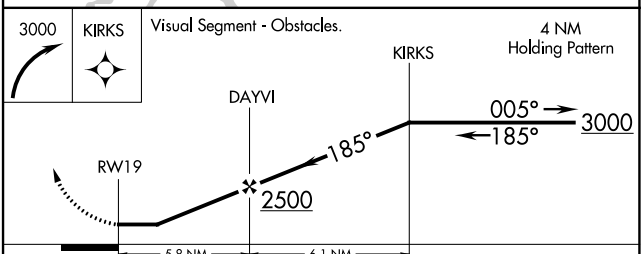
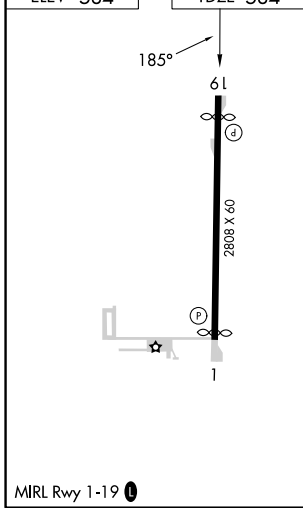
⚠ DME/DME RNP-0.3 NA. Rwy 1, 19 helicopter visibility reduction below 1 SM NA.
⚠ NA Use Butler Co Rgnl-Hogan Field altimeter setting, when not received, use Cincinnati/Northern Kentucky Intl altimeter setting and increase all MDA 40 feet. Procedure NA at night.

MISSED APPROACH:
 Climbing right turn 3000 direct KIRKS and hold.

AWOS-3PT 118.15	CINCINNATI APP CON 128.7 254.25	UNICOM 123.0 (CTAF)
---------------------------	---	-------------------------------



ELEV 584	TDZE 584
----------	----------



CATEGORY	A	B	C	D
LNAV MDA	1380-1 796 (800-1)	1380-1¼ 796 (800-1¼)	NA	
CIRCLING	1380-1 796 (800-1)	1380-1¼ 796 (800-1¼)	NA	

EC-2, 07 SEP 2023 to 05 OCT 2023

EC-2, 07 SEP 2023 to 05 OCT 2023

VORTAC CVG 117.3 Chan 120	APP CRS 171°	Rwy Idg TDZE Apt Elev	2589 584 584
---	------------------------	-----------------------------	---

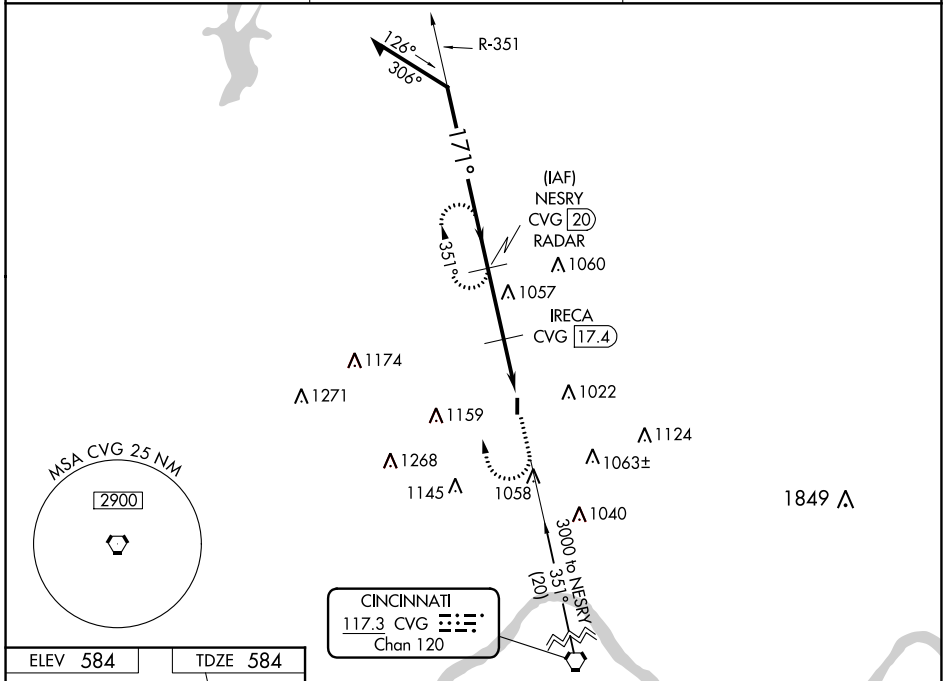
VOR RWY 19

CINCINNATI WEST (I67)

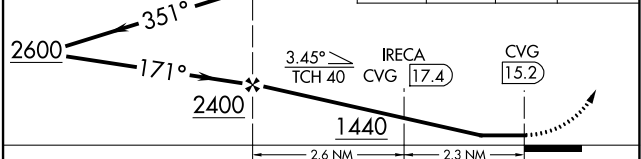
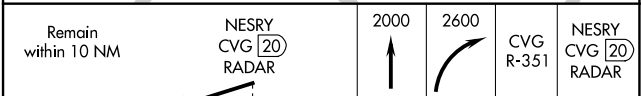
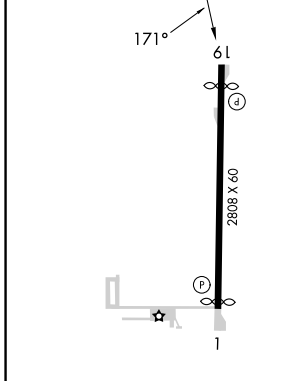
⚠ DME or RADAR required. Use Butler Co Rgnl-Hogan Field altimeter setting, when not received, use Cincinnati/Northern Kentucky Intl altimeter setting and increase all MDA 40 feet, and S-19 Cat A visibility ¼ mile. Procedure NA at night. Rwy 1, 19 helicopter visibility reduction below 1 SM NA.

MISSED APPROACH: Climb to 2000, then climbing right turn to 2600 via CVG VORTAC R-351 to NESRY/ CVG 20 DME/RADAR and hold.

AWOS-3PT 118.15	CINCINNATI APP CON 128.7 254.25	UNICOM 123.0 (CTAF) 0
---------------------------	---	---------------------------------



ELEV 584	TDZE 584
----------	----------



CATEGORY	A	B	C	D
S-19	1440-1 856 (900-1)	1440-1¼ 856 (900-1¼)		NA
CIRCLING	1440-1 856 (900-1)	1440-1¼ 856 (900-1¼)		NA
IRECA FIX MINIMUMS				
S-19	1340-1 756 (800-1)	1340-1¼ 756 (800-1¼)		NA
CIRCLING	1340-1 756 (800-1)	1340-1¼ 756 (800-1¼)		NA

MIRL Rwy 1-19 0

FAF to MAP 4.9 NM

Knots	60	90	120	150	180
Min:Sec	4:54	3:16	2:27	1:58	1:38

EC-2, 07 SEP 2023 to 05 OCT 2023

EC-2, 07 SEP 2023 to 05 OCT 2023