

WAAS CH 97640 W01A	APP CRS 010°	Rwy Idg TDZE Apt Elev	5000 822 822
--	------------------------	-----------------------------	---

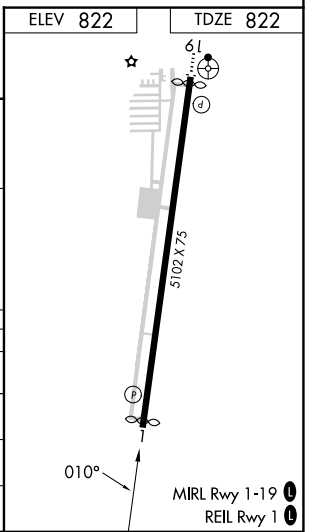
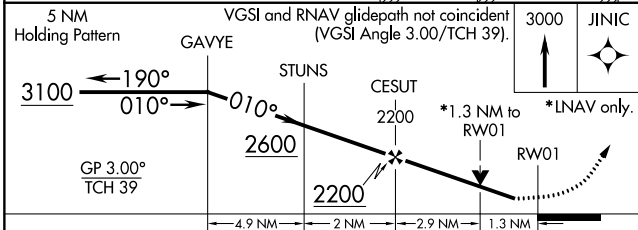
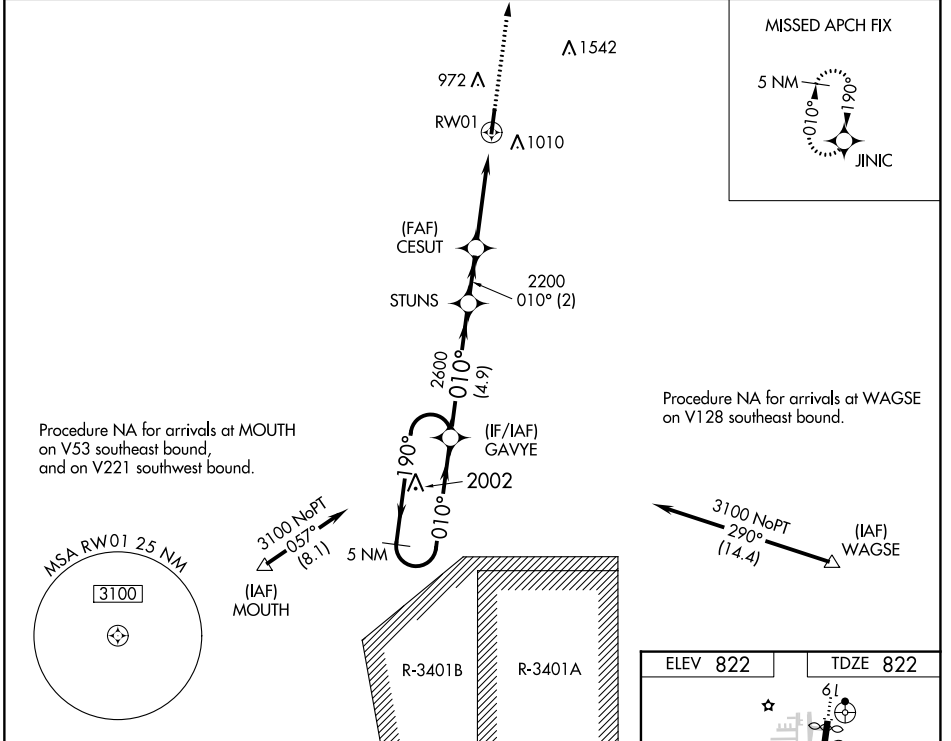
RNAV (GPS) RWY 1

INDY SOUTH GREENWOOD (HF'Y)

⚠ For uncompensated Baro-VNAV systems, LNAV/VNAV NA below -16°C (4°F) or above 54°C (130°F). Rwy 1 helicopter visibility reduction below ¾ SM NA. DME/DME RNP-0.3 NA.

MISSED APPROACH: Climb to 3000 direct JINIC and hold.

AWOS-3P 118.525	INDIANAPOLIS APP CON 124.95 317.8	GCO 121.725	UNICOM 123.0 (CTAF)
---------------------------	---	-----------------------	-------------------------------



CATEGORY	A	B	C	D
LPV DA		1167-1½	345 (400-1½)	
LNAV/ VNAV DA		1152-1½	330 (400-1½)	
LNAV MDA	1280-1	458 (500-1)	1280-1¾	458 (500-1¾)
C CIRCLING	1320-1 498 (500-1)	1380-1 558 (600-1)	1380-1½ 558 (600-1½)	1900-3 1078 (1100-3)

EC-2, 22 FEB 2024 to 21 MAR 2024

EC-2, 22 FEB 2024 to 21 MAR 2024