

APP CRS **091°**
 Rwy Idg **4504**
 TDZE **451**
 Apt Elev **481**

RNAV (GPS) RWY 9

CLARKSVILLE MUNI (H35)

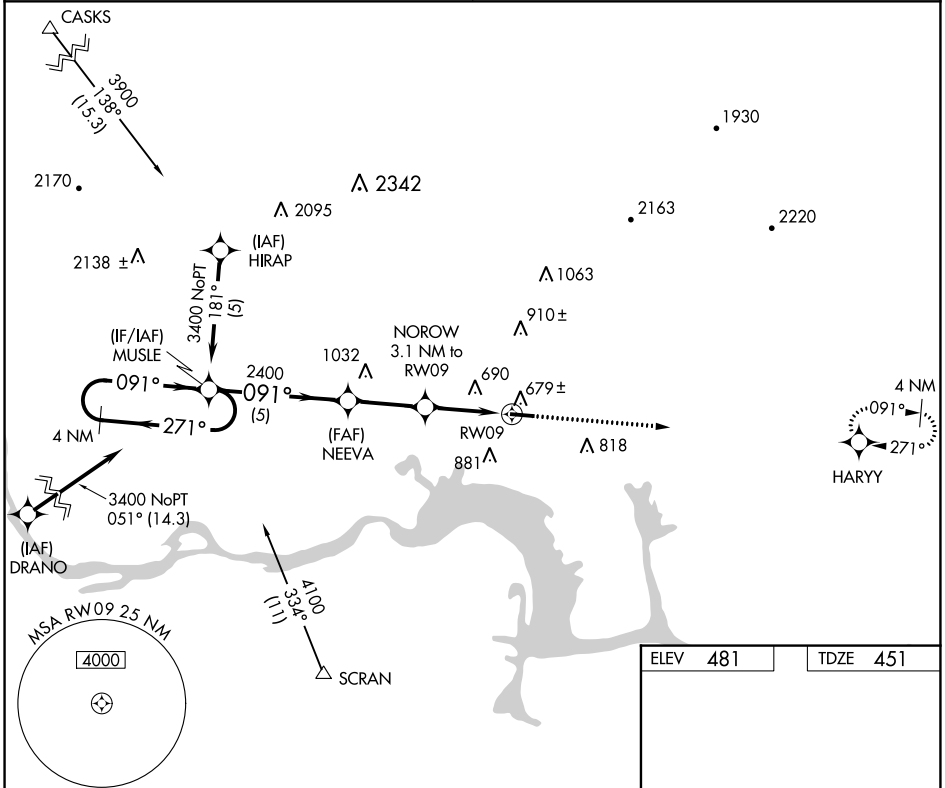
RNP APCH.

▼ Use Russellville Rgnl altimeter setting; If not received, use Fort Smith Rgnl altimeter setting and increase all MDAs 60 feet. Procedure NA at night.
▲ NA Rwy 9 helicopter visibility reduction below 1 SM NA.

MISSED APPROACH: Climb to 3100 direct HARRY WP and hold.

MEMPHIS CENTER
128.475 377.15

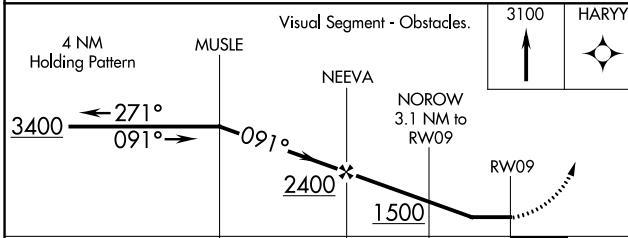
UNICOM
122.8 (CTAF)



SC-1, 22 FEB 2024 to 21 MAR 2024

SC-1, 22 FEB 2024 to 21 MAR 2024

ELEV **481** TDZE **451**



CATEGORY	A	B	C	D
LNVA MDA	1060-1 609 (600-1)			
CIRCLING	1220-1 739 (800-1)	1240-1¼ 759 (800-1¼)	NA	

MIRL Rwy 9-27