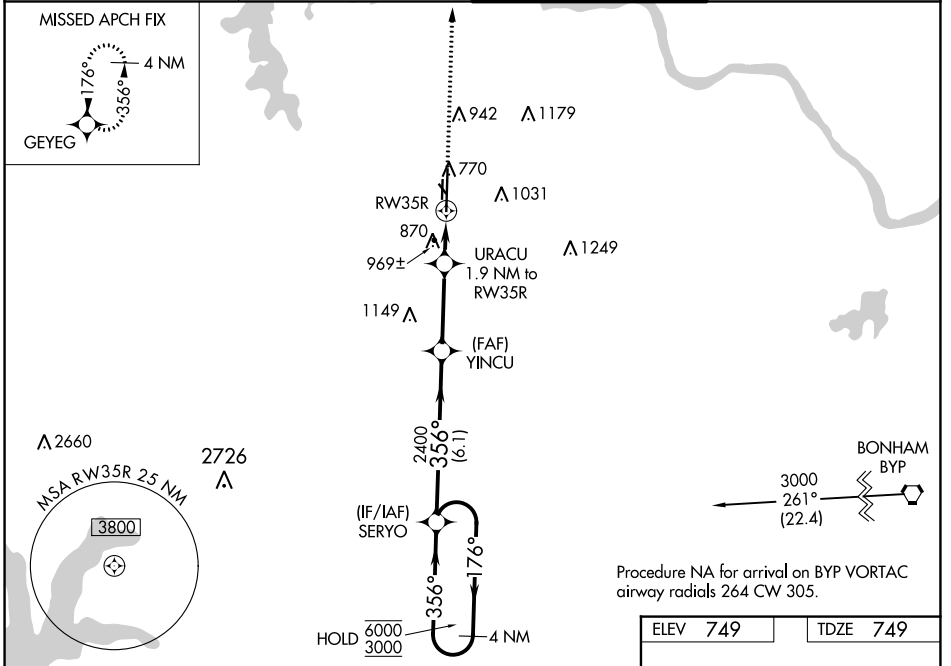


WAAS CH 65928 W35A	APP CRS 356°	Rwy ldg TDZE 749 Apt Elev 749	9000
--	------------------------	---	-------------

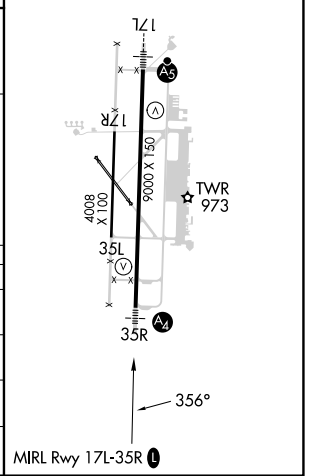
RNAV (GPS) RWY 35R

NORTH TEXAS RGNL/PERRIN FLD (GYI)

RNP APCH.		MALS	MISSED APPROACH: Climb to 3000 direct GEYEG and hold.
<p>▼ Circling Rwy 13, 17R, 31, 35L NA at night. Inop table does not apply to LPV and LNAV/VNAV. ▲ For uncompensated Baro-VNAV systems, LNAV/VNAV NA below -16°C or above 54°C.</p>			
ATIS 118.775	FORT WORTH CENTER 124.75 323.0	NORTH TEXAS TOWER ★ 120.575 (CTAF) 233.7	GND CON 124.125



4 NM Holding Pattern		SERYO		3000	GEYEG
<p>6000 ← 176°</p> <p>3000 → 356°</p> <p>GP 3.00° TCH 51</p>		<p>2400</p> <p>YINCU</p> <p>URACU 1.9 NM to RWY35R</p> <p>*1.3 NM to RWY35R</p> <p>RWY35R</p>		<p>*LNAV only.</p>	
		6.1 NM		3.1 NM	
		0.6 NM		1.3 NM	
CATEGORY	A	B	C	D	
LPV DA	949-3/4		200 (200-3/4)		
LNAV/VNAV DA	1294-15/8		545 (600-15/8)		
LNAV MDA	1220-3/4	471 (500-3/4)	1220-11/8	471 (500-11/8)	
C CIRCLING	1300-1	551 (600-1)	1400-13/4	791 (800-21/2)	



SC-2, 22 FEB 2024 to 21 MAR 2024

SC-2, 22 FEB 2024 to 21 MAR 2024