

(ILEXY4.ILEXY) 23166

ILEXY FOUR DEPARTURE (RNAV) AL-5724 (FAA)

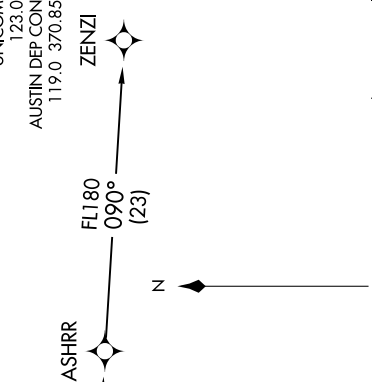
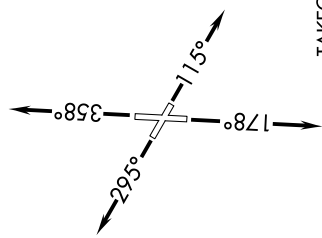
GEORGETOWN EXEC (GTU)
GEORGETOWN, TEXAS

SC-3, 22 FEB 2024 to 21 MAR 2024

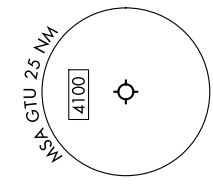
RNAV 1- DME/DME/IRU or GPS.
RADAR required.

TOP ALTITUDE:
ASSIGNED BY ATC

ATIS 118.6
CLNC DEL 119.125
CLNC DEL (when lwr closed) 121.1
GND CON 119.125
GEORGETOWN TOWER* 120.225 (CTAF)
UNICOM 123.0
AUSTIN DEP CON 119.0 370.85



TAKEOFF MINIMUMS
 Rwy 11, 29, 36: Standard.
 Rwy 18: 200-1/4 or standard with minimum climb of 250' per NM to 1000.



NOTE: Houston terminal area arrivals expect routing from IILEXY.
NOTE: JAYJO transition to join V306 only.
NOTE: Aircraft not destined the Houston terminal area or joining V306 must file the ZENZI transition.

NOTE: Chart not to scale.

DEPARTURE ROUTE DESCRIPTION

- TAKEOFF RUNWAY 11:** Climb on heading 115° or as assigned by ATC for vectors to cross HOOKK at or above 5000, thence . . .
- TAKEOFF RUNWAY 18:** Climb on heading 178° or as assigned by ATC for vectors to cross HOOKK at or above 5000, thence . . .
- TAKEOFF RUNWAY 29:** Climb on heading 295° or as assigned by ATC for vectors to cross HOOKK at or above 5000, thence . . .
- TAKEOFF RUNWAY 36:** Climb on heading 358° or as assigned by ATC for vectors to cross HOOKK at or above 5000, thence . . .

. . . on track 090° to IILEXY, then on transition. Maintain altitude assigned by ATC. Expect filed altitude 10 minutes after departure.

JAYJO TRANSITION (ILEXY4.JAYJO)
 ZENZI TRANSITION (ILEXY4.ZENZI)

ILEXY FOUR DEPARTURE (RNAV) (ILEXY4.ILEXY) 15JUN23

GEORGETOWN, TEXAS
GEORGETOWN EXEC (GTU)

SC-3, 22 FEB 2024 to 21 MAR 2024