

WAAS CH 97635 W05A	APP CRS 049°	Rwy Idg TDZE 40 Apt Elev 40	6005
---------------------------------	------------------------	---	-------------

RNAV (GPS) RWY 5

GEORGETOWN COUNTY (GGE)

RNP APCH.

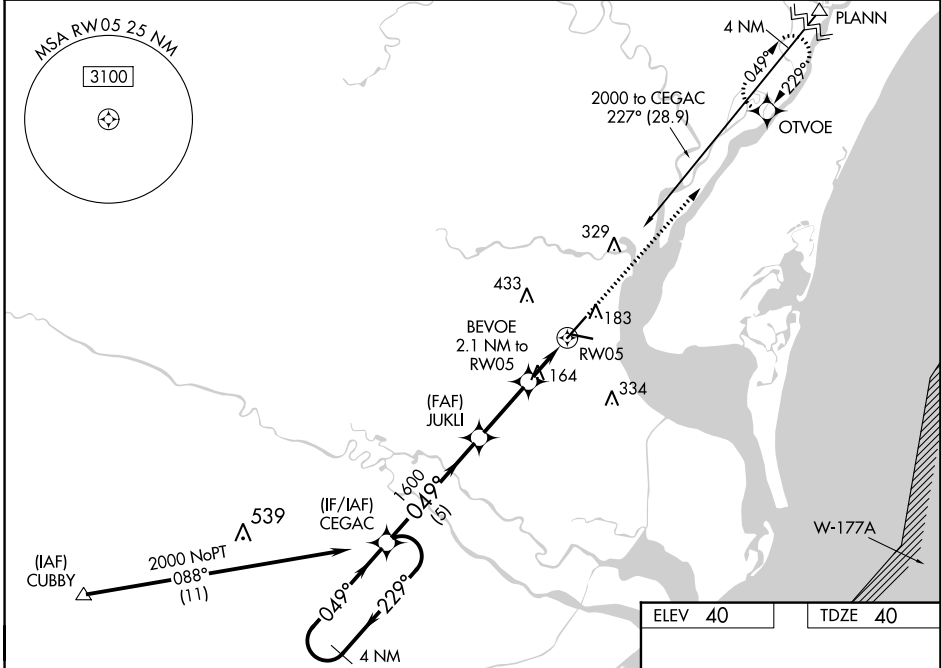
⚠ For uncompensated Baro-VNAV systems, LNAV/VNAV NA below -15°C or above 54°C. Rwy 5 helicopter visibility reduction below 3/4 SM NA.
⚠ For inop ALS, increase LNAV/VNAV visibility Cats A/B to 3/8 SM.
 Inop table does not apply to LPV all Cats. Circling Rwy 11, 29 NA at night.

ODALS



MISSED APPROACH:
Climb to 2000 direct
OTVOE and hold.

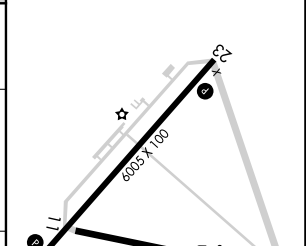
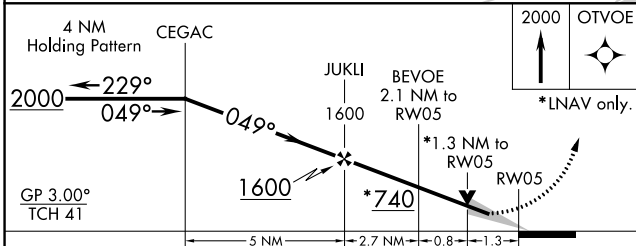
AWOS-3 118.275	MYRTLE BEACH APP CON ★ 127.4 257.95	GCO 121.725	UNICOM 123.0 (CTAF) ①
--------------------------	---	-----------------------	--



SE-2, 22 FEB 2024 to 21 MAR 2024

SE-2, 22 FEB 2024 to 21 MAR 2024

ELEV 40	TDZE 40
---------	---------



CATEGORY	A	B	C	D
LPV DA		290-3/4	250 (300-3/4)	
LNAV/VNAV DA		304-3/4	264 (300-3/4)	
LNAV MDA	480-3/4	440 (500-3/4)	480-1/8	440 (500-1/8)
CIRCLING	500-1	520-1	740-2	740-2 1/4
	460 (500-1)	480 (500-1)	700 (700-2)	700 (700-2 1/4)

MIRL Rwy 11-29
 MIRL Rwy 5-23 **①**
 REIL Rwy 5 **①**