

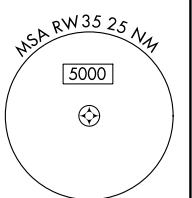
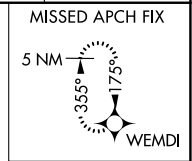
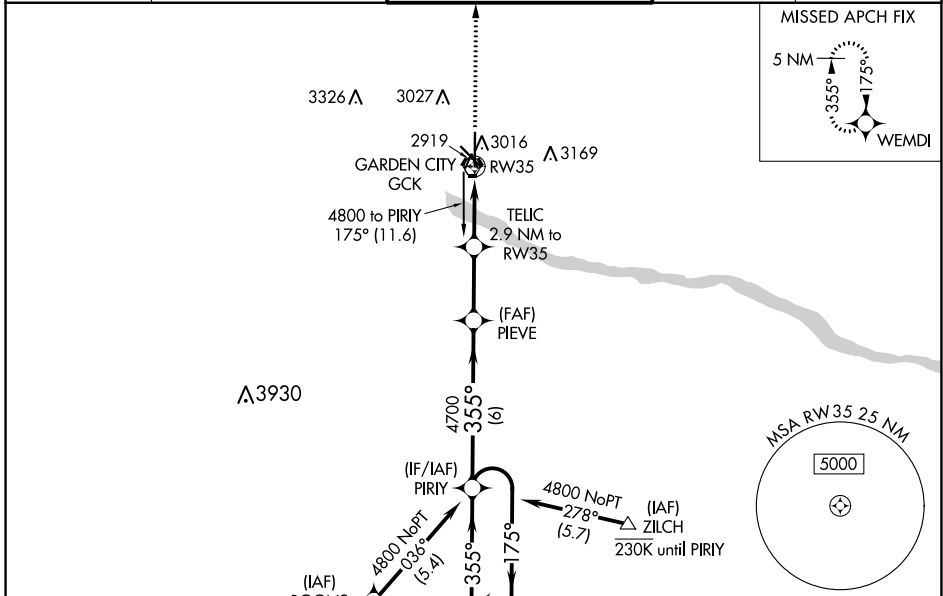
WAAS CH 63103 W35A	APP CRS 355°	Rwy Idg 7299
		TDZE 2885
		Apt Elev 2891

RNAV (GPS) RWY 35

GARDEN CITY RGNL (GCK)

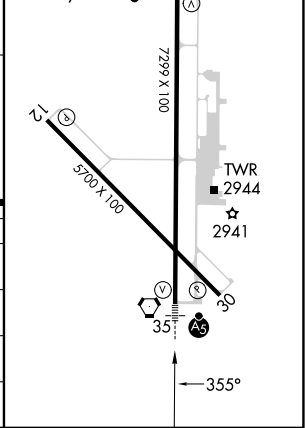
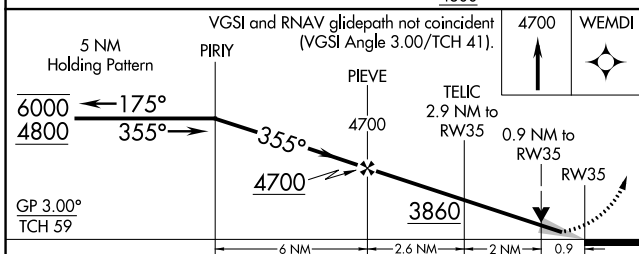
RNP APCH-GPS.		MALSR	MISSED APPROACH: Climb to 4700 direct WEMDI and hold.
<p>⚠ For uncompensated Baro-VNAV systems, LNAV/VNAV NA below -20°C or above 54°C. For inop ALS, increase LNAV/VNAV Cats C/D visibility to ¾ SM, and LNAV Cats C/D visibility to ½ SM.</p>			

ASOS 121.325	KANSAS CITY CENTER 125.2 285.425	GARDEN CITY TOWER * 118.15 (CTAF) 0 254.4	GND CON 119.0 254.4	UNICOM 122.95
------------------------	--	---	-------------------------------	-------------------------



ELEV 2891	TDZE 2885
-----------	-----------

REIL Rwy 12, 17 and 30
MIRL Rwy 12-30
HIRL Rwy 17-35



CATEGORY	A	B	C	D
LPV DA		3085-½	200 (200-½)	
LNAV/VNAV DA		3135-½	250 (300-½)	
LNAV MDA		3180-½	295 (300-½)	
CIRCLING	3320-1 429 (500-1)	3360-1 469 (500-1)	3480-1½ 589 (600-1½)	3480-2 589 (600-2)

NC-2, 22 FEB 2024 to 21 MAR 2024

NC-2, 22 FEB 2024 to 21 MAR 2024