

| | | |
|--|------------------------|--|
| VOR/DME FCM 117.7 Chan 124 | APP CRS 100° | Rwy Idg TDZE Apt Elev 5001 906 906 |
|--|------------------------|--|

VOR RWY 10R

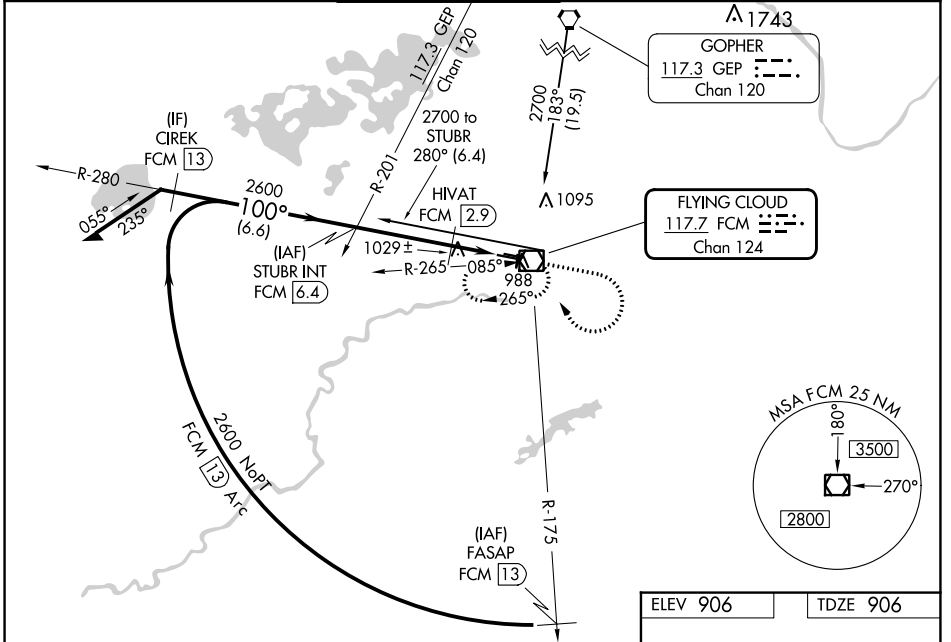
FLYING CLOUD (FCM)

⚠ When local altimeter setting not received, use Minneapolis St-Paul/Wald-Chamberlain altimeter setting and increase all MDA 40 feet, HIVAT fix minimums: Increase S-10R Cat C visibility ¼ mile. For inoperative MALSRL, HIVAT fix minimums: Increase S-10R Cat D visibility to 1 ¼ mile. VDP NA when using Minneapolis St-Paul/Wald-Chamberlain altimeter setting. When Circling to Rwy 18, 36 at night, operational VGSI required, remain on or above VGSI glidepath until threshold.

MALSRL

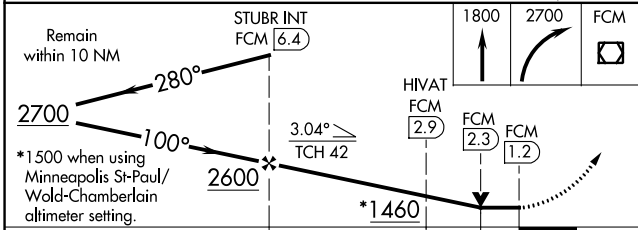
MISSED APPROACH: Climb to 1800 then climbing right turn to 2700 direct FCM VOR/DME and hold, continue climb-in-hold to 2700.

| | | | | | |
|----------------------|---|--|-------------------------|---|-------------------------|
| ATIS 124.9 | MINNEAPOLIS APP CON 134.7 284.7 | FLYING CLOUD TOWER * 119.15 (CTAF) | GND CON 121.7 | CLNC DEL 121.7 (When twr closed) | UNICOM 122.95 |
|----------------------|---|--|-------------------------|---|-------------------------|

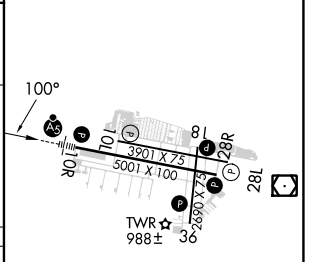


NC-1, 22 FEB 2024 to 21 MAR 2024

NC-1, 22 FEB 2024 to 21 MAR 2024



| | |
|----------|----------|
| ELEV 906 | TDZE 906 |
|----------|----------|



| CATEGORY | A | B | C | D |
|-----------------------------------|-------------|-------------|--------------|-------------|
| S-10R | 1460-½ | 554 (600-½) | 1460-1 | 1460-1¼ |
| CIRCLING | 1460-1 | 554 (600-1) | 1460-1½ | 1540-2 |
| HIVAT FIX MINIMUMS (DME REQUIRED) | | | | |
| S-10R | 1280-½ | 374 (400-½) | 1280-1 | 374 (400-1) |
| CIRCLING | 1320-1 | 1440-1 | 1440-1½ | 1540-2 |
| | 414 (500-1) | 534 (600-1) | 534 (600-1½) | 634 (700-2) |

HIRL Rwy 10R-28L

REIL Rwys 10L and 28R

REIL Rwys 18, 28L, and 36

MIRL Rwy 10L-28R

MIRL Rwy 18-36

FAF to MAP 5.2 NM

| | | | | | |
|---------|------|------|------|------|------|
| Knots | 60 | 90 | 120 | 150 | 180 |
| Min:Sec | 5:12 | 3:28 | 2:36 | 2:05 | 1:44 |