

WAAS CH 72921 W17A	APP CRS 174°	Rwy Idg TDZE 994 Apt Elev 1002
--	------------------------	--

RNAV (GPS) RWY 17

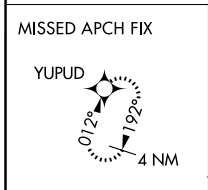
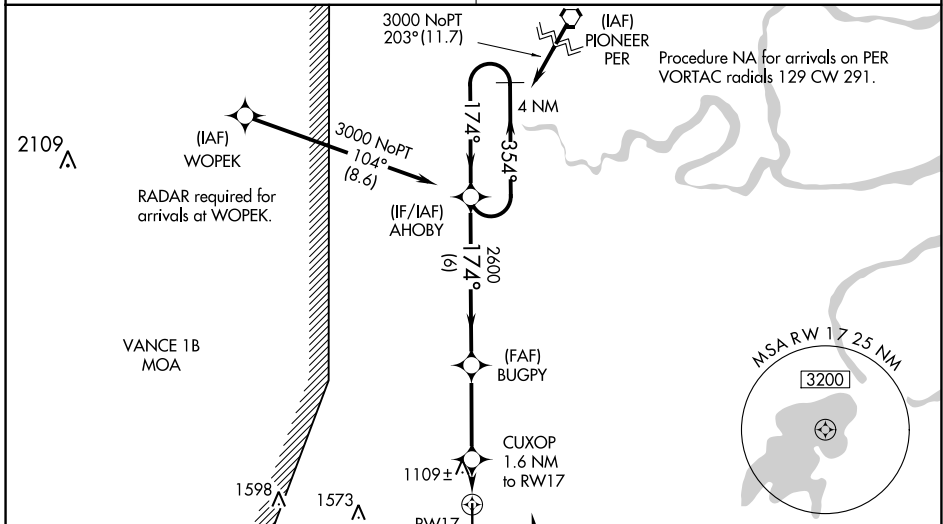
PERRY MUNI (F22)

RNP APCH.

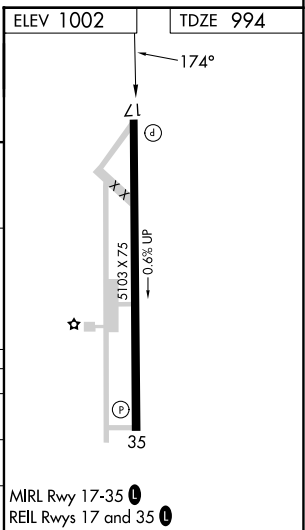
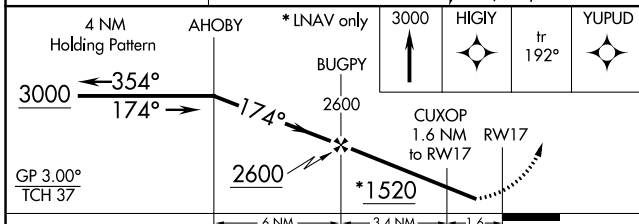
NA Baro-VNAV NA when using KPNC altimeter setting. For uncompensated Baro-VNAV systems, LNAV/VNAV NA below -16°C or above 54°C. When VGSI inop, procedure NA at night. Rwy 17 helicopter visibility reduction below 1 SM NA. Obtain local altimeter setting on CTAF; when not received, use Ponca City altimeter setting and increase all DA 53 feet, all MDA 60 feet and increase LNAV/VNAV all Cats and LNAV Cat C visibility ¼ mile.

MISSED APPROACH: Climb to 3000 direct HIGY and on track 192° to YUPUD and hold.

KANSAS CITY CENTER 127.8 319.1	UNICOM 122.8 (CTAF)
--	-------------------------------



Procedure NA for arrivals at GULLI on V140 eastbound.



CATEGORY	A	B	C	D
LPV DA	1244-1	250 (300-1)		NA
LNAV/VNAV DA	1434-1½	440 (500-1½)		NA
LNAV MDA	1360-1	366 (400-1)	1360-1½ 366 (400-1½)	NA

SC-1, 22 FEB 2024 to 21 MAR 2024

SC-1, 22 FEB 2024 to 21 MAR 2024

WAAS CH 61140 W35A	APP CRS 354°	Rwy Idg TDZE 1003 Apt Elev 1003
--	------------------------	---

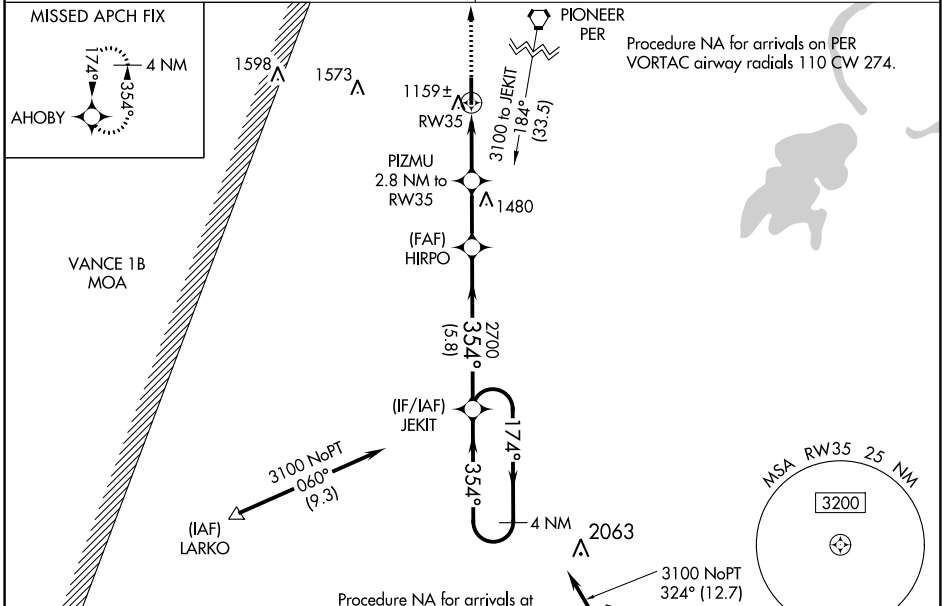
RNAV (GPS) RWY 35

PERRY MUNI (F22)

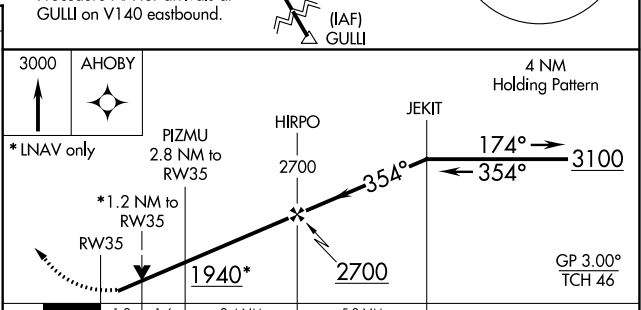
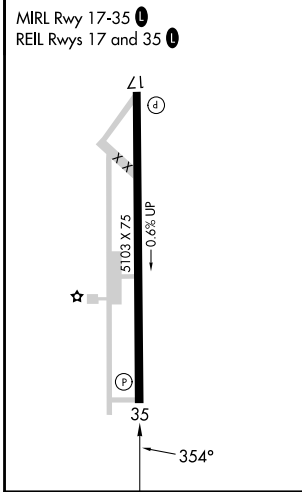
NA For uncompensated Baro-VNAV systems, procedure NA below -16°C (4°F) or above 54°C (130°F). DME/DME RNP-0.3 NA. Baro-VNAV and VDP NA when using Ponca City altimeter setting. Rwy 35 helicopter visibility reduction below 3/4 SM NA. Obtain local altimeter setting on CTAF; when not received, use Ponca City altimeter setting and increase all DA 53 feet and all visibility 1/8 SM, increase all MDAs 60 feet and Cat C visibility 1/4 SM.

MISSED APPROACH: Climb to 3000 direct AHOBY and hold.

KANSAS CITY CENTER **127.8 319.1** UNICOM **122.8 (CTAF)**



ELEV 1003	TDZE 1003
-----------	-----------



CATEGORY	A	B	C	D
LPV DA	1253-3/4	250 (300-3/4)		NA
LNAV/VNAV DA	1330-1 1/8	327 (400-1 1/8)		NA
LNAV MDA	1420-1	417 (500-1)	1420-1 1/8 417 (500-1 1/8)	NA
C CIRCLING	1480-1	477 (500-1)	1620-1 3/4 617 (700-1 3/4)	NA

SC-1, 22 FEB 2024 to 21 MAR 2024

SC-1, 22 FEB 2024 to 21 MAR 2024

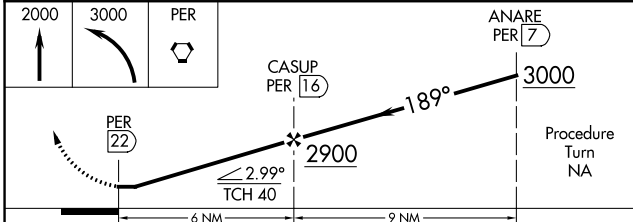
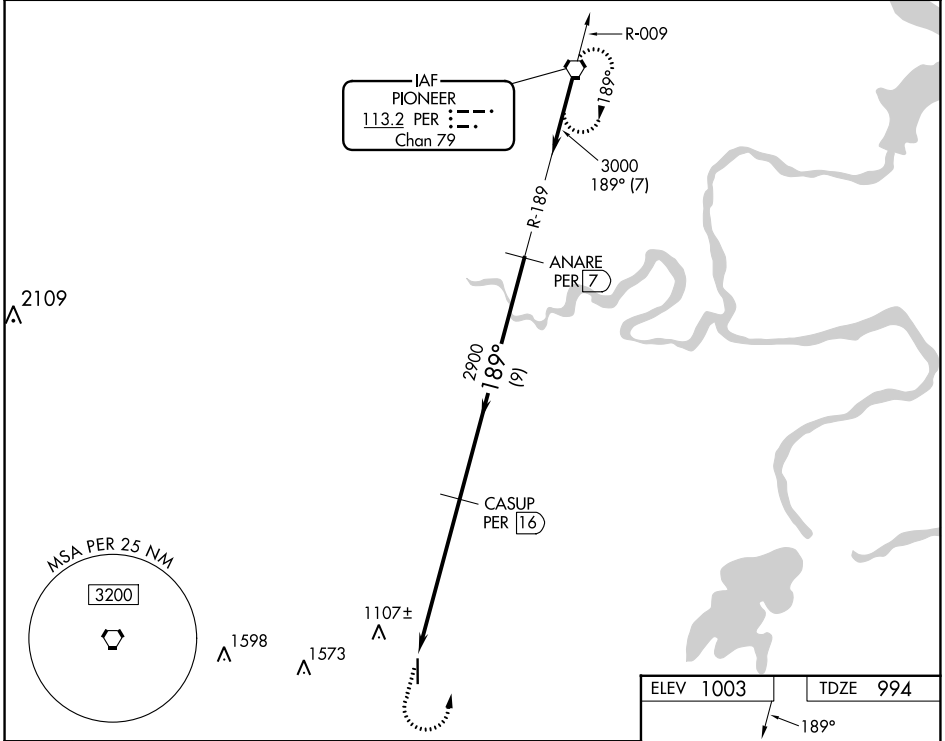
VORTAC PER 113.2 Chan 79	APP CRS 189°	Rwy Idg 5103 TDZE 994 Apt Elev 1003
--	------------------------	--

VOR RWY 17

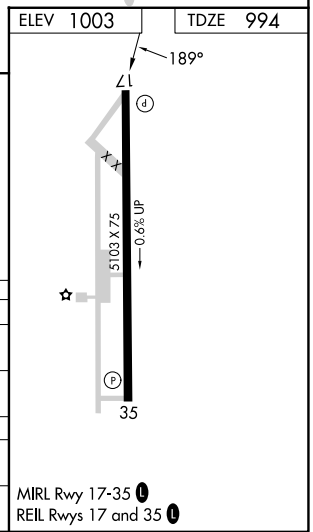
PERRY MUNI (F22)

NA Obtain local altimeter setting on CTAF; when not received, use Ponca City altimeter setting. DME required. MISSED APPROACH: Climb to 2000 then climbing left turn to 3000 direct PER VORTAC and hold.

KANSAS CITY CENTER 127.8 319.1	UNICOM 122.8 (CTAF) 0
--	---------------------------------



CATEGORY	PONCA CITY ALTIMETER SETTING MINIMUMS			D
	A	B	C	
S-17	1500-1 506 (500-1)	1500-1¼ 506 (500-1¼)	1500-1½ 506 (500-1½)	NA
C CIRCLING	1500-1 497 (500-1)	1500-1¼ 497 (500-1¼)	1620-1¾ 617 (700-1¾)	NA
S-17	1560-1 566 (600-1)	1560-1¼ 566 (600-1¼)	1560-1⅝ 566 (600-1⅝)	NA
C CIRCLING	1560-1 557 (600-1)	1560-1¼ 557 (600-1¼)	1680-2 677 (700-2)	NA



SC-1, 22 FEB 2024 to 21 MAR 2024

SC-1, 22 FEB 2024 to 21 MAR 2024