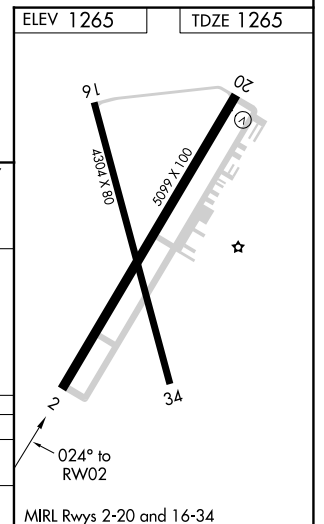
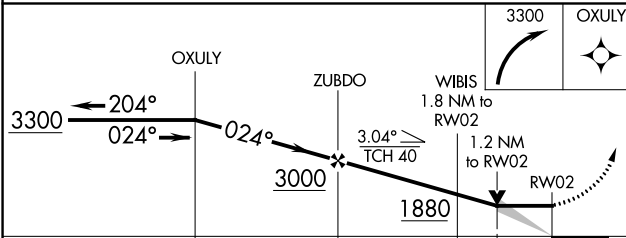
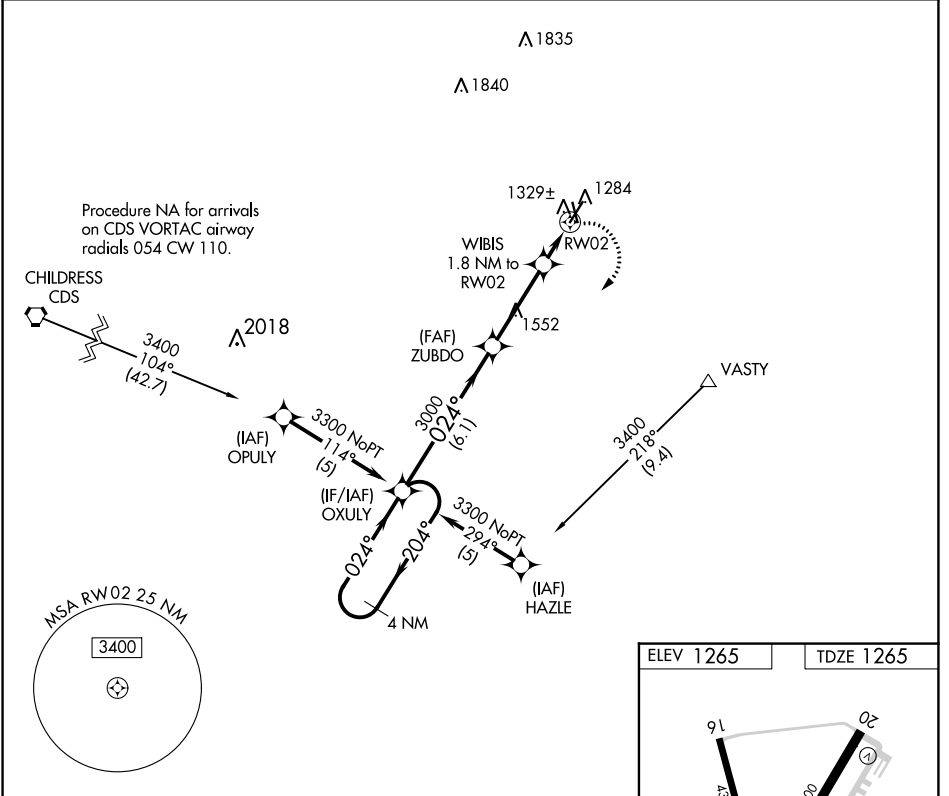


APP CRS	Rwy Idg	<b>5099</b>
<b>024°</b>	TDZE	<b>1265</b>
	Apt Elev	<b>1265</b>

# RNAV (GPS) RWY 2

WILBARGER COUNTY (F05)

RNP APCH.		MISSED APPROACH: Climbing right turn to 3300 direct OXULY and hold.
<p>▼ When local altimeter setting not received, use Frederick altimeter setting: ▲ increase all MDA 40 feet. VDP NA when using Frederick altimeter setting.</p>	<p>AWOS-3 <b>118.525</b></p>	<p>ALTUS APP CON* <b>125.1 353.7</b></p>
		<p>UNICOM <b>122.8 (CTAF) 0</b></p>



CATEGORY	A	B	C	D
LNNAV MDA	1680-1	415 (500-1)	1680-1¼ 415 (500-1¼)	NA
CIRCLING	1680-1 415 (500-1)	1720-1 455 (500-1)	1800-1½ 535 (600-1½)	NA

SC-2, 22 FEB 2024 to 21 MAR 2024

SC-2, 22 FEB 2024 to 21 MAR 2024

WAAS CH <b>63018</b> <b>W20A</b>	APP CRS <b>204°</b>	Rwy Idg TDZE Apt Elev	<b>5099</b> <b>1259</b> <b>1265</b>
--	------------------------	-----------------------------	---

# RNAV (GPS) RWY 20

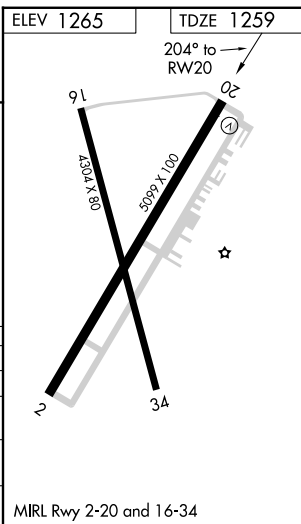
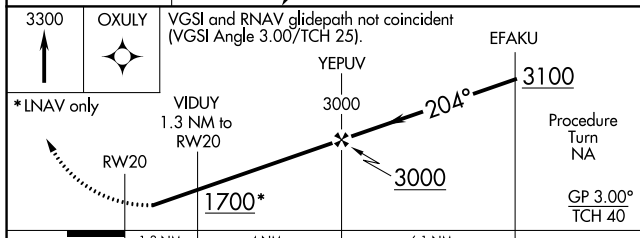
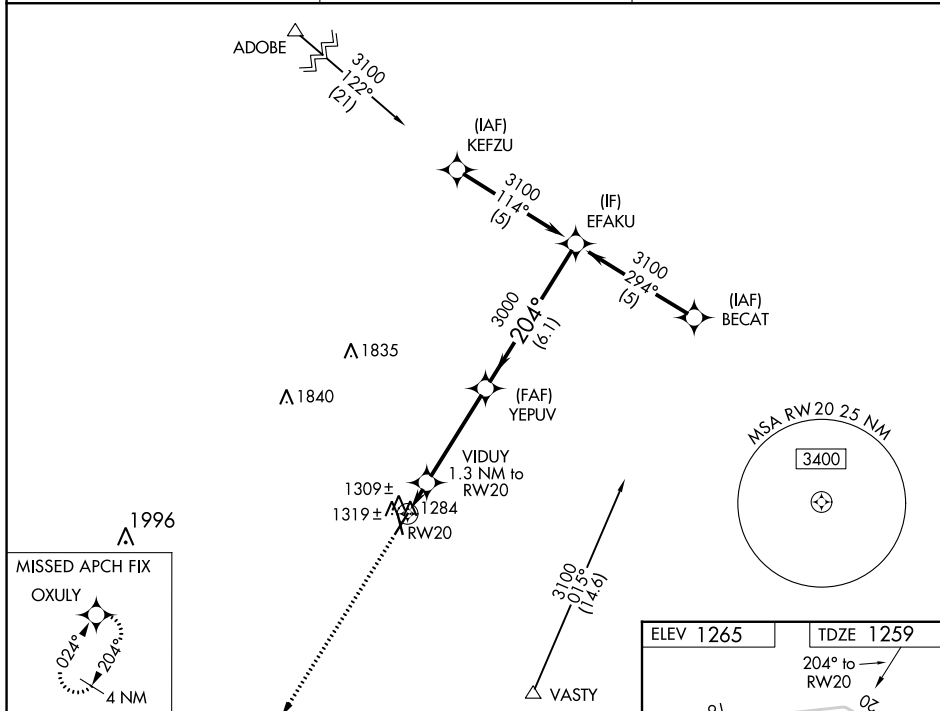
WILBARGER COUNTY (F05)

RNP APCH

**⚠** Baro-VNAV NA when using Frederick altimeter setting. For uncompensated Baro-VNAV systems, LNAV/VNAV NA below -17°C or above 54°C. Rwy 20 helicopter visibility reduction below ¼ SM NA. When local altimeter setting not received, use Frederick altimeter setting: increase all DA/MDA 40 feet.

**MISSED APPROACH:**  
Climb to 3300 direct OXULY and hold.

AWOS-3 <b>118.525</b>	ALTUS APP CON* <b>125.1 353.7</b>	UNICOM <b>122.8 (CTAF) 0</b>
--------------------------	--------------------------------------	---------------------------------



CATEGORY	A	B	C	D
LPV DA	1509-1	250 (300-1)		NA
LNAV/VNAV DA	1585-1¼	326 (400-1¼)		NA
LNAV MDA	1580-1	321 (400-1)		NA
CIRCLING	1660-1 395 (400-1)	1720-1 455 (500-1)	1800-1½ 535 (600-1½)	NA

SC-2, 22 FEB 2024 to 21 MAR 2024

SC-2, 22 FEB 2024 to 21 MAR 2024