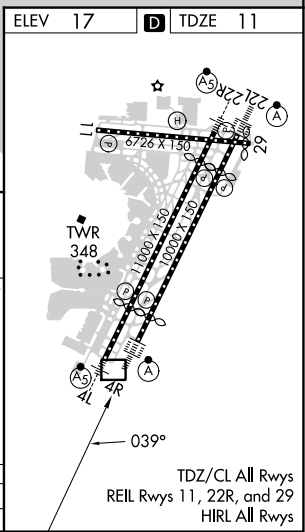
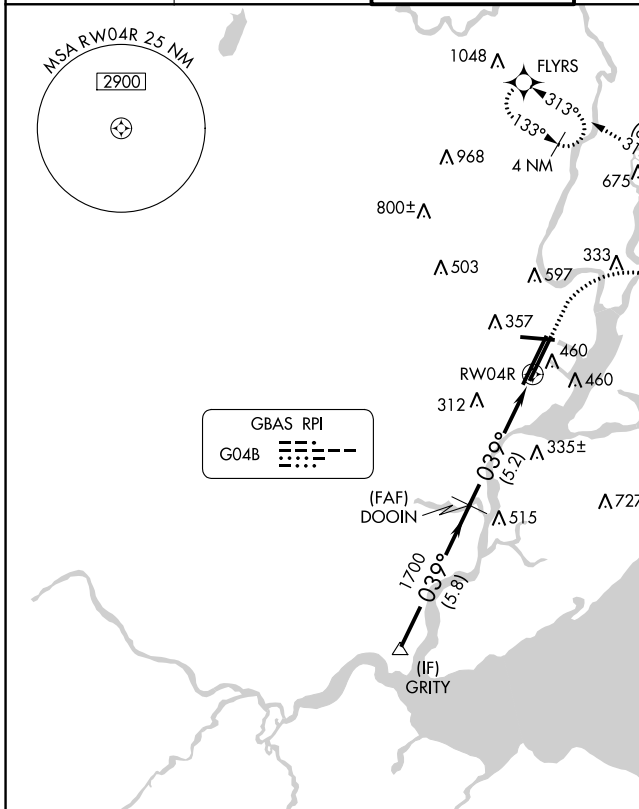


GBAS CH <b>21083</b> <b>G04B</b>	APP CRS <b>039°</b>	Rwy Idg <b>8810</b> TDZE <b>11</b> Apt Elev <b>17</b>
--	------------------------	---

# GLS RWY 4R

NEWARK LIBERTY INTL (EWR)

RNP APCH - GPS. RADAR required.		ALSIF-2	MISSED APPROACH: (Do not exceed 210K until NEBTE) Climb to 560 then climbing right turn to 2000 direct TYNIE and on track 015° to NEBTE, cross NEBTE at or below 2000 then climbing left turn to 3000 on track 313° to FLYRS and hold, continue climb-in-hold to 3000.		
Autopilot coupled approach NA below 211.		(A)			
D-ATIS <b>115.7 134.825</b>	NEW YORK APP CON <b>128.55 379.9</b>	NEWARK TOWER <b>118.3 257.6</b>	GND CON <b>121.8</b>	CLNC DEL <b>118.85</b>	CPDLC



GRITY	560	2000	TYNIE	tr 015°	NEBTE	3000	FLYRS
	↑	↷	✧		✧	↷	✧
				tr 015°	2000	tr 313°	
VGSI and GLS glidepath not coincident (VGSI Angle 2.95/TCH 71).							
2800	039°		1700	DOOIN		RWY 4R	
GP 2.95°			1700				
TCH 55							
	5.8 NM			5.2 NM			
CATEGORY	A	B	C	D			
GLS DA	211/18		200 (200-1/2)				

NE-2, 22 FEB 2024 to 21 MAR 2024

NE-2, 22 FEB 2024 to 21 MAR 2024

# GLS RWY 4R