

LOC/DME I-EUG 110.1 Chan 38	APP CRS 164°	Rwy Idg 8009 TDZE 364 Apt Elev 374
--	------------------------	---

ILS RWY 16R (CAT II & III)

MAHLON SWEET FLD (EUG)

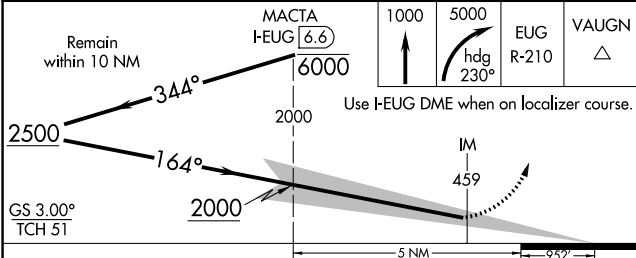
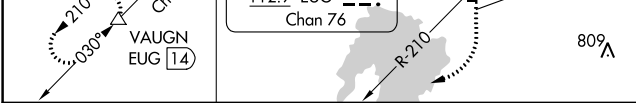
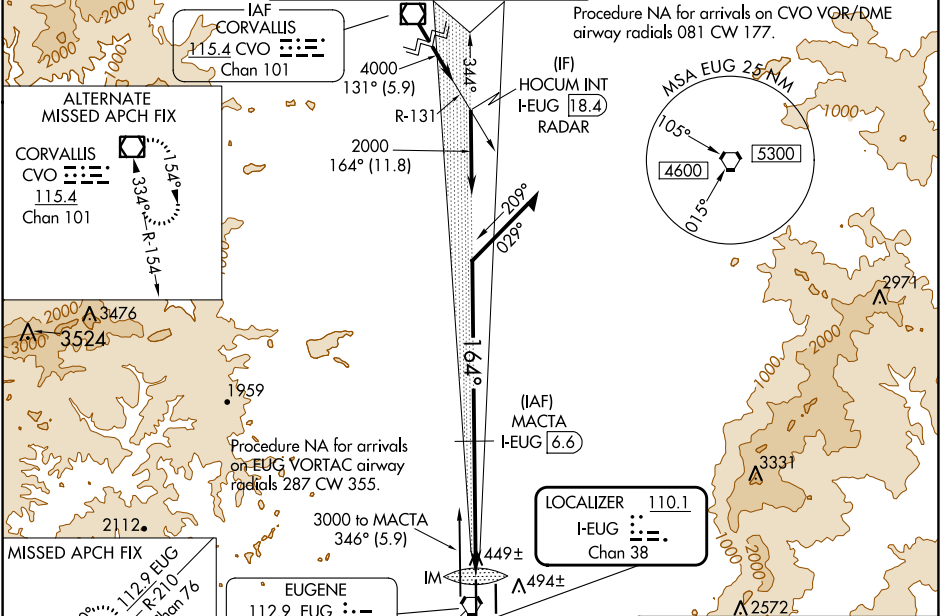
DME required.

Simultaneous approach authorized. Cat II RVR 1000 authorized with specific OPSPEC, MSPEC, or LOA approval and use of autoland or HUD to touchdown. Cat II and III minimums NA when control tower closed.

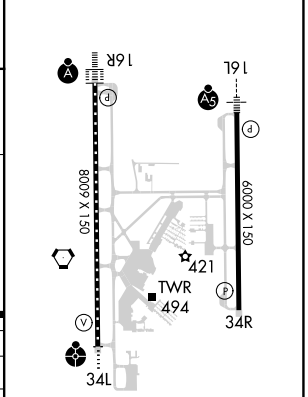
ALSF-2

MISSED APPROACH: Climb to 1000 then climbing right turn to 5000 on heading 230° and on EUG VORTAC R-210 to VAUGN/EUG 14 DME and hold, continue climb-in-hold to 5000.

ATIS 125.225	CASCADE APP CON* 119.6 348.7	EUGENE TOWER* 118.9 (CTAF) 371.9 (Rwy 16R/34L) 124.15 371.9 (Rwy 16L/34R)	GND CON 121.7 269.5	CLNC DEL 121.7 269.5	UNICOM 122.95
------------------------	--	--	-------------------------------	--------------------------------	-------------------------



ELEV 374	TDZE 364
----------	----------



CATEGORY	A	B	C	D
S-ILS 16R	CAT II RA 108/12 100 DA 464			
S-ILS 16R	CAT III RVR 06			

CATEGORY II & III ILS - SPECIAL AIRCREW & AIRCRAFT CERTIFICATION REQUIRED

MAHLON SWEET FLD (EUG)
ILS RWY 16R (CAT II & III)

TDZ/CL Rwy 16R
REIL Rwy 34R
HIRL Rwy 16L-34R and 16R-34L