

WAAS CH 40418	APP CRS 296°	Rwy Idg TDZE Apt Elev	4304 867 869
W29A			

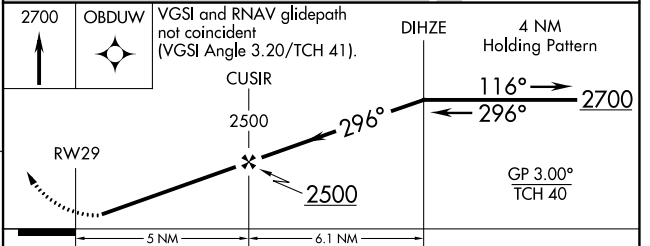
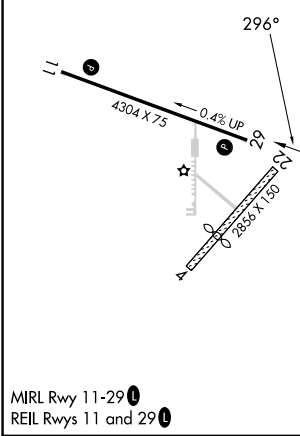
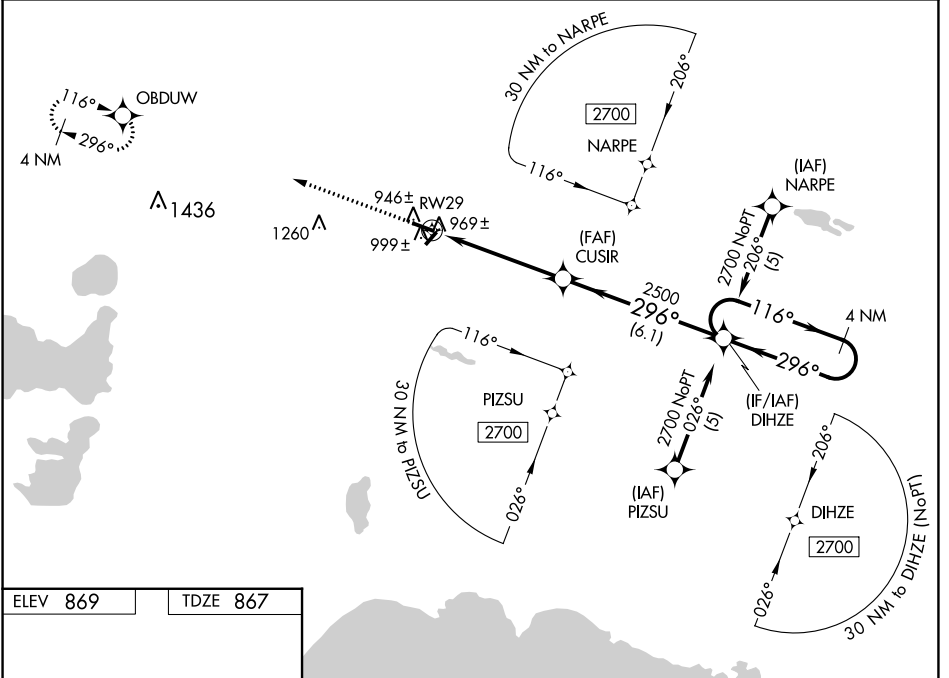
RNAV (GPS) RWY 29

LUCE COUNTY (ERY)

⚠ For uncompensated Baro-VNAV systems, LNAV/VNAV NA below -16°C (4°F) or above 47°C (116°F). DME/DME RNP-0.3 NA. Visibility reduction by helicopters NA. When local altimeter setting not received, use Chippewa County Intl altimeter setting and increase LPV DA to 1222 feet; increase LNAV/VNAV DA to 1344 feet; increase all MDAs 120 feet and LNAV visibility Cat C 3/8 SM and Cat D 1/8 SM, and Circling visibility Cat C/D 1/2 SM. Baro-VNAV NA when using Chippewa County Intl altimeter setting. Circling NA to Rwy's 4 and 22.

MISSED APPROACH:
Climb to 2700 direct
OBDUW and hold.

AWOS-3P 119.525	MINNEAPOLIS CENTER 134.6 354.05	UNICOM 122.8 (CTAF) 0
---------------------------	---	---------------------------------



CATEGORY	A	B	C	D
LPV DA	1117-1		250 (300-1)	
LNAV/VNAV DA	1239-1 1/2		372 (400-1 1/2)	
LNAV MDA	1260-1		393 (400-1)	
CIRCLING	1300-1 431 (500-1)	1380-1 511 (600-1)	1460-1 1/2 591 (600-1 1/2)	1560-2 1/4 691 (700-2 1/4)