


APP CRS	Rwy Idg	7000
120°	TDZE	1225
	Apt Elev	1249

RNAV (RNP) RWY 12

PANGBORN MEML (EAT)

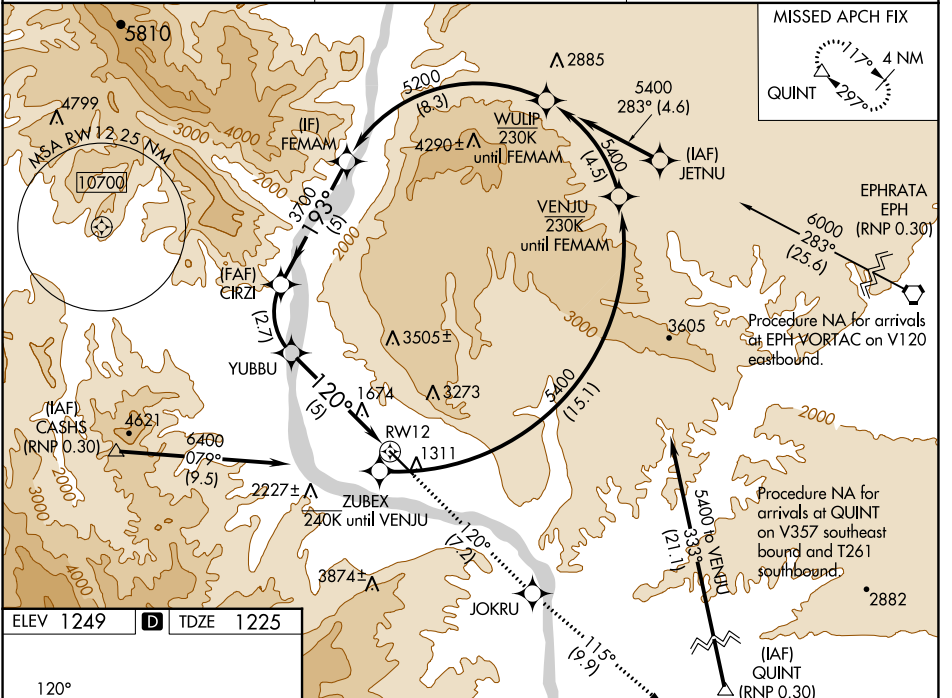
⚠ For uncompensated Baro-VNAV systems, procedure NA below -10°C (14°F) or above 54°C (130°F). RF required. GPS required. FD or HUD required.

MALSRS  MISSED APPROACH: Climb to 5400 on track 120° to JOKRU and on track 115° to QUINT and hold.
 *Missed approach requires a minimum climb of 319 feet per NM to 3700.
 #Missed approach requires a minimum climb of 295 feet per NM to 3700.

ASOS **119.925**

SEATTLE CENTER **126.1**

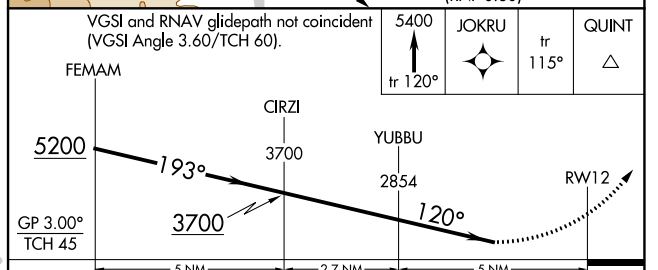
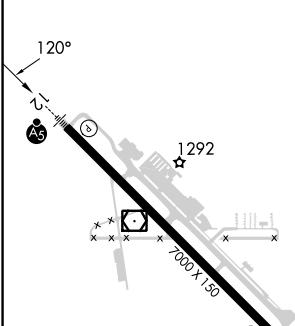
UNICOM **123.0 (CTAF) 0**



NW-1, 22 FEB 2024 to 21 MAR 2024

NW-1, 22 FEB 2024 to 21 MAR 2024

ELEV 1249	D	TDZE 1225
-----------	----------	-----------



CATEGORY	A	B	C	D
RNP 0.15 DA*		1995-3	770 (800-3)	
RNP 0.19 DA#		2072-3	847 (900-3)	
RNP 0.30 DA		2417-5	1192 (1200-5)	

AUTHORIZATION REQUIRED