

WAAS CH <b>77923</b> <b>W19A</b>	APP CRS <b>194°</b>	Rwy Idg TDZE Apt Elev	<b>6002</b> <b>4482</b> <b>4514</b>
--	------------------------	-----------------------------	---

# RNAV (GPS) RWY 19

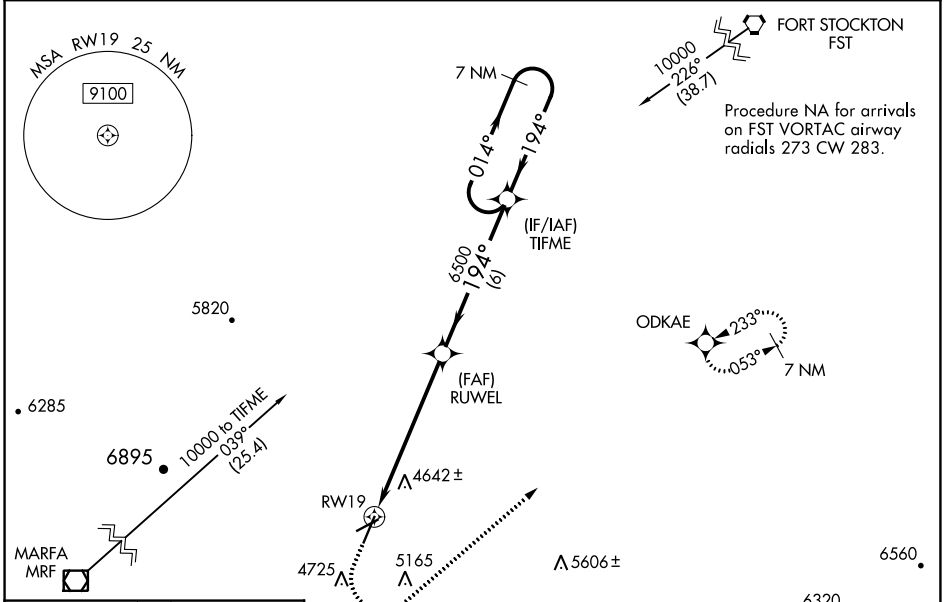
ALPINE-CASPARIS MUNI (E38)

RNP APCH.

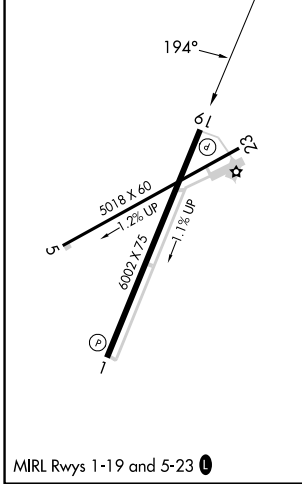
**⚠** For uncompensated Baro-VNAV systems, LNAV/VNAV NA below -23°C or above 54°C. Circling NA W of Rwy 1-19. Rwy 19 helicopter visibility reduction below ¾ SM NA.

**⚠** MISSED APPROACH: (Do not exceed 165K until ODKAE) Climb to 5200 then climbing left turn to 9000 direct ODKAE and hold, continue climb-in-hold to 9000.

AWOS-3 <b>119.025</b>	ALBUQUERQUE CENTER <b>135.875 292.15</b>	UNICOM <b>122.8 (CTAF) 0</b>
--------------------------	---	---------------------------------



ELEV 4514	TDZE 4482
-----------	-----------



5200	9000	ODKAE	VGSi and RNAV glidepath not coincident (VGSi Angle 3.00/TCH 40).	
*LNAV only.		RWEL	7 NM Holding Pattern	
*2.2 NM to RWY 19		6500	8000	
2.2 NM		4.1 NM	6 NM	
CATEGORY	A	B	C	D
LPV DA	4964-1⅜		482 (500-1⅜)	NA
LNAV/VNAV DA	5125-1⅞		643 (700-1⅞)	NA
LNAV MDA	5180-1	698 (700-1)	5180-2 698 (700-2)	NA
<b>C</b> CIRCLING	5180-1 666 (700-1)	5460-1¼ 946 (1000-1¼)	5760-3 1246 (1300-3)	NA

SC-3, 22 FEB 2024 to 21 MAR 2024

SC-3, 22 FEB 2024 to 21 MAR 2024