

RADAR and DME required.

**TOP ALTITUDE:  
ASSIGNED BY ATC**

TAKEOFF MINIMUMS

Rwys 17L, 35R: NA - Environmental.  
Waterways 17, 35: NA - Air Traffic.  
Rwys 17R, 35L: Standard.

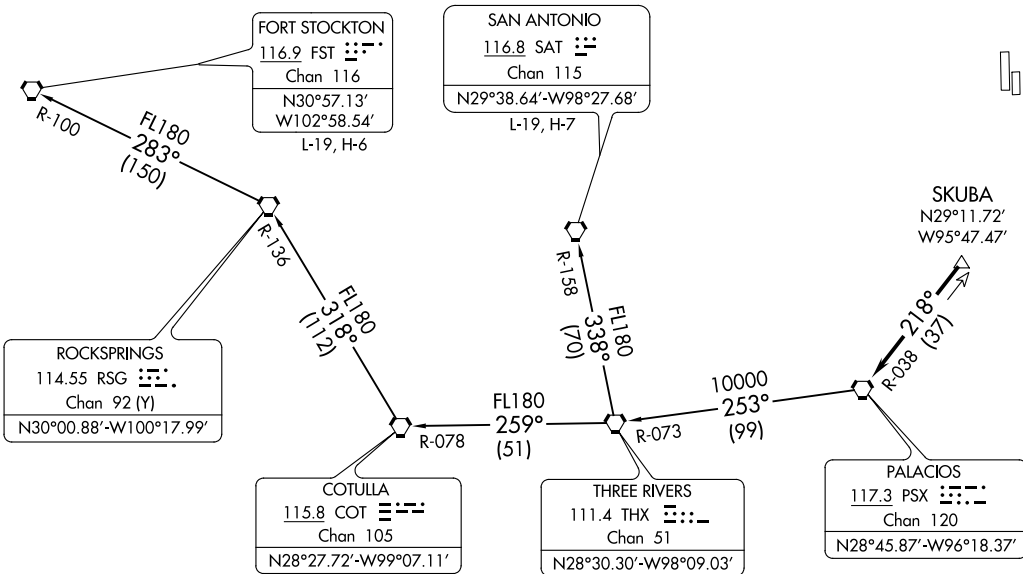
PALACIOS THREE DEPARTURE  
(PSX3.PSX) 03NOV22

(PSX3.PSX) 22307  
PALACIOS THREE DEPARTURE

AL-5457 (FAA)

DAVID WAYNE HOOKS MEML (DWH)  
HOUSTON, TEXAS

ATIS  
128.375  
CLNC DEL  
119.45  
GND CON  
121.8 239.0  
HOOKS TOWER\*  
127.4 354.1 (EAST)  
118.4 (CTAF) 354.1 (WEST)  
HOUSTON DEP CON  
119.7 281.4 (Rwys 35L/R)  
123.8 257.7 (Rwys 17L/R)



NOTE: Chart not to scale.

(NARRATIVE ON FOLLOWING PAGE)

HOUSTON, TEXAS  
DAVID WAYNE HOOKS MEML (DWH)

# PALACIOS THREE DEPARTURE



## DEPARTURE ROUTE DESCRIPTION

TAKEOFF ALL RUNWAYS: When entering controlled airspace, climb on assigned heading for RADAR vectors to SKUBA. Maintain ATC assigned altitude. Expect filed altitude 10 minutes after departure, thence . . . .

. . . . on PSX R-038 to PSX VORTAC.

FORT STOCKTON TRANSITION (PSX3.FST): From over PSX VORTAC on PSX R-253 and THX R-073 to THX VORTAC, then on THX R-259 and COT R-078 to COT VORTAC, then on COT R-318 and RSG R-136 to RSG VORTAC, then on RSG R-283 and FST R-100 to FST VORTAC.

SAN ANTONIO TRANSITION (PSX3.SAT): From over PSX VORTAC on PSX R-253 and THX R-073 to THX VORTAC, then on SAT R-158 to SAT VORTAC.

SC-5, 22 FEB 2024 to 21 MAR 2024

SC-5, 22 FEB 2024 to 21 MAR 2024