

RADAR and DME required.

**TOP ALTITUDE:
ASSIGNED BY ATC**

REGIONAL DEP CON
118.1 306.95
CLNC DEL
123.95
GND CON
123.95
DENTON TOWER *
119.95 (CTAF)

TAKEOFF MINIMUMS
Rwys 18L/R, 36L/R: Standard.

KINGDOM FOUR DEPARTURE
(KING4.TTT) 251ANZ4

(KING4.TTT) 24053
KINGDOM FOUR DEPARTURE

AL-5866 (FAA)

DENTON ENTERPRISE (DTE)
DENTON, TEXAS

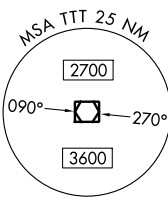
MAVERICK
113.1 TTT
Chan 78

WICHITA FALLS
112.7 SPS
Chan 74

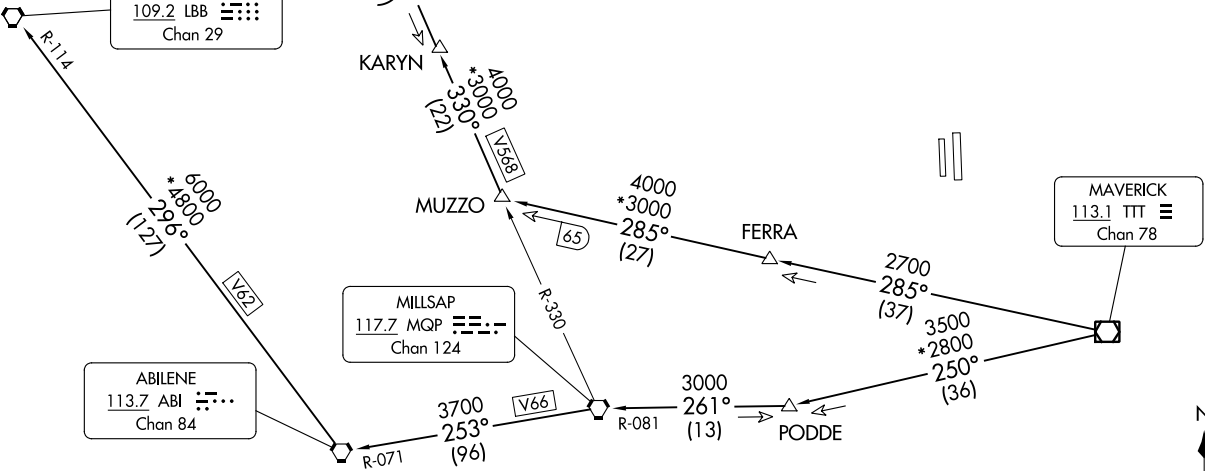
LUBBOCK
109.2 LBB
Chan 29

ABILENE
113.7 ABI
Chan 84

MILLSAP
117.7 MQP
Chan 124



- NOTE: LUBBOCK Transition: For all aircraft overflying the MQP VORTAC westbound or direct.
- NOTE: MILLSAP Transition: For all aircraft overflying the MQP VORTAC westbound or direct.
- NOTE: PODDE Transition: ATC assigned.
- NOTE: WICHITA FALLS Transition: For all aircraft landing within the Wichita Falls terminal area or overflying the SPS VORTAC.
- NOTE: For all aircraft requesting 17000 and below.



NOTE: Chart not to scale.

(CONTINUED ON FOLLOWING PAGE)

DENTON ENTERPRISE (DTE)
DENTON, TEXAS

KINGDOM FOUR DEPARTURE



DEPARTURE ROUTE DESCRIPTION

When entering controlled airspace, fly assigned heading for RADAR vectors to appropriate route. Maintain ATC assigned altitude.

LUBBOCK TRANSITION (KING4.LBB): From over TTT VOR/DME on TTT R-250 to PODDE, then on MQP R-081 to MQP VORTAC, then on MQP R-253 and ABI R-071 to ABI VORTAC, then on ABI R-296 and LBB R-114 to LBB VORTAC.

MILLSAP TRANSITION (KING4.MQP): From over TTT VOR/DME on TTT R-250 to PODDE, then on MQP R-081 to MQP VORTAC.

PODDE TRANSITION (KING4.PODDE): From over TTT VOR/DME on TTT R-250 to PODDE.

WICHITA FALLS TRANSITION (KING4.SPS): From over TTT VOR/DME on TTT R-285 to MUZZO, then on MQP R-330 and SPS R-148 to KARYN, then on SPS R-148 to SPS VORTAC.

SC-2, 22 FEB 2024 to 21 MAR 2024

SC-2, 22 FEB 2024 to 21 MAR 2024