

SNSFT FOUR DEPARTURE (RNAV)
(SNSFT4.SNSFT) 31MAR16

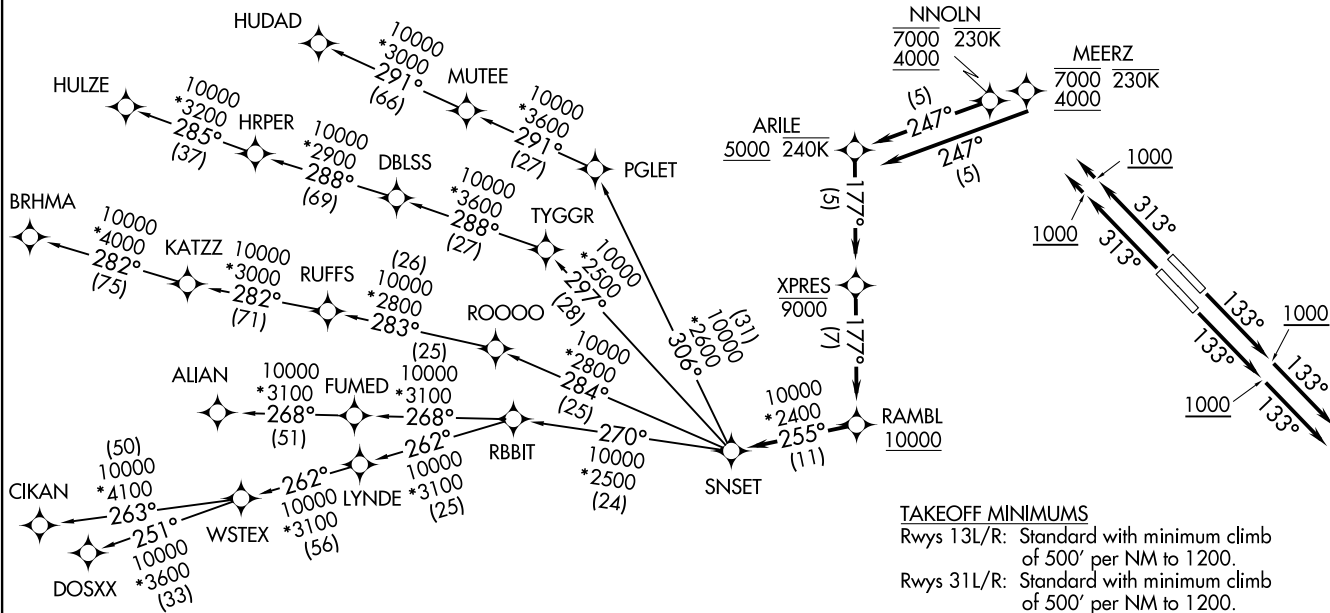
DALLAS, TEXAS
DALLAS LOVE FLD (DAL)

D-ATIS
120.15
CLNC DEL
127.9
CPDLC
GND CON
121.75 348.6
LOVE TOWER
123.7 239.3
REGIONAL DEP CON
126.475 363.15



NOTE: RADAR required.
NOTE: DME/DME/IRU or GPS required.
NOTE: RNAV 1.
NOTE: For use by turbojet aircraft only.
NOTE: RNAV-capable props: File and expect the SWABR RNAV SID.
NOTE: ALIAN TRANSITION: ATC assigned only.
NOTE: Aircraft landing in Lubbock terminal area file the BRHMA enroute transition.

TOP ALTITUDE:
RWYS 13L/R: 3000
RWYS 31L/R: 10000



(NARRATIVE ON FOLLOWING PAGE)
(NOTES CONTINUED ON FOLLOWING PAGE)

NOTE: Chart not to scale.

(SNSFT4.SNSFT) 21112
SNSFT FOUR DEPARTURE (RNAV)

AL-106 (FAA)

DALLAS, TEXAS
DALLAS LOVE FLD (DAL)

SNSET FOUR DEPARTURE (RNAV)



DEPARTURE ROUTE DESCRIPTION

TAKEOFF RUNWAY 13L/R: Climb heading 133° to 1000, then heading 133° or as assigned by ATC, maintain 3000, thence

. . . . expect RADAR vectors to cross RAMBL at or above 10000, then on track 255° to SNSET, then on (transition). Expect filed altitude 10 minutes after departure.

TAKEOFF RUNWAY 31L: Climb heading 313° to 1000, then direct to cross NNOLN at or above 4000, at or below 7000, then on track 247° to cross ARILE at or above 5000, thence

TAKEOFF RUNWAY 31R: Climb heading 313° to 1000, then direct to cross MEERZ at or above 4000, at or below 7000, then on track 247° to cross ARILE at or above 5000, thence

. . . . on track 177° to cross XPRES at or below 9000, then on track 177° to cross RAMBL at or above 10000, then on track 255° to SNSET, then on (transition). Maintain 10000. Expect filed altitude 10 minutes after departure.

ALIAN TRANSITION (SNSET4.ALIAN)

BRHMA TRANSITION (SNSET4.BRHMA)

CIKAN TRANSITION (SNSET4.CIKAN)

DOSXX TRANSITION (SNSET4.DOSXX)

HUDAD TRANSITION (SNSET4.HUDAD)

HULZE TRANSITION (SNSET4.HULZE)

WSTEX TRANSITION (SNSET4.WSTEX)

SC-2, 22 FEB 2024 to 21 MAR 2024

SC-2, 22 FEB 2024 to 21 MAR 2024