

WAAS CH 60934 W36A	APP CRS 004°	Rwy Idg TDZE Apt Elev	3800 832 835
--	------------------------	-----------------------------	---

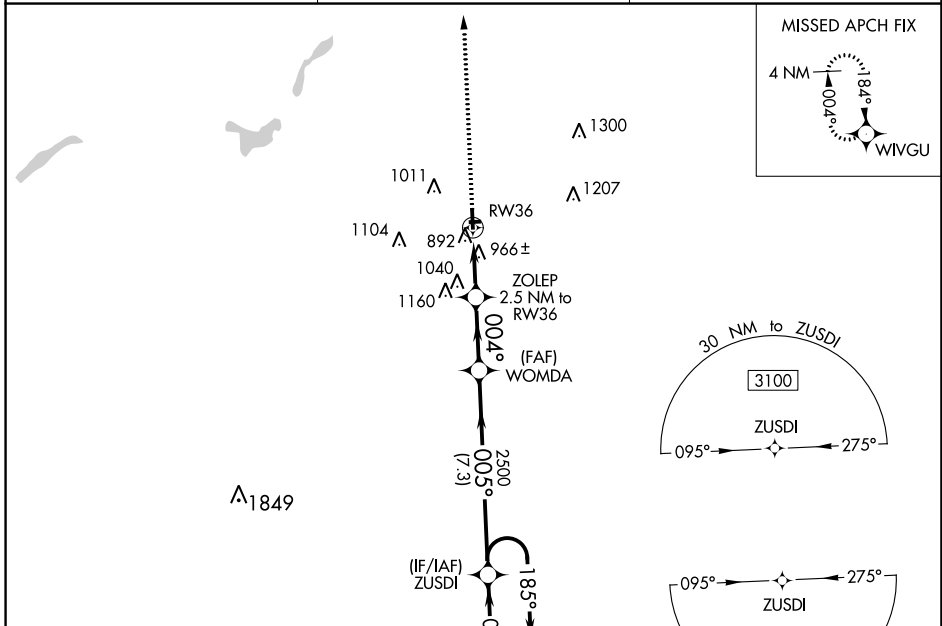
RNAV (GPS) RWY 36

DUPONT/LAPEER (D95)

▽ DME/DME RNP-0.3 NA. Helicopter visibility reduction below ¾ SM NA. When local altimeter setting not received, use Flint altimeter setting and increase all MDA 60 feet and increase LNAV Cat C visibility ½ mile and LP Cat C and Circling Cat C visibility ¼ mile. Circling NA to Rwy 9 and 27.

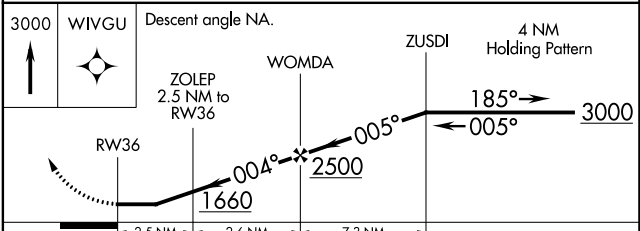
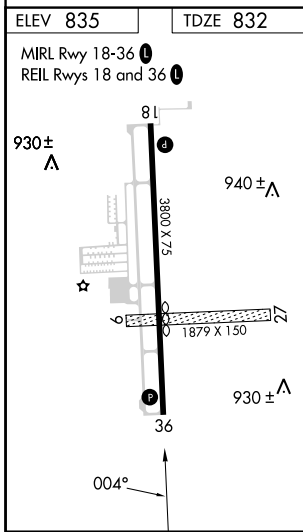
⚠ MISSED APPROACH: Climb to 3000 direct WIVGU and hold.

AWOS-3P 134.050	GREAT LAKES APP CON ★ 118.8 257.9	UNICOM 123.0 (CTAF) 0
---------------------------	---	---------------------------------



EC-1, 22 FEB 2024 to 21 MAR 2024

EC-1, 22 FEB 2024 to 21 MAR 2024



CATEGORY	A	B	C	D
LP MDA	1220-1	388 (400-1)	1220-1½ 388 (400-1½)	NA
LNAV MDA	1260-1	428 (500-1)	1260-1¼ 428 (500-1¼)	NA
☑ CIRCLING	1300-1 465 (500-1)	1380-1 545 (600-1)	1460-1¾ 625 (700-1¾)	NA