

LOC I-CKF 108.9	APP CRS 104°	Rwy Idg 5001
		TDZE 308
		Apt Elev 310

LOC RWY 10
CRISP COUNTY-CORDELE (CKF)

RNP APCH-GPS or RADAR required.

▼ Rwy 10 helicopter visibility reduction below 1 SM NA. ADF required.
▲ NA Circling Rwy 28 NA at night. When local altimeter setting not received, use Albany altimeter setting and increase all MDA 100 feet and increase S-10 Cat C/D visibility 1/8 SM and Circling Cat C/D visibility 1/4 SM. Inop table does not apply to S-10. Inop table does not apply to S-10 Cat A/B when using Albany altimeter setting. For inop ALS, when using Albany altimeter setting increase S-10 Cat C/D visibility to 1 3/8 SM.

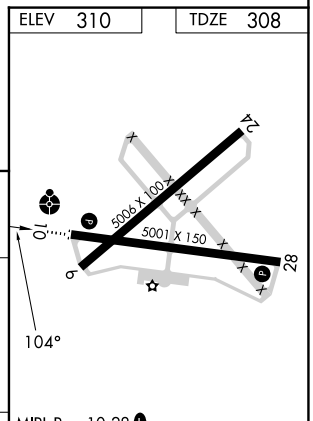
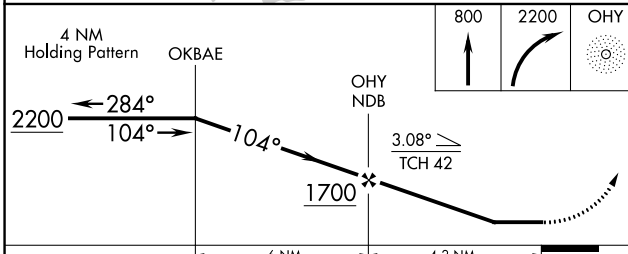
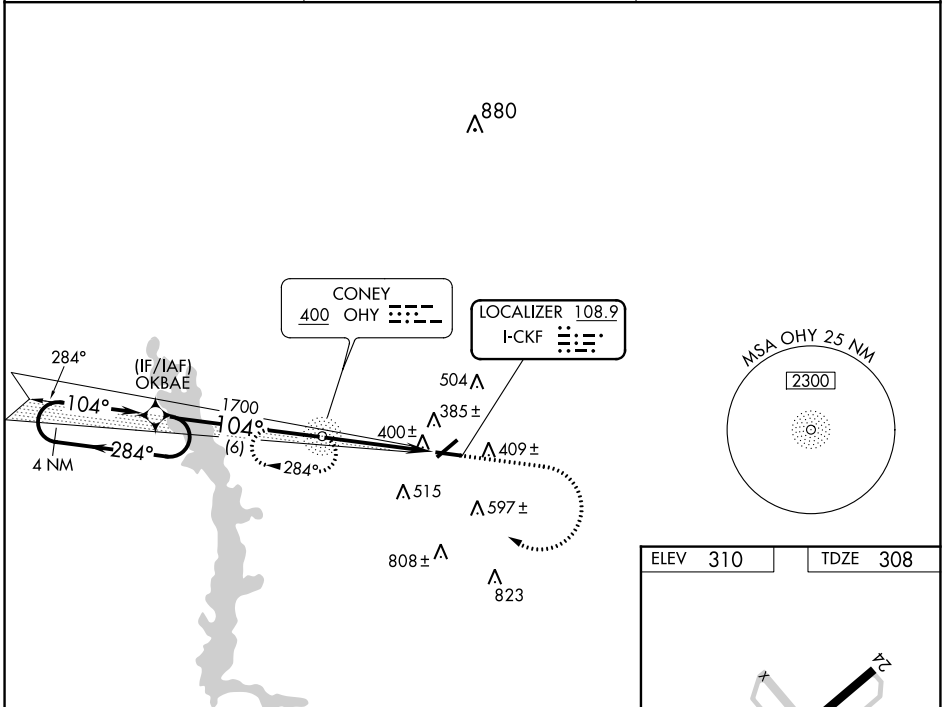


MISSED APPROACH: Climb to 800 then climbing right turn to 2200 direct OHY NDB and hold, continue climb-in-hold to 2200.

AWOS-3PT
119.325

JACKSONVILLE CENTER
125.75 363.075

UNICOM
123.050 (CTAF) 1



CATEGORY	A	B	C	D	MRL Rwy 10-28 REIL Rws 10 and 28												
S-10		660-1	352 (400-1)		FAF to MAP 4.2 NM												
C CIRCLING	820-1	510 (600-1)	1080-2 1/4 770 (800-2 1/4)	1160-2 3/4 850 (900-2 3/4)	<table border="1"> <tr> <td>Knots</td> <td>60</td> <td>90</td> <td>120</td> <td>150</td> <td>180</td> </tr> <tr> <td>Min:Sec</td> <td>4:12</td> <td>2:48</td> <td>2:06</td> <td>1:41</td> <td>1:24</td> </tr> </table>	Knots	60	90	120	150	180	Min:Sec	4:12	2:48	2:06	1:41	1:24
Knots	60	90	120	150	180												
Min:Sec	4:12	2:48	2:06	1:41	1:24												

SE-4, 22 FEB 2024 to 21 MAR 2024

SE-4, 22 FEB 2024 to 21 MAR 2024