

ASOS
135.625
DENVER CENTER
118.575 348.7
CTAF
122.8

TAKEOFF OBSTACLE NOTES

Rwy 3: Bush 298' from DER, 247' right of centerline, 2' AGL/5921' MSL.
Vehicle on road 547' from DER, 462' left of centerline, 15' AGL/5934' MSL.
Vent on building 900' from DER, 566' left of centerline, 16' AGL/5935' MSL.
Trees beginning 966' from DER, 327' left of centerline, up to 57' AGL/6196' MSL.
Poles beginning 1160' from DER, 518' left of centerline, up to 81' AGL/6080' MSL.

Rwy 21: Bushes beginning 153' from DER, 237' left of centerline, up to 10' AGL/6049' MSL.
Trees beginning 1902' from DER, 422' left of centerline, up to 64' AGL/5983' MSL.
OL on pole 4573' from DER, 493' left of centerline, 26' AGL/6045' MSL.

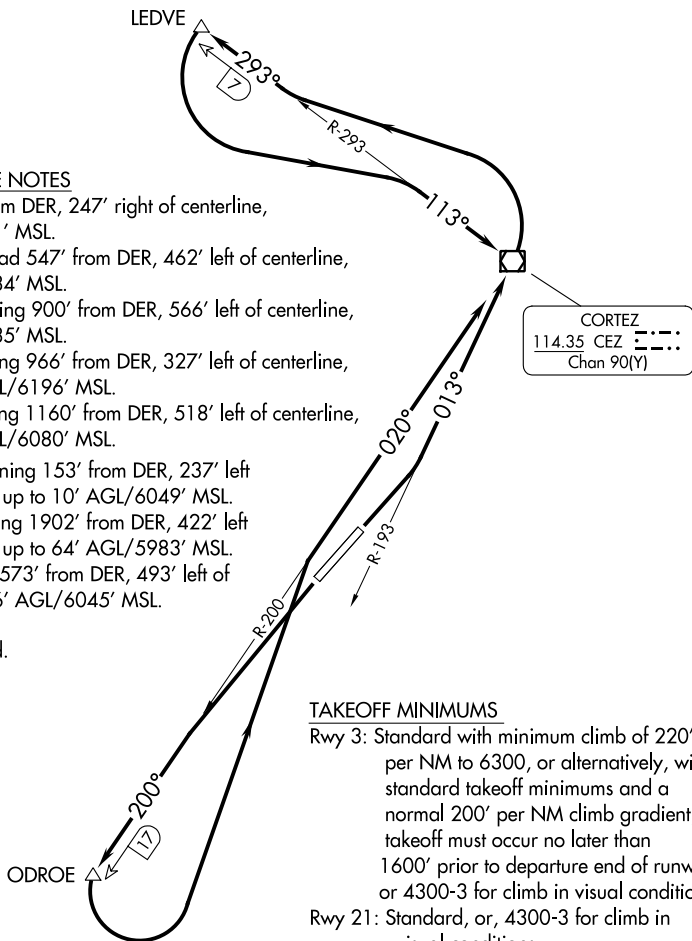
NOTE: DME required.

TAKEOFF MINIMUMS

Rwy 3: Standard with minimum climb of 220' per NM to 6300, or alternatively, with standard takeoff minimums and a normal 200' per NM climb gradient, takeoff must occur no later than 1600' prior to departure end of runway, or 4300-3 for climb in visual conditions.

Rwy 21: Standard, or, 4300-3 for climb in visual conditions.

NOTE: Chart not to scale.



DEPARTURE ROUTE DESCRIPTION

TAKEOFF RUNWAY 3: Climbing left turn to 7000 on CEZ R-193 to CEZ VOR/DME. Continue climbing left turn to 8400 on CEZ R-293 to LEDVE/CEZ 7 DME, then climbing left turn to 9800 on CEZ R-293 to CEZ VOR/DME. Cross CEZ VOR/DME at or above 9800 for route of flight, or, for climb in visual conditions, cross Cortez Muni at or above 10100. Thence. . .

TAKEOFF RUNWAY 21: Climbing left turn to 7900 on CEZ R-200 to ODROE/CEZ 17 DME, then climbing left turn to 9800 on CEZ R-200 to CEZ VOR/DME. Cross CEZ VOR/DME at or above 9800 for route of flight, or, for climb in visual conditions, cross Cortez Muni at or above 10100. Thence. . .

. . . via (assigned route).

SW-1, 22 FEB 2024 to 21 MAR 2024

SW-1, 22 FEB 2024 to 21 MAR 2024