

| | | | |
|--|------------------------|-----------------------------|---|
| WAAS CH 90440 W13A | APP CRS 134° | Rwy Idg TDZE Apt Elev | 4148 669 674 |
|--|------------------------|-----------------------------|---|

RNAV (GPS) RWY 13

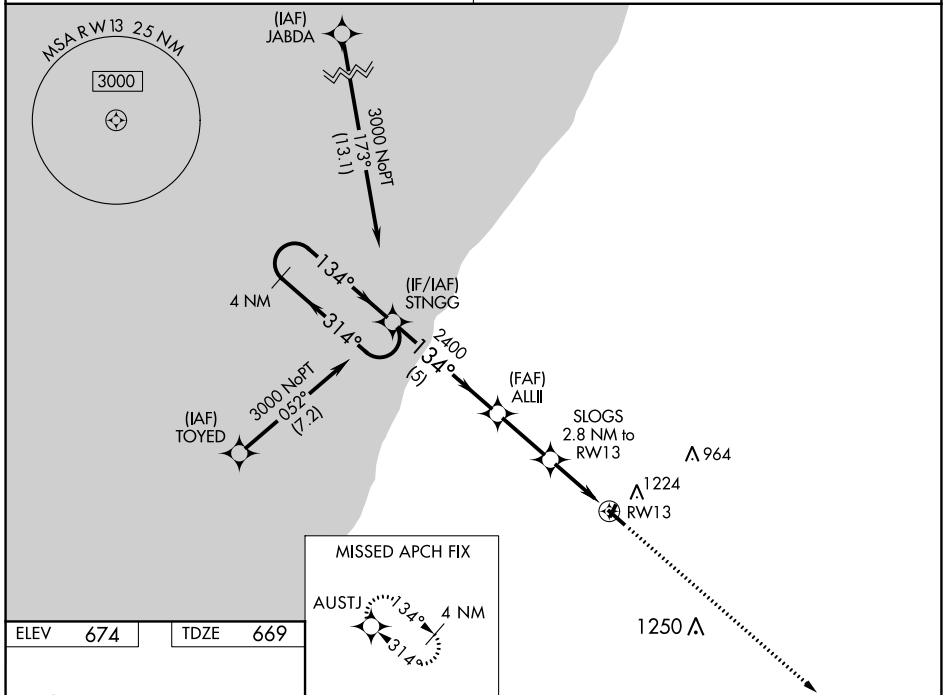
ANDREWS UNIVERSITY AIRPARK (C20)

⚠ Rwy 13 helicopter visibility reduction below 1 SM NA. DME/DME RNP-0.3 NA.
⚠ Procedure NA at night. Use Benton Harbor altimeter setting; when not received, use South Bend Int altimeter setting and increase all MDA 40 feet. Increase LP and LNAV Cats C/D visibility 1/8 SM and Circling Cats B/C 1/4 SM.

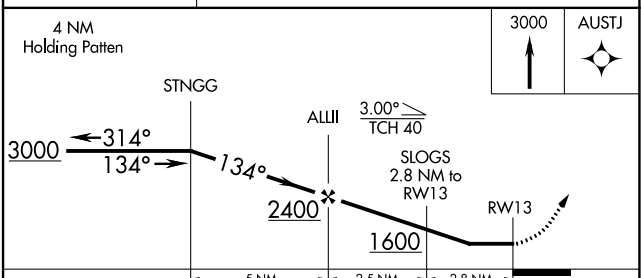
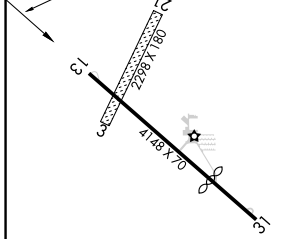
MISSED APPROACH: Climb to 3000 direct AUSTJ and hold.

SOUTH BEND APP CON * **118.55 257.8**

UNICOM **122.7 (CTAF) 0**



| | |
|----------|----------|
| ELEV 674 | TDZE 669 |
|----------|----------|



| CATEGORY | A | B | C | D |
|-------------------|---------|---------------|--------------------------|------------------------|
| LP MDA | 1100-1 | 431 (500-1) | 1100-1¼ | 431 (500-1¼) |
| LNAV MDA | 1280-1 | 611 (700-1) | 1280-1¾ | 611 (700-1¾) |
| C CIRCLING | 1620-1¼ | 946 (1000-1¼) | 1620-2¾ 946 (1000-2¾) | 1620-3 946 (1000-3) |

EC-1, 07 OCT 2021 to 04 NOV 2021

EC-1, 07 OCT 2021 to 04 NOV 2021

| | | | |
|---------------------------------|------------------------|-----------------------------|---|
| WAAS CH 42840 W31A | APP CRS 314° | Rwy Idg TDZE Apt Elev | 3019 669 674 |
|---------------------------------|------------------------|-----------------------------|---|

RNAV (GPS) RWY 31

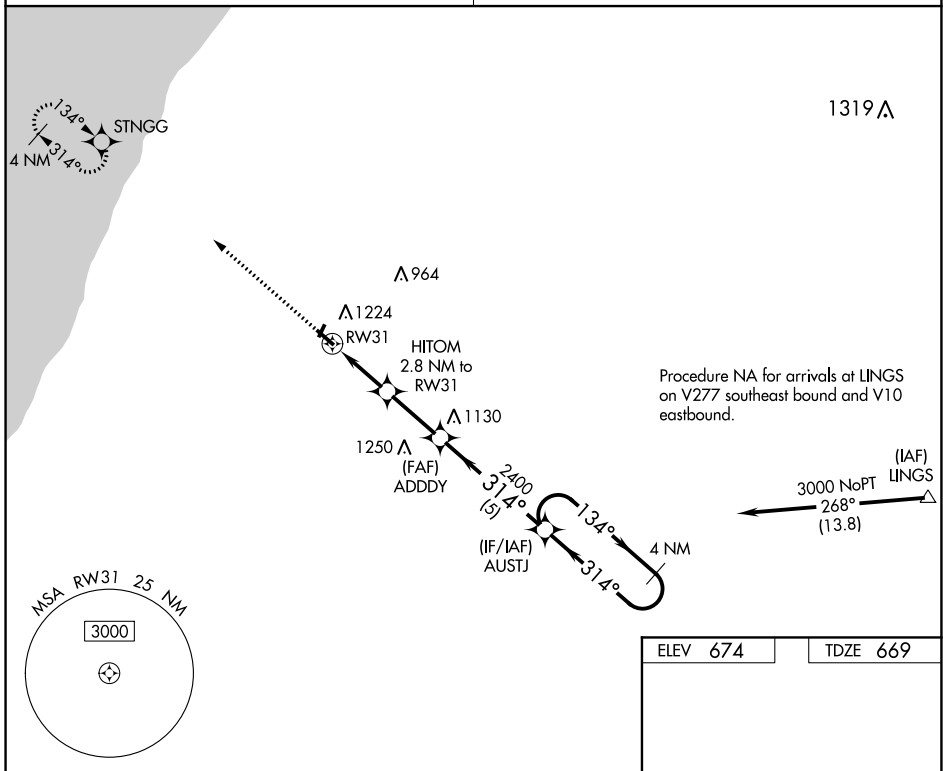
ANDREWS UNIVERSITY AIRPARK (C20)

⚠ Rwy 31 helicopter visibility reduction below 1 SM NA. DME/DME RNP-0.3 NA. Procedure NA at night. Use Benton Harbor altimeter setting; when not received, use South Bend Intl altimeter setting and increase all MDA 40 feet. Increase LP and LNAV Cats C/D visibility 1/8 SM and Circling Cats B/C 1/4 SM.

MISSED APPROACH:
Climb to 3000 direct STNGG and hold.

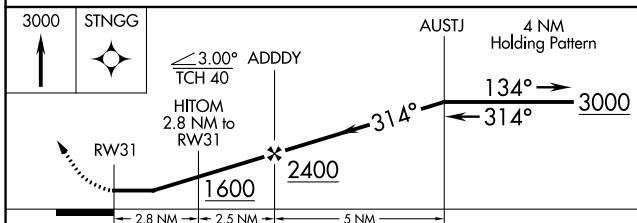
SOUTH BEND APP CON ★
118.55 257.8

UNICOM
122.7 (CTAF) 0

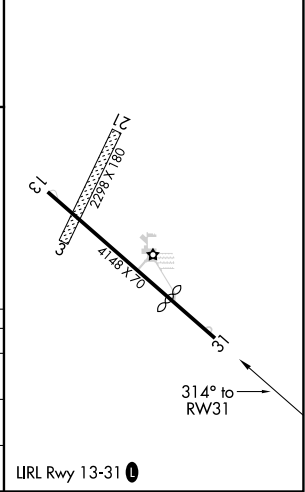


EC-1, 07 OCT 2021 to 04 NOV 2021

EC-1, 07 OCT 2021 to 04 NOV 2021



| | |
|----------|----------|
| ELEV 674 | TDZE 669 |
|----------|----------|



| CATEGORY | A | B | C | D |
|-------------------|-----------------------|---|-----------------------|---------------------|
| LP MDA | 1100-1 431 (500-1) | | 1100-1¼ 431 (500-1¼) | |
| LNAV MDA | 1160-1 491 (500-1) | | 1160-1¾ 491 (500-1¾) | |
| C CIRCLING | 1620-1¼ 946 (1000-1¼) | | 1620-2¾ 946 (1000-2¾) | 1620-3 946 (1000-3) |