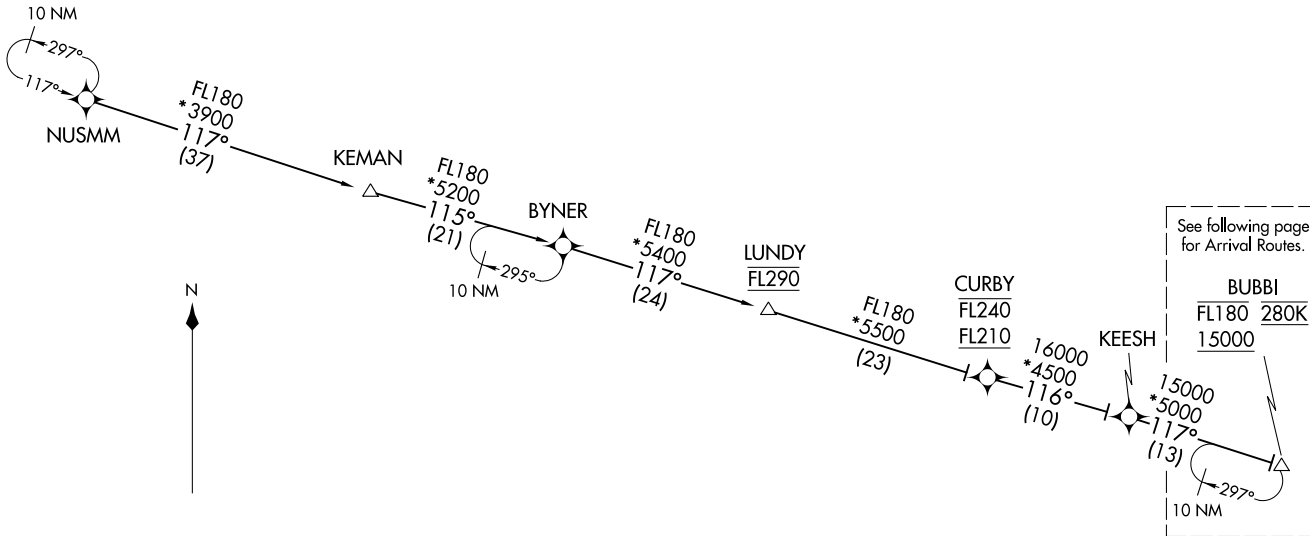


- NOTE: RADAR required
- NOTE: RNAV 1.
- NOTE: DME/DME/IRU or GPS required.
- NOTE: Turbojet aircraft only.
- NOTE: Prohibited area (P56) 1.5 NM north of DCA avoid surface to 18000 MSL.
- NOTE: ARTCC will issue landing direction assignment (east or west). Potomac TRACON will issue runway assignments.

POTOMAC APP CON
 133.85 254.25
 BWI D-ATIS
 115.1 127.8

ANTHM THREE ARRIVAL (RNAV) Transition Routes
 (BUBBI.ANTHM3) 31MART6
 BALTIMORE, MARYLAND



KEESH TRANSITION (KEESH.ANTHM3)
 KEMAN TRANSITION (KEMAN.ANTHM3)
 NUSMM TRANSITION (NUSMM.ANTHM3)

(CONTINUED ON FOLLOWING PAGES)

NOTE: Chart not to scale.

(BUBBI.ANTHM3) 20198
 ANTHM THREE ARRIVAL (RNAV) Transition Routes
 AL-804 (FAA)
 BALTIMORE, MARYLAND

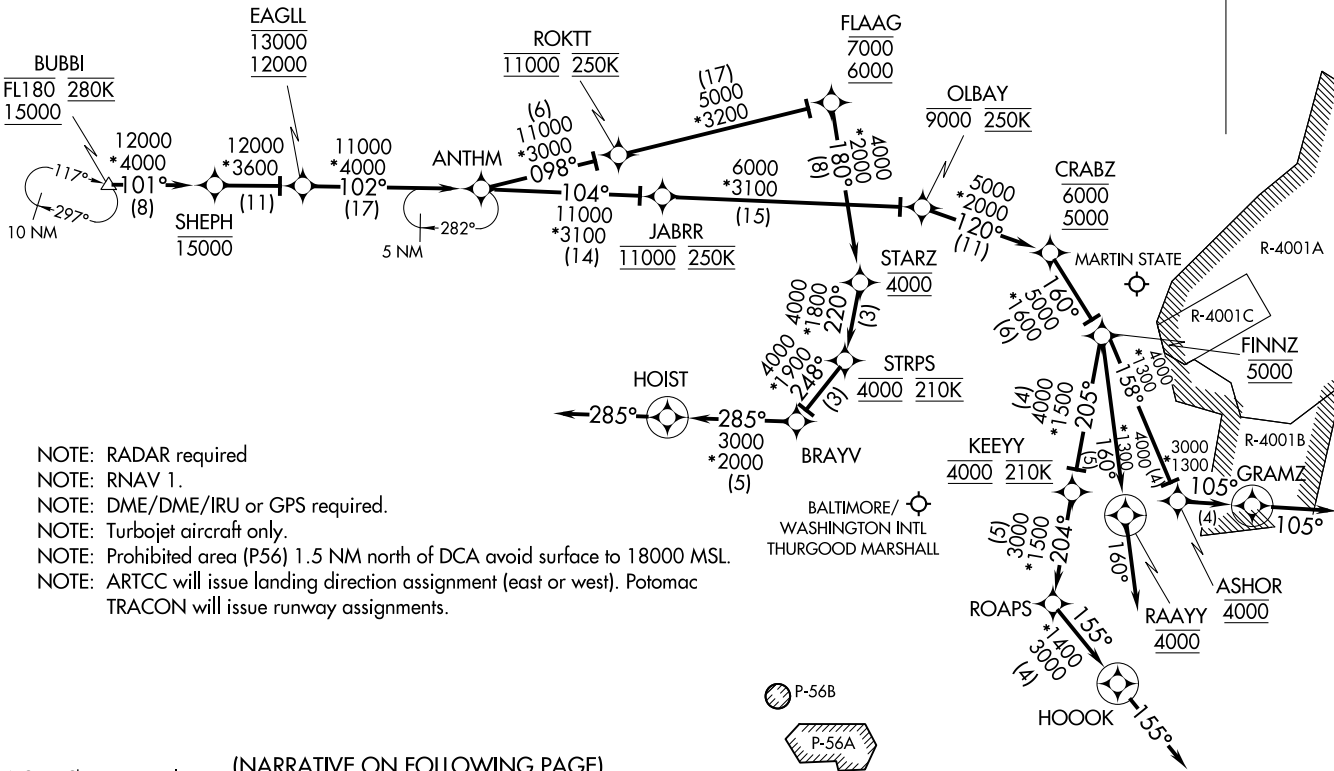
ANTHM THREE ARRIVAL (RNAV) (BUBBI,ANTHM3) 31MARI6

Arrival Routes

BALTIMORE, MARYLAND

POTOMAC APP CON
133.85 254.25
BWI D-ATIS
115.1 127.8

CAUTION: Unmarked aerostat tethered to cable within R-4001C up to 10000 MSL.



- NOTE: RADAR required
- NOTE: RNAV 1.
- NOTE: DME/DME/IRU or GPS required.
- NOTE: Turbojet aircraft only.
- NOTE: Prohibited area (P56) 1.5 NM north of DCA avoid surface to 18000 MSL.
- NOTE: ARTCC will issue landing direction assignment (east or west). Potomac TRACON will issue runway assignments.

(NARRATIVE ON FOLLOWING PAGE)

NOTE: Chart not to scale.

(BUBBI,ANTHM3) 20198

Arrival Routes

BALTIMORE, MARYLAND

AL-804 (FAA)