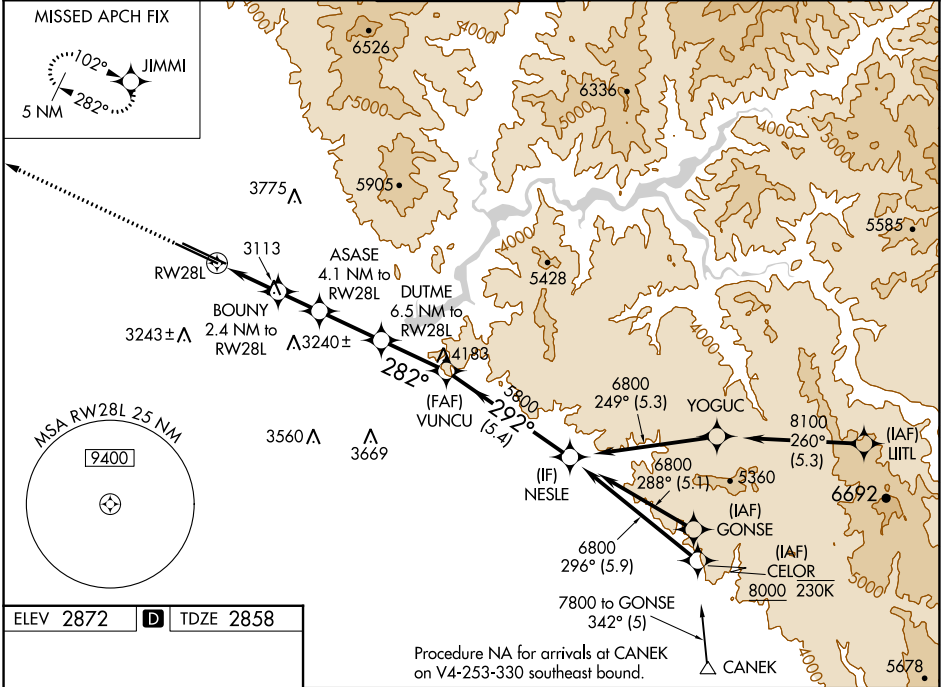


WAAS CH <b>7702</b> <b>W28A</b>	APP CRS <b>282°</b>	Rwy Idg TDZE Apt Elev	<b>9763</b> <b>2858</b> <b>2872</b>
---------------------------------------	------------------------	-----------------------------	---

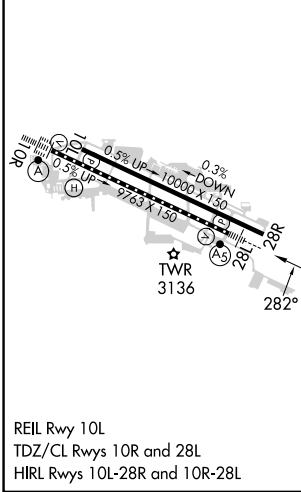
# RNAV (GPS) Y RWY 28L

BOISE AIR TRML/GOWEN FLD (BOI)

RNP APCH - GPS.		MALSR MISSED APPROACH: Climb to 6000 direct JIMMI and hold, continue climb-in-hold to 6000.		
Circling NA north of Rwy 10L-28R. For uncompensated Baro-VNAV systems, LNAV/VNAV NA below -1.4°C or above 54°C. For inop ALS, increase LPV all Cats visibility to RVR 4500, and LNAV/VNAV all Cats visibility to RVR 6000.				
D-ATIS <b>123.9 290.4</b>	BIG SKY APP CON <b>119.6 269.4</b>	<b>BOISE TOWER</b> <b>118.1 257.8</b>	GND CON <b>121.7 348.6</b>	CLNC DEL <b>125.9 323.2</b>



ELEV 2872	<b>D</b>	TDZE 2858
-----------	----------	-----------



Procedure NA for arrivals at CANEK on V4-253-330 southeast bound.

6000	JIMMI	VGSi and RNAV glidepath not coincident (VGSi Angle 3.00/TCH 50).			
		ASASE	DUTME	VUNCU	NESLE
		4.1 NM to RWY 28L	6.5 NM to RWY 28L	5800	6800
		BOUNY 2.4 NM to RWY 28L		282°	292°
		1.4 NM to RWY 28L		4980	5800
		3680	4200		
		1.4 NM	1 NM	1.6 NM	2.5 NM
				2.6 NM	5.4 NM
					GP 3.00° TCH 50
CATEGORY	A	B	C	D	
LPV DA		3160/24	302 (300-½)		
LNAV/VNAV DA		3267/40	409 (400-¾)		
LNAV MDA	3380/24	522 (600-½)	3380/55	522 (600-1)	
<b>C</b> CIRCLING	3440-1	568 (600-1)	3640-2¼ 768 (800-2¼)	3820-3 948 (1000-3)	

NW-1, 22 FEB 2024 to 21 MAR 2024

NW-1, 22 FEB 2024 to 21 MAR 2024