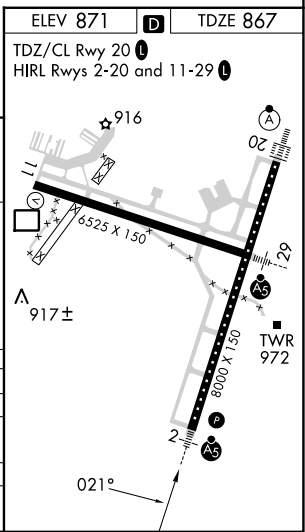
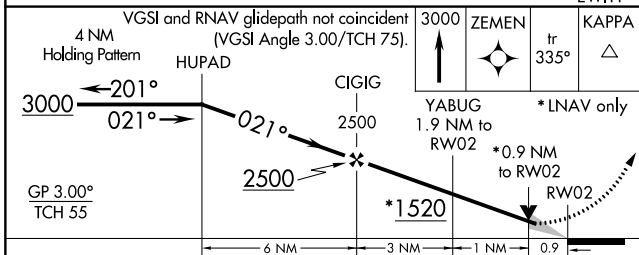
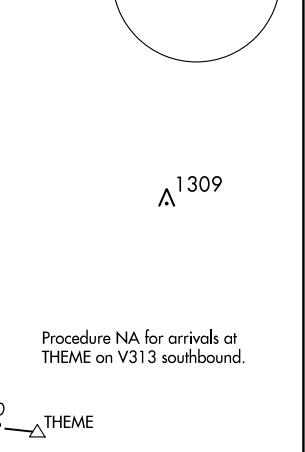
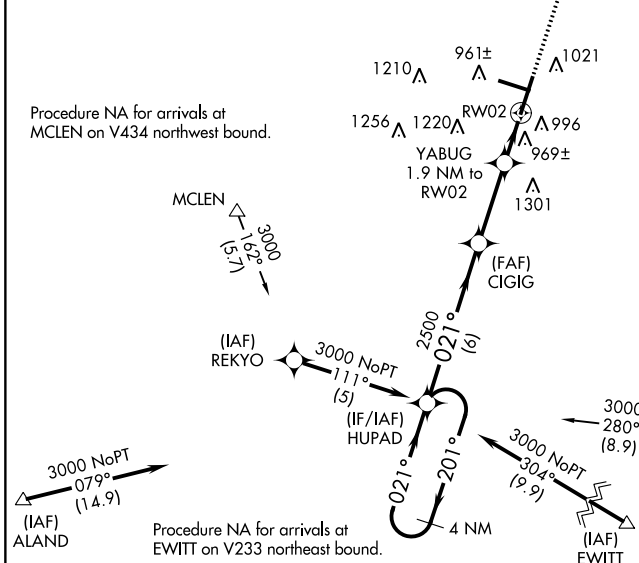
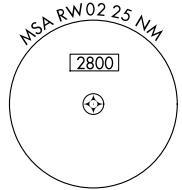
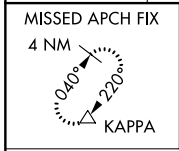


| | | |
|--|------------------------|---|
| WAAS CH 56303 W02A | APP CRS 021° | Rwy Idg 8000 TDZE 867 Apt Elev 871 |
|--|------------------------|---|

RNAV (GPS) RWY 2

CENTRAL IL RGNL/BLOOMINGTON-NORMAL (BMI)

| | | | | |
|---|---|--|--|-------------------------|
| RNP APCH. ▼ For uncompensated Baro-VNAV systems, LNAV/VNAV NA below -16°C or above 54°C. Baro-VNAV and VDP NA when using General Downing-Peoria Intl altimeter setting. When local altimeter setting not received, use General Downing-Peoria Intl altimeter setting: increase all DA 116 feet and all MDA 120 feet; increase LPV and LNAV/VNAV all Cats visibility ½ SM, LNAV Cats C/D visibility ¾ SM, and Circling all Cats visibility ¼ SM. Inop table does not apply. | | MALSR | MISSED APPROACH: Climb to 3000 direct ZEMEN then on track 335° to KAPPA and hold. | |
| ATIS 135.35 | SAINT LOUIS APP CON 128.725 256.9 | BLOOMINGTON TOWER * 124.6 (CTAF) 0 269.575 | GND CON 121.65 | UNICOM 122.95 |



| CATEGORY | A | B | C | D |
|--------------|--------|-------------|-------------------------|-------------------------|
| LPV DA | | 1214-1¼ | 347 (400-1¼) | |
| LNAV/VNAV DA | | 1269-1¼ | 402 (400-1¼) | |
| LNAV MDA | 1220-1 | 353 (400-1) | 1220-1¼ | 353 (400-1¼) |
| CIRCLING | 1340-1 | 469 (500-1) | 1620-2¼ 749 (800-2¼) | 1620-2½ 749 (800-2½) |

EC-3, 22 FEB 2024 to 21 MAR 2024

EC-3, 22 FEB 2024 to 21 MAR 2024