

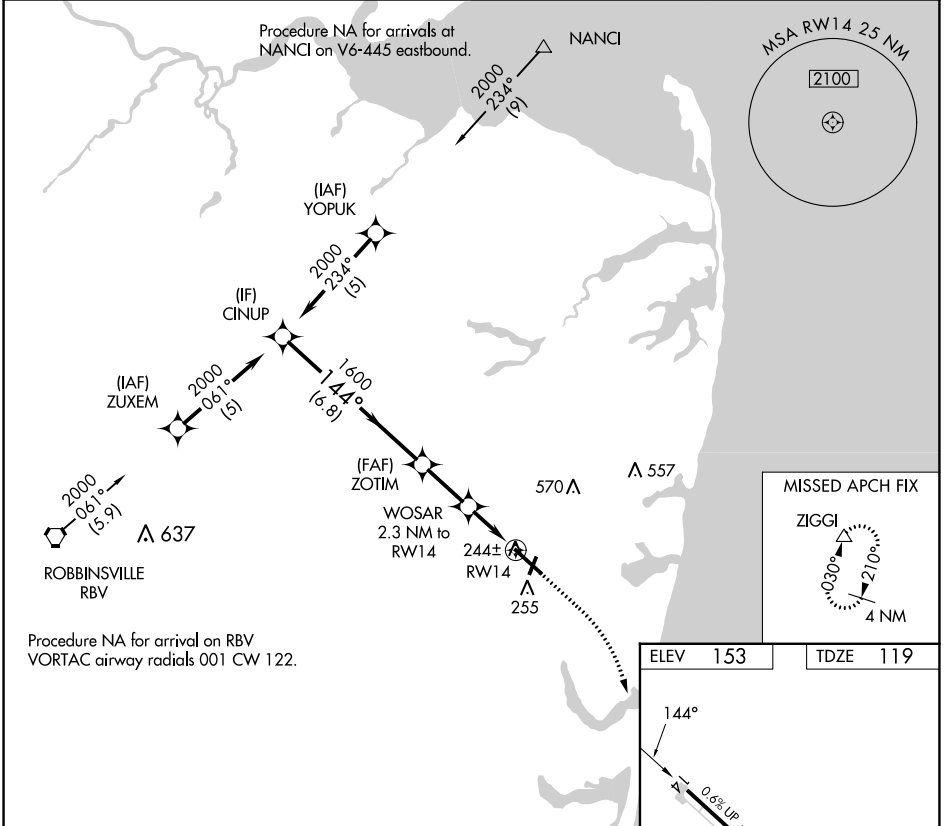
| | | |
|-------------|----------|-------------|
| APP CRS | Rwy Idg | 7345 |
| 144° | TDZE | 119 |
| | Apt Elev | 153 |

RNAV (GPS) RWY 14

MONMOUTH EXEC (BLM)

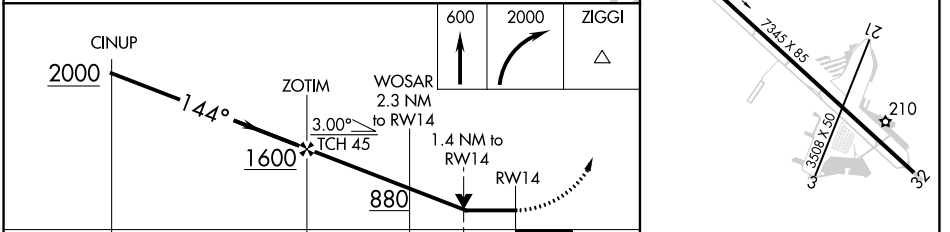
| | | |
|----------|---|--|
| RNP APCH | | MISSED APPROACH: Climb to 600 then climbing right turn to 2000 direct ZIGGI and hold. |
| ▼ ▲ | Circling Rwy 3, 21 NA at night. Rwy 14 helicopter visibility reduction below 3/4 SM NA. VDP NA when using Lakehurst altimeter setting. When local altimeter setting not received, use Lakehurst altimeter setting; increase all MDA 40 feet and LNAV Cats C/D visibility 1/8 SM and Circling Cat C/D visibility 1/4 SM. | |

| | | | |
|----------------------------|--|---------------------------|-------------------------------|
| AWOS-3PT 121.625 | MC GUIRE APP CON 126.475 363.8 | CLNC DEL 126.15 | UNICOM 123.0 (CTAF) |
|----------------------------|--|---------------------------|-------------------------------|



NE-2, 22 FEB 2024 to 21 MAR 2024

NE-2, 22 FEB 2024 to 21 MAR 2024



| | | | | |
|----------|-------------------------------|----------------------|----------------------|------------------------------|
| | ELEV 153 | | TDZE 119 | |
| CATEGORY | A | B | C | D |
| LNAV MDA | 500-1 | 381 (400-1) | 500-1 1/8 | 381 (400-1 1/8) |
| CIRCLING | 560-1 407 (500-1) | 620-1 467 (500-1) | 880-2 727 (800-2) | 880-2 1/4 727 (800-2 1/4) |
| | MIRL Rwy 14-32 REIL Rwy 14 | | | |