

| | | |
|--|------------------------|--|
| WAAS CH 53605 W24A | APP CRS 239° | Rwy Idg 10801 TDZE 641 Apt Elev 650 |
|--|------------------------|--|

RNAV (GPS) Y RWY 24

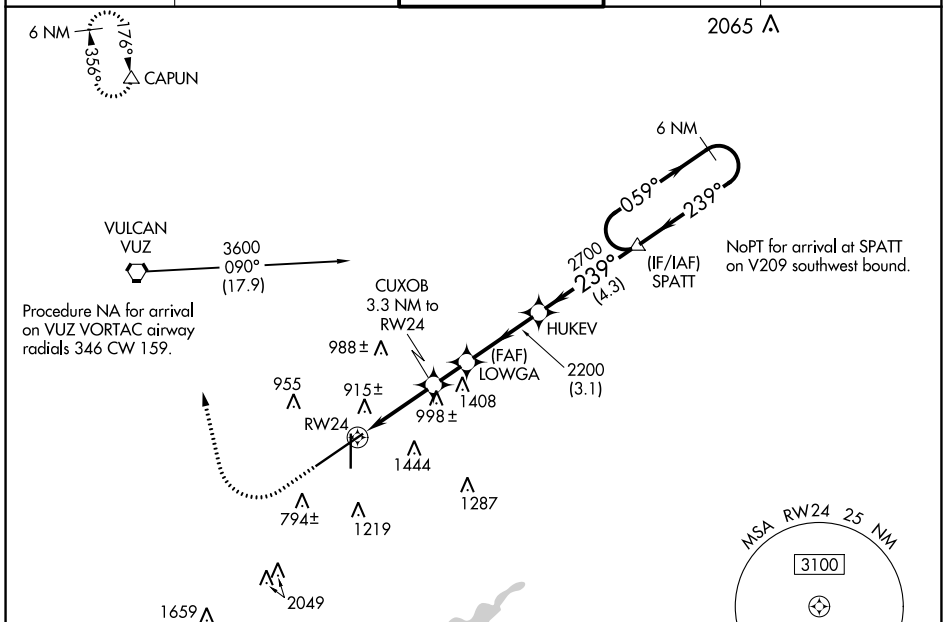
BIRMINGHAM-SHUTTLESWORTH INTL (BHM)

▼ For uncompensated Baro-VNAV systems, LNAV/VNAV NA below -8°C (18°F) or above 54°C (130°F). Rwy 24 helicopter visibility reduction below RVR 4000 NA. DME/DME RNP-0.3 NA. For inop ALS, increase LPV Cat E visibility to RVR 4000, LNAV/VNAV all Cats visibility to 1½ SM and LNAV Cat A/B visibility to RVR 5500, and Cat C/D/E to 1¼ SM. ** RVR 1800 authorized with use of FD or AP or HUD to DA.

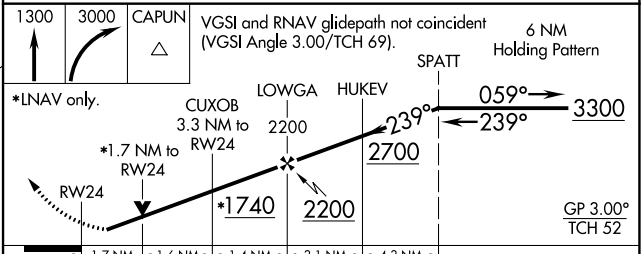
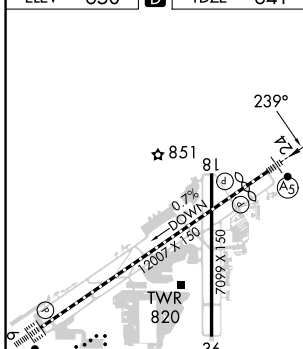


MISSED APPROACH: Climb to 1300 then climbing right turn to 3000 direct CAPUN and hold.

| | | | | |
|----------------------------|--|--|-------------------------------|----------------------------------|
| ATIS 119.4 270.1 | BIRMINGHAM APP CON 123.8 256.8 | BIRMINGHAM TOWER 119.9 317.725 | GND CON 121.7 348.6 | CLNC DEL 125.675 305.2 |
|----------------------------|--|--|-------------------------------|----------------------------------|



| | | |
|----------|----------|----------|
| ELEV 650 | D | TDZE 641 |
|----------|----------|----------|



| | | | | | |
|--------------|---------|-------------|--------------|---|--------------|
| CATEGORY | A | B | C | D | E |
| LPV DA** | 841/24 | | 200 (200-½) | | |
| LNAV/VNAV DA | 1200-1½ | | 559 (600-1½) | | |
| LNAV MDA | 1260/40 | 619 (700-¾) | 1260-1⅜ | | 619 (700-1⅜) |

SE-4, 22 FEB 2024 to 21 MAR 2024

SE-4, 22 FEB 2024 to 21 MAR 2024