

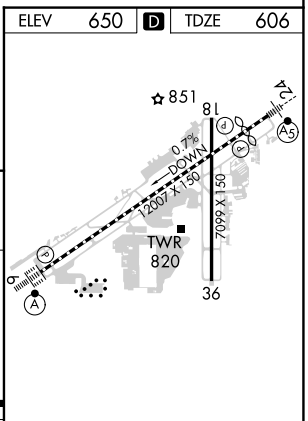
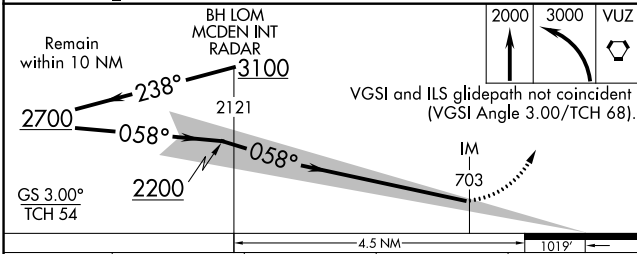
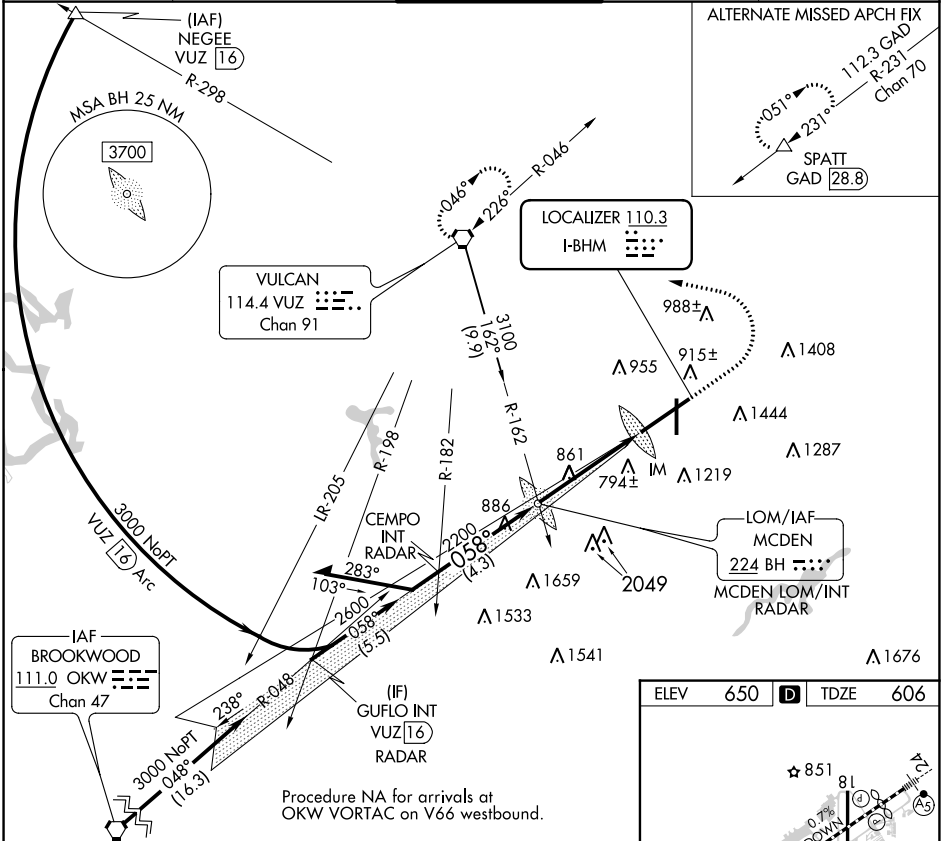
LOC I-BHM 110.3	APP CRS 058°	Rwy ldg 12007 TDZE 606 Apt Elev 650
---------------------------	------------------------	--

ILS RWY 6 (CAT II)

BIRMINGHAM-SHUTTLESWORTH INTL (BHM)

RNP APCH-GPS. From OKW VORTAC.	ALSF-2 	MISSED APPROACH: Climb to 2000 then climbing left turn to 3000 direct VUZ VORTAC and hold.
--------------------------------	------------	--

ATIS 119.4 270.1	BIRMINGHAM APP CON 123.8 256.8	BIRMINGHAM TOWER 119.9 317.725	GND CON 121.7 348.6	CLNC DEL 125.675 305.2
----------------------------	--	--	-------------------------------	----------------------------------



CATEGORY	A	B	C	D
S-ILS 6	RA 118/12 100 DA 706			

CATEGORY II ILS - SPECIAL AIRCREW & AIRCRAFT CERTIFICATION REQUIRED

REIL Rwy 18 and 36
TDZ/CL Rwy 6
HIRL Rwy 6-24
MIRL Rwy 18-36

SE-4, 22 FEB 2024 to 21 MAR 2024

SE-4, 22 FEB 2024 to 21 MAR 2024