

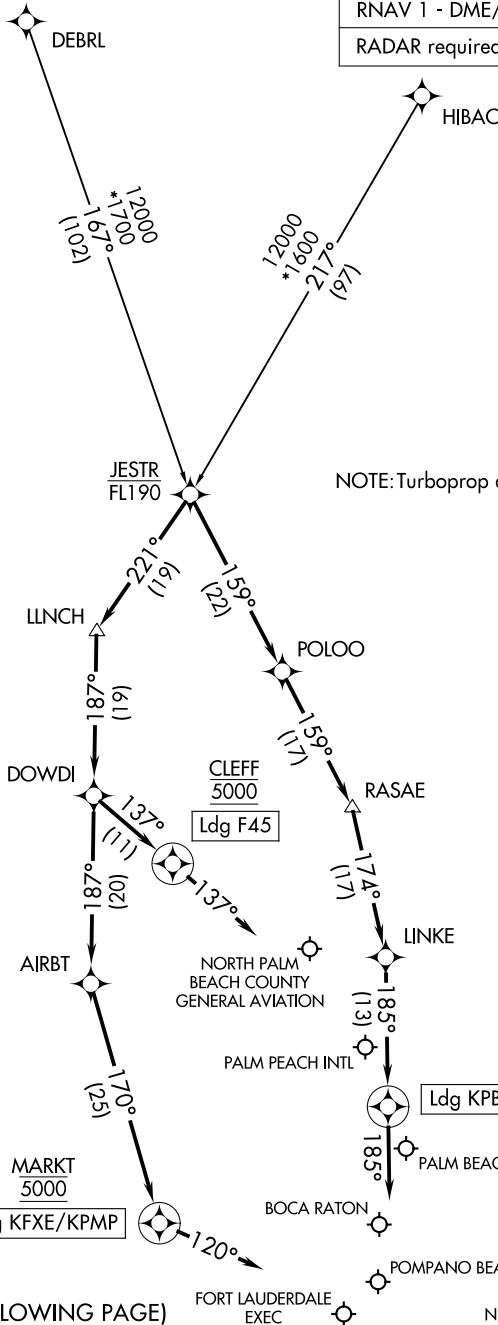
# JESTR ONE ARRIVAL (RNAV)

WEST PALM BEACH, FLORIDA

PALM BEACH APP CON  
 124.6 317.4  
 FXE ATIS  
 119.85  
 PBI D-ATIS  
 123.75  
 PMP ATIS  
 120.55

RNAV 1 - DME/DME/IRU or GPS.

RADAR required.



(NARRATIVE ON FOLLOWING PAGE)

NOTE: Chart not to scale.

# JESTR ONE ARRIVAL (RNAV)

WEST PALM BEACH, FLORIDA

ARRIVAL ROUTE DESCRIPTION

DEBRL TRANSITION (DEBRL.JESTR1)

HIBAC TRANSITION (HIBAC.JESTR1)

LANDING KPBI/KLNA/KBCT: From JESTR on track 159° to POLOO, then on track 159° to RASAE, then on track 174° to LINKE, then on track 185° to cross JESNA at 5000, then on heading 185° or as assigned by ATC. Expect RADAR vectors to final approach course.

LANDING F45: From JESTR on track 221° to LLNCH, then on track 187° to DOWDI, then on track 137° to cross CLEFF at 5000, then on track 137°. Expect RADAR vectors to final approach course.

LANDING KFXE/KPMP: From JESTR on track 221° to LLNCH, then on track 187° to DOWDI, then on track 187° to AIRBT, then on track 170° to cross MARKT at 5000, then on heading 120° or as assigned by ATC. Expect RADAR vectors to final approach course.

SE-3, 22 FEB 2024 to 21 MAR 2024

SE-3, 22 FEB 2024 to 21 MAR 2024