

LOC/DME I-PKU <b>111.75</b> Chan <b>54(Y)</b>	APP CRS <b>275°</b>	Rwy ldg TDZE Apt Elev <b>9000</b> <b>998</b> <b>1026</b>
---	------------------------	---

# ILS RWY 28 (SA CAT I)

## HARTSFIELD-JACKSON ATLANTA INTL (ATL)

RNAV 1-GPS or RADAR required for procedure entry.  
From TERII: RNAV 1-GPS required. DME or RADAR required.

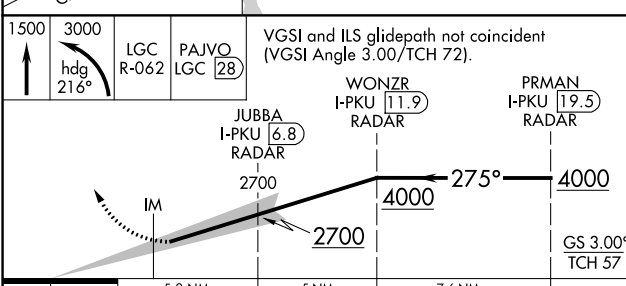
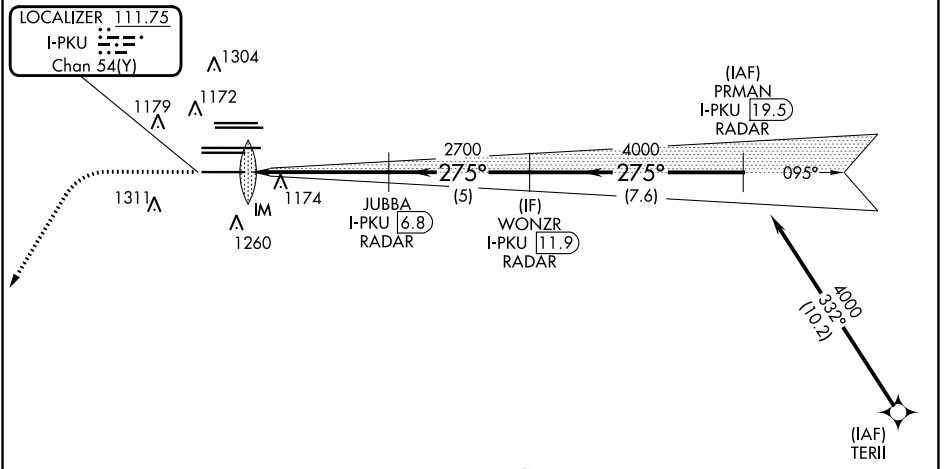
Simultaneous approach authorized.  
Requires specific OPSPEC, MSPEC, or LOA approval.

ALSIF-2

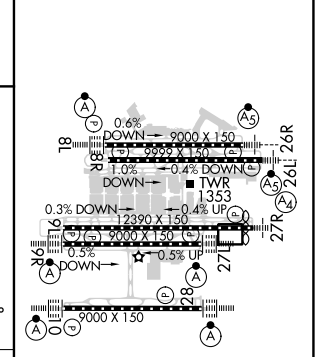
MISSED APPROACH: Climb to 1500 then climbing left turn to 3000 on heading 216° and LGC VORTAC R-062 to PAJVO/LGC 28 DME/RADAR and hold.

D-ATIS ARR <b>119.65</b>	ATLANTA APP CON APP <b>127.9 379.9</b>	ATLANTA TOWER 8L-26R 8R-26L 9L-27R 9R-27L 10-28 RWYS				ALL RWYS <b>119.3 119.5 254.4</b>	GND CON 10-28 RWYS <b>121.9 121.75 121.65 254.4</b>	ALL RWYS
-----------------------------	---	---	--	--	--	--------------------------------------	---	----------

$\Delta$ 2049 $\Delta$ 2049		CLNC DEL <b>118.1</b>	CPDLC
--------------------------------	--	--------------------------	-------



ELEV 1026	<b>D</b> TDZE 998
-----------	-------------------



CATEGORY	A	B	C	D
S-ILS 28	RA 264/14		150 DA 1148	
<b>SA CATEGORY I ILS - SPECIAL AIRCREW &amp; AIRCRAFT CERTIFICATION REQUIRED</b>				

HIRL all Rwys  
TDZ/CL Rwys 8L, 9R, 10, 26R, 27L and 28

SE-4, 22 FEB 2024 to 21 MAR 2024

SE-4, 22 FEB 2024 to 21 MAR 2024