

WIGLE THREE DEPARTURE (RNAV)

AL-26 (FAA)

ATLANTA, GEORGIA

TOP ALTITUDE:
10000

RNAV 1 - DME/DME/IRU or GPS.
RADAR required for non-GPS equipped aircraft.

D-ATIS 125.55
CLNC DEL 118.1
CPDLC

GND CON

121.9 254.4 (Rwys 8L-26R, 8R-26L)

121.75 254.4 (Rwys 9L-27R, 9R-27L)

121.65 254.4 (Rwy 10-28)

ATLANTA TOWER

119.1 254.4 (Rwy 8L-26R)

125.325 254.4 (Rwy 8R-26L)

119.3 254.4 (Rwy 9R-27L)

123.85 254.4 (Rwy 9L-27R)

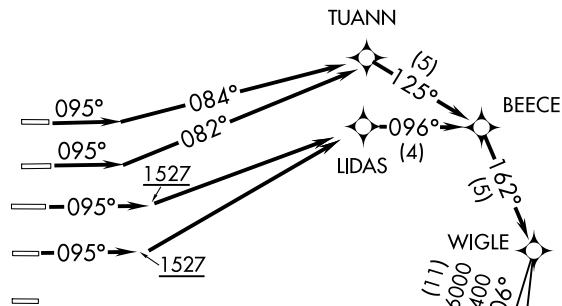
119.5 254.4 (Rwy 10-28)

ATLANTA DEP CON

133.475 281.425 (Rwys 8L-26R, 8R-26L)

125.65 281.425 (Rwys 9L-27R, 9R-27L)

121.225 281.425 (Rwy 10-28)



NOTE: If unable to accept climb rate, advise Clearance Delivery on initial contact.

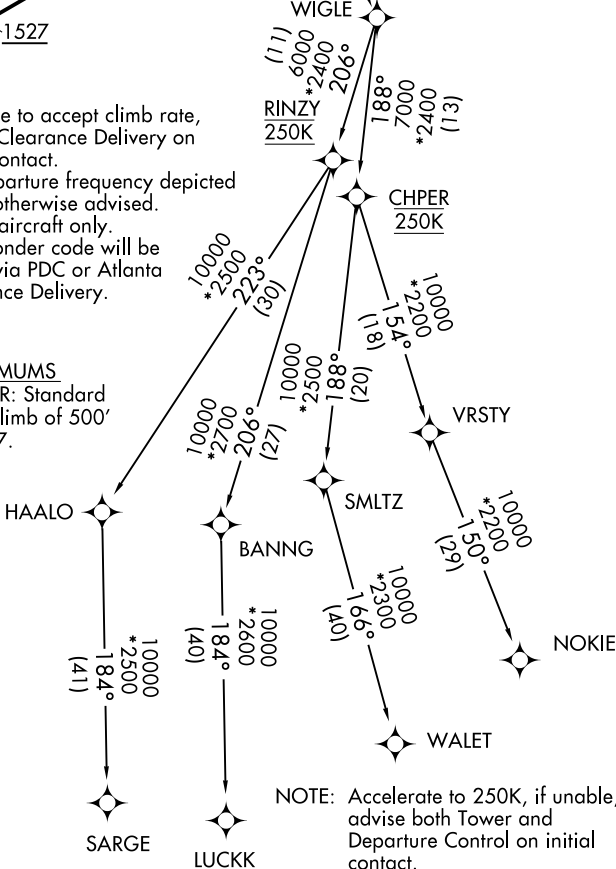
NOTE: Use departure frequency depicted unless otherwise advised.

NOTE: For Jet aircraft only.

NOTE: Transponder code will be issued via PDC or Atlanta Clearance Delivery.

TAKEOFF MINIMUMS

Rwys 8L/R, 9L/R: Standard with minimum climb of 500' per NM to 1527.



NOTE: Accelerate to 250K, if unable, advise both Tower and Departure Control on initial contact.

NOTE: Aircraft at midfield ramps will advise ramp towers of departure SID prior to pushback. Upon receipt of ATC clearance readback only your call sign and transponder code, unless you have a question.

(NARRATIVE ON FOLLOWING PAGE)

NOTE: Chart not to scale.

WIGLE THREE DEPARTURE (RNAV)

ATLANTA, GEORGIA



DEPARTURE ROUTE DESCRIPTION
SEE ADDITIONAL REQUIREMENTS ON AAUP

TAKEOFF RUNWAY 8L: Climb on heading 095° to intercept course 084° to TUANN, then on depicted route to WIGLE, thence. . . .

TAKEOFF RUNWAY 8R: Climb on heading 095° to intercept course 082° to TUANN, then on depicted route to WIGLE, thence. . . .

TAKEOFF RUNWAYS 9L/R: Climb on heading 095° to 1527, then direct LIDAS, then on depicted route to WIGLE, thence. . . .

. . . .(transition). Maintain 10000. Expect clearance to filed altitude 10 minutes after departure.

LUCKK TRANSITION (WIGLE3.LUCKK)

NOKIE TRANSITION (WIGLE3.NOKIE)

SARGE TRANSITION (WIGLE3.SARGE)

WALET TRANSITION (WIGLE3.WALET)

SE-4, 22 FEB 2024 to 21 MAR 2024

SE-4, 22 FEB 2024 to 21 MAR 2024