

KAOLN SIX DEPARTURE (RNAV)

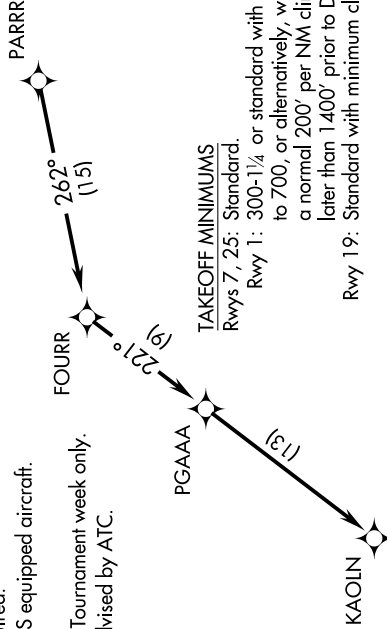
SE-2, 22 FEB 2024 to 21 MAR 2024

**TOP ALTITUDE:
ASSIGNED BY ATC**

CTAF
122.8
AUGUSTA DEP CON ★
119.15 284.625
CLINC DEL
126.075



- NOTE: DME/DME/IRU or GPS required.
- NOTE: RADAR required for non-GPS equipped aircraft.
- NOTE: RNAV 1.
- NOTE: For use during Masters Golf Tournament week only.
- NOTE: Do not exceed 250K until advised by ATC.



NOTE: Chart not to scale.

DEPARTURE ROUTE DESCRIPTION

TAKEOFF RWYS 1, 7, 19, 25: Climb on assigned heading for RADAR vectors to PARRR, then on depicted route to KAOLN. Thence. . . .

. . . . maintain altitude assigned by ATC. Expect clearance to filed altitude/flight level within 10 minutes after departure.

KAOLN SIX DEPARTURE (RNAV)

SE-2, 22 FEB 2024 to 21 MAR 2024