

WAAS CH 58331 W16A	APP CRS 166°	Rwy Idg 6400 TDZE 220 Apt Elev 220
--	------------------------	---

RNAV (GPS) RWY 16

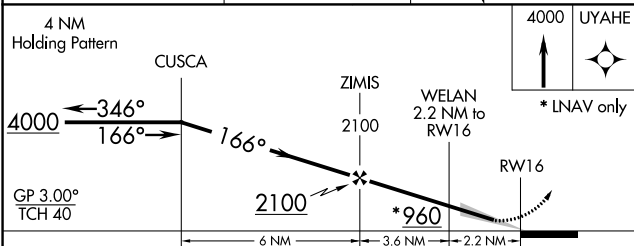
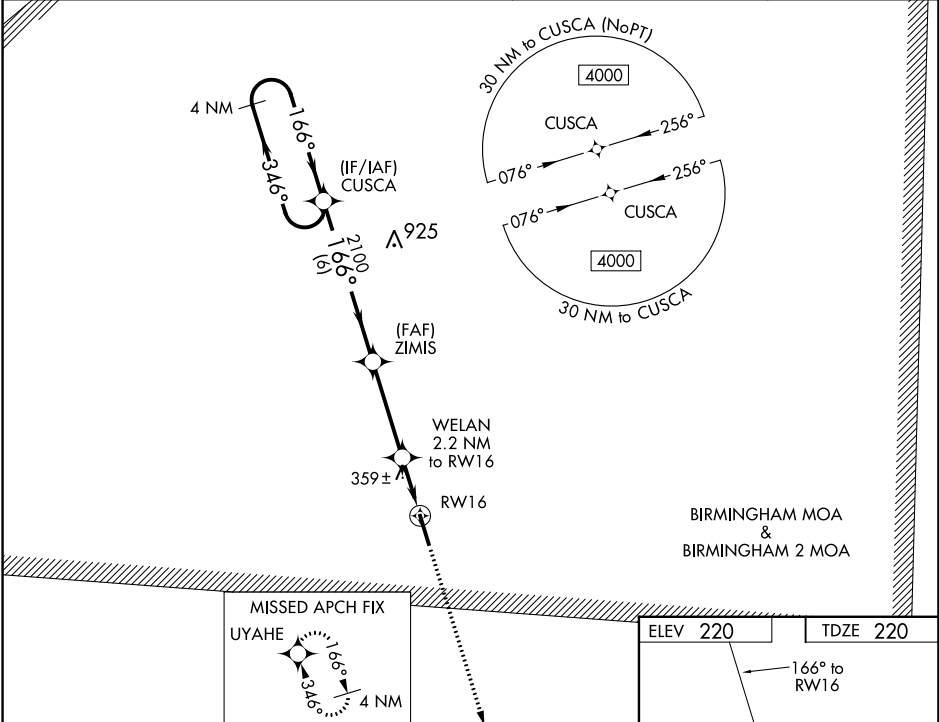
VAIDEN FLD (A08)

▽ Baro-VNAV NA. DME/DME RNP-0.3 NA. Use Demopolis altimeter setting; when not received, use Tuscaloosa altimeter setting and increase all DA 27 feet, increase all MDA 40 feet, increase all LPV and LNAV/VNAV visibilities 1/8 mile, and increase Circling Cat D visibility 1/4 mile.

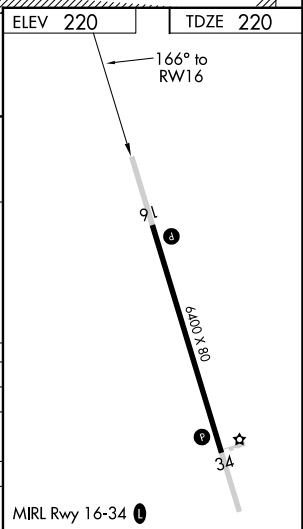
△ NA

MISSED APPROACH: Climb to 4000 direct UYAHE and hold, continue climb-in-hold to 4000.

AWOS-3P 119.350	DYA AWOS-3P 119.475	ATLANTA CENTER 132.25 263.025	CTAF 122.9 0
---------------------------	-------------------------------	---	------------------------



CATEGORY	A	B	C	D
LPV DA	552-1 1/8 332 (400-1 1/8)			
LNAV/VNAV DA	736-1 3/4 516 (600-1 3/4)			
LNAV MDA	700-1 480 (500-1)		700-1 3/8 480 (500-1 3/8)	
CIRCLING	740-1	760-1	760-1 1/2	880-2
	520 (600-1)	540 (600-1)	540 (600-1 1/2)	660 (700-2)



SE-4, 22 FEB 2024 to 21 MAR 2024

SE-4, 22 FEB 2024 to 21 MAR 2024

WAAS CH 61232 W34A	APP CRS 346°	Rwy ldg 6400 TDZE 214 Apt Elev 220
--	------------------------	---

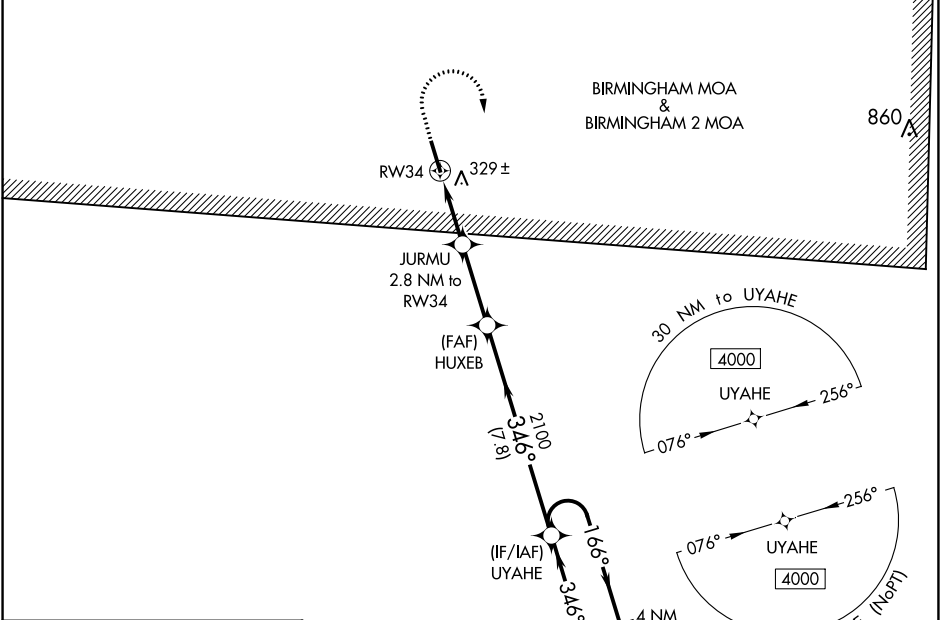
RNAV (GPS) RWY 34

VAIDEN FLD (A08)

⚠ NA Baro-VNAV NA. DME/DME RNP-0.3 NA. Use Demopolis altimeter setting; when not received, use Tuscaloosa altimeter setting and increase all DA 27 feet, increase all MDA 40 feet, increase all LPV visibilities 1/8 mile, and increase Circling Cat D visibility 1/4 mile. Helicopter visibility reduction below 3/4 SM NA.

MISSED APPROACH: Climb to 700 then climbing right turn to 4000 direct UYAHE and hold, continue climb-in-hold to 4000.

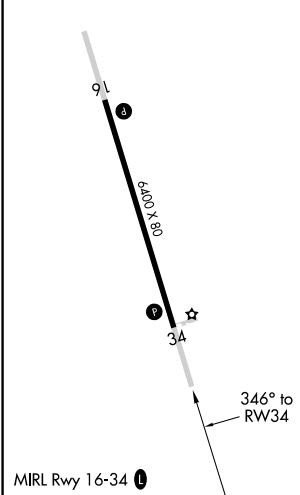
AWOS-3P 119.350	DYA AWOS-3P 119.475	ATLANTA CENTER 132.25 263.025	CTAF 122.9 0
---------------------------	-------------------------------	---	------------------------



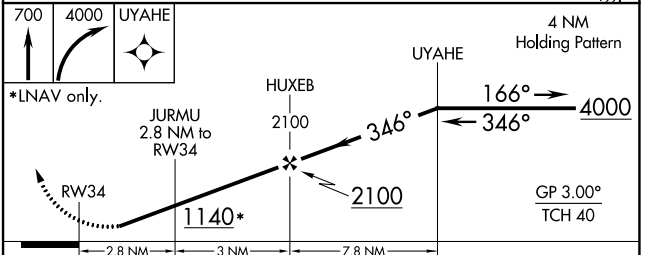
SE-4, 22 FEB 2024 to 21 MAR 2024

SE-4, 22 FEB 2024 to 21 MAR 2024

ELEV 220	TDZE 214
----------	----------



PINE HILL EAST MOA & CAMDEN RIDGE MOA



CATEGORY	A	B	C	D
LPV DA		546-1 1/8	332 (400-1 1/8)	
LNAV/VNAV DA		707-1 3/4	493 (500-1 3/4)	
LNAV MDA	660-1	446 (500-1)	660-1 3/8	446 (500-1 3/8)
CIRCLING	740-1	760-1	760-1 1/2	880-2
	520 (600-1)	540 (600-1)	540 (600-1 1/2)	660 (700-2)