

WAAS CH 78329 W14A	APP CRS 140°	Rwy Idg TDZE Apt Elev	3688 908 908
--	------------------------	-----------------------------	---

RNAV (GPS) RWY 14

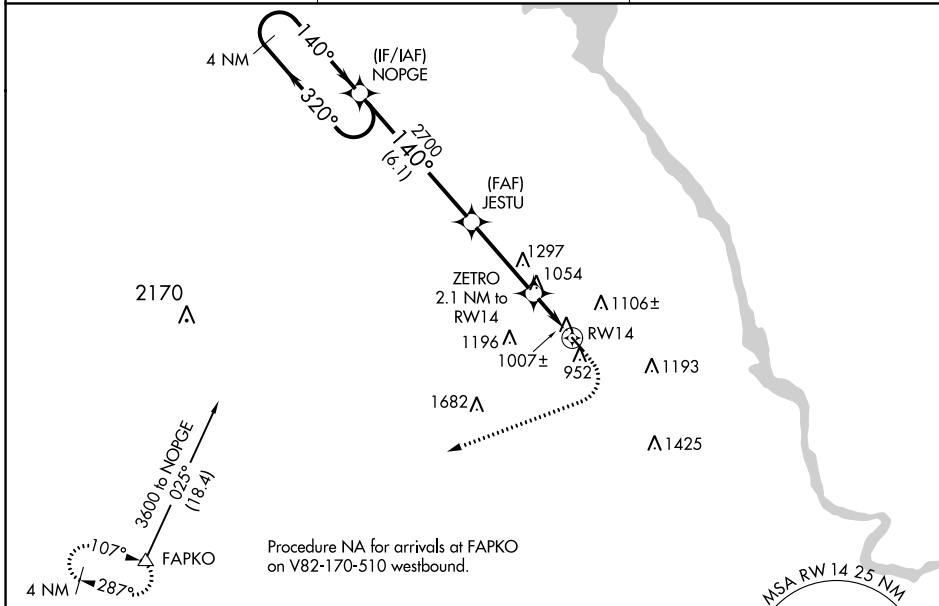
MAUSTON/NEW LISBON UNION (82C)

RNP APCH.

▼ Use Volk Field altimeter setting; when not received use Wisconsin Dells altimeter setting and increase all MDA 60 feet and all Cat C visibilities ¼ mile. Procedure NA at night. Helicopter visibility reduction below 1 SM NA.

MISSED APPROACH: Climb to 1500 then climbing right turn to 4000 direct FAPKO and hold.

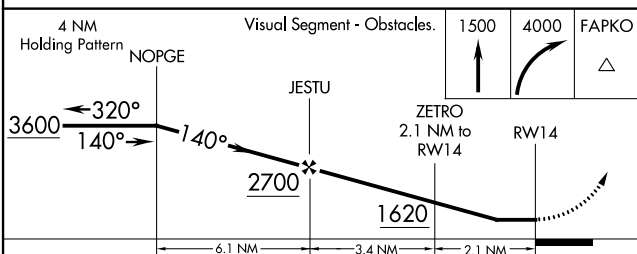
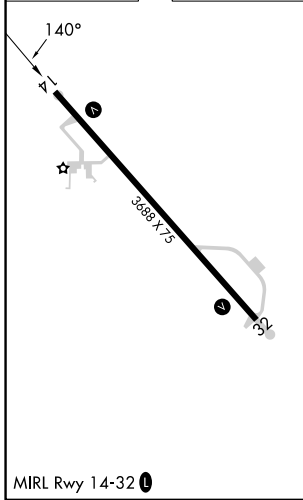
AWOS-3 123.925	VOLK APP CON ★ 135.25 244.875	CTAF 122.9
--------------------------	---	----------------------



EC-3, 22 FEB 2024 to 21 MAR 2024

EC-3, 22 FEB 2024 to 21 MAR 2024

ELEV 908	TDZE 908
----------	----------



CATEGORY	A	B	C	D
LP MDA	1280-1 372 (400-1)			NA
LNAV MDA	1340-1 432 (500-1)		1340-1¼ 432 (500-1¼)	NA

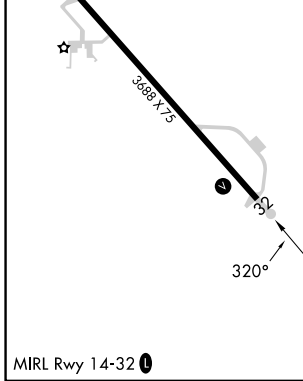
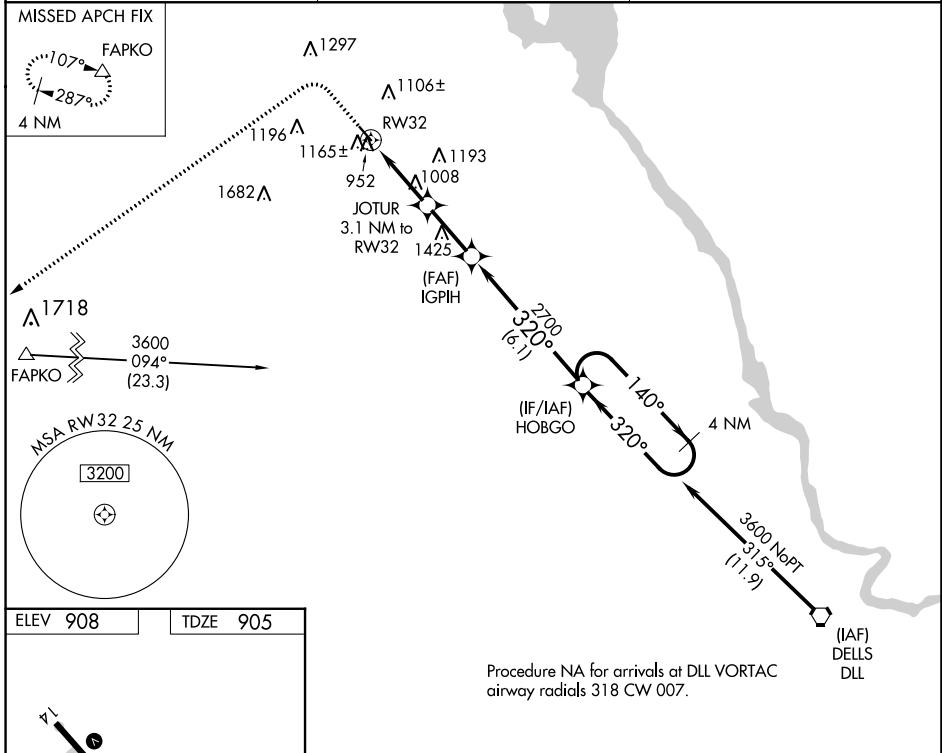
WAAS CH 49129 W32A	APP CRS 320°	Rwy Idg TDZE Apt Elev	3688 905 908
--	------------------------	-----------------------------	---

RNAV (GPS) RWY 32

MAUSTON/NEW LISBON UNION (82C)

RNP APCH.	MISSED APPROACH: Climb to 1500 then climbing left turn to 4000 direct FAPKO and hold.
<p>▼ Use Volk Field altimeter setting; when not received use Wisconsin Dells altimeter setting and increase all MDA 60 feet and all Cat C visibilities 1/4 mile. Procedure NA at night. Helicopter visibility reduction below 1 SM NA.</p>	

AWOS-3 123.925	VOLK APP CON ★ 135.25 244.875	CTAF 122.9 0
--------------------------	---	------------------------



1500	4000	FAPKO	Visual Segment - Obstacles.															
↑	↶	△																
RWY 32		JOTUR 3.1 NM to RWY 32	IGPIH															
1920		2700	HOBGO															
3.1 NM		2.4 NM	6.1 NM															
320°	320°	140°	3600															
<table border="1"> <thead> <tr> <th>CATEGORY</th> <th>A</th> <th>B</th> <th>C</th> <th>D</th> </tr> </thead> <tbody> <tr> <td>LP MDA</td> <td>1280-1</td> <td>375 (400-1)</td> <td>1280-1½ 375 (400-1½)</td> <td>NA</td> </tr> <tr> <td>LNAV MDA</td> <td>1440-1</td> <td>535 (600-1)</td> <td>1440-1½ 535 (600-1½)</td> <td>NA</td> </tr> </tbody> </table>				CATEGORY	A	B	C	D	LP MDA	1280-1	375 (400-1)	1280-1½ 375 (400-1½)	NA	LNAV MDA	1440-1	535 (600-1)	1440-1½ 535 (600-1½)	NA
CATEGORY	A	B	C	D														
LP MDA	1280-1	375 (400-1)	1280-1½ 375 (400-1½)	NA														
LNAV MDA	1440-1	535 (600-1)	1440-1½ 535 (600-1½)	NA														

EC-3, 22 FEB 2024 to 21 MAR 2024

EC-3, 22 FEB 2024 to 21 MAR 2024