

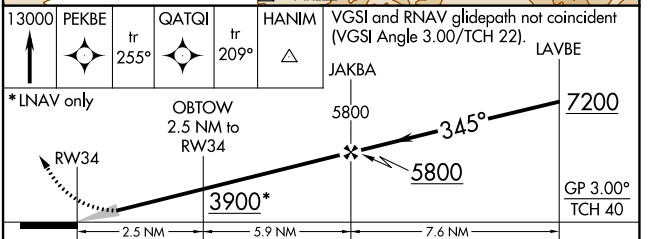
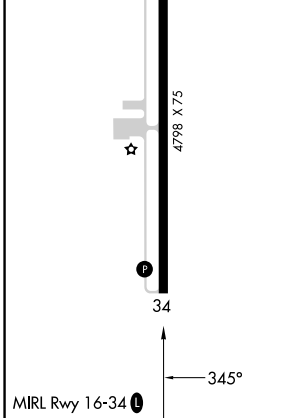
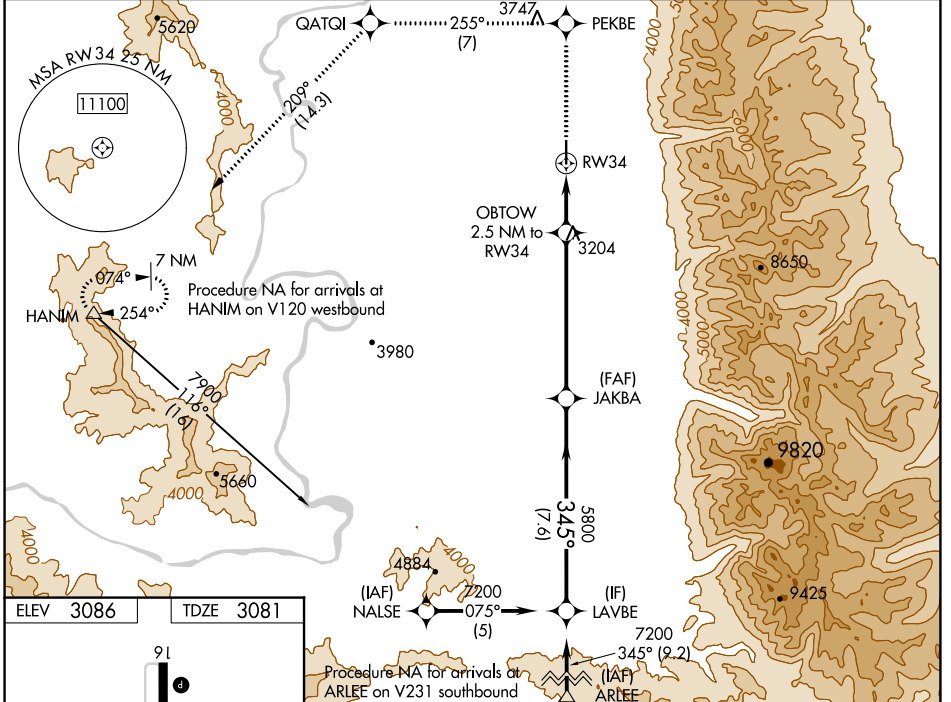
WAAS CH <b>86614</b> <b>W34A</b>	APP CRS <b>345°</b>	Rwy Idg TDZE Apt Elev	<b>4798</b> <b>3081</b> <b>3086</b>
----------------------------------------	------------------------	-----------------------------	-------------------------------------------

# RNAV (GPS) RWY 34

RONAN (7S)

RNP APCH.	MISSED APPROACH: Climb to 13000 direct PEKBE and on track 255° to QATQI and on track 209° to HANIM and hold, continue climb-in-hold to 13000.
<p>Baro-VNAV NA when using Missoula altimeter setting. For uncompensated Baro-VNAV systems, procedure NA below -21°C or above 54°C. Circling NA east of Rwy 16-34. When local altimeter setting not received, use Missoula altimeter setting and increase LPV DA to 3545 and all visibilities 3/8 SM, LNAV/VNAV DA to 3545 and all visibilities 3/8 SM; and increase all MDAs 120 feet.</p>	

AWOS-2 <b>119.925</b>	SALT LAKE CITY CENTER <b>127.075 244.875</b>	AUNICOM <b>122.8 (CTAF)</b>
--------------------------	-------------------------------------------------	--------------------------------



CATEGORY	A	B	C	D
LPV DA	3438-1 357 (400-1)			NA
LNAV/VNAV DA	3438-1 1/4 357 (400-1 1/4)			NA
LNAV MDA	3520-1 439 (500-1)			NA
<b>C</b> CIRCLING	3560-1 474 (500-1)			NA

NW-1, 22 FEB 2024 to 21 MAR 2024

NW-1, 22 FEB 2024 to 21 MAR 2024