

APP CRS	Rwy Idg	<b>3335</b>
<b>143°</b>	TDZE	<b>121</b>
	Apt Elev	<b>121</b>

# RNAV (GPS) RWY 14

NORTHAMPTON (7B2)

RNP APCH.

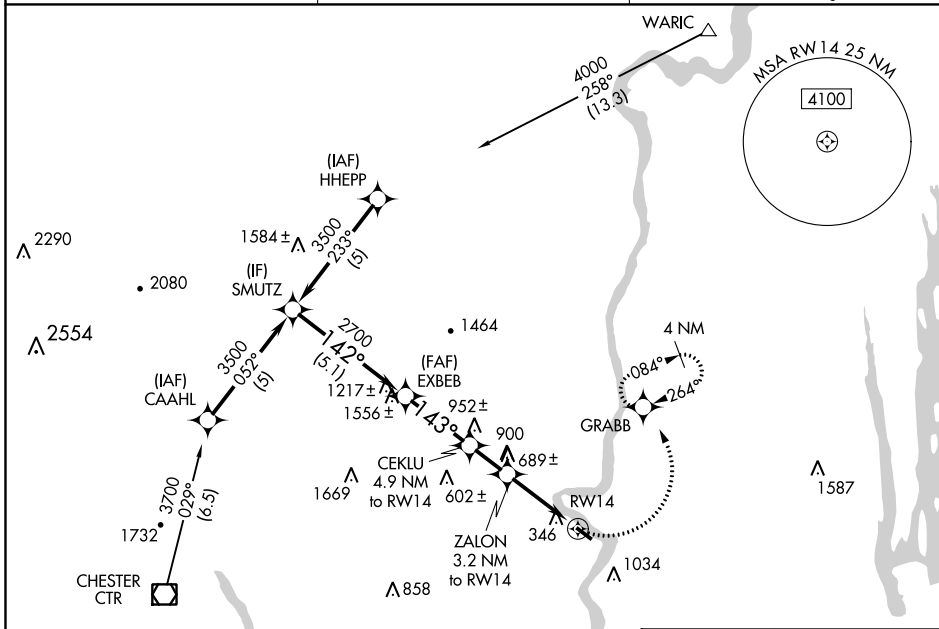
**▼** Procedure NA at night. Obtain local altimeter setting on CTAF; when not received, use Windsor Locks altimeter setting. Rwy 14 helicopter visibility reduction below 1 SM NA.

**MISSED APPROACH:** Climbing left turn to 3000 direct GRABB and hold, continue climb-in-hold to 3000.

YANKEE APP CON  
**125.35 281.5**

CLNC DEL  
**133.6**

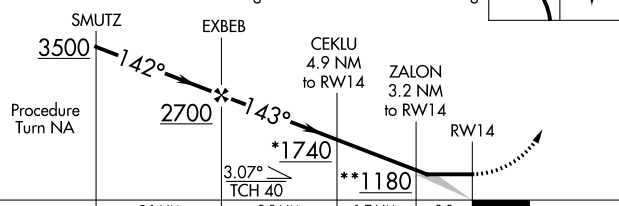
UNICOM  
**122.7 (CTAF)**



NE-1, 25 FEB 2021 to 25 MAR 2021

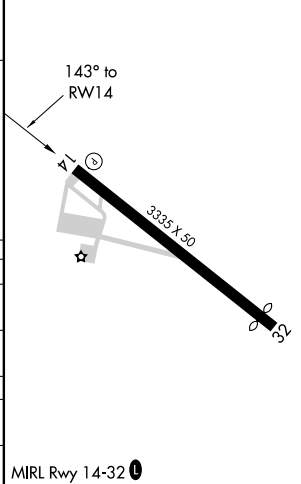
NE-1, 25 FEB 2021 to 25 MAR 2021

VGSI and descent angles not coincident (VGSI Angle 4.50/TCH 60).  
 \* 1820 when using Windsor Locks altimeter setting.  
 \*\* 1260 when using Windsor Locks altimeter setting.



ELEV	121	TDZE	121
------	-----	------	-----

CATEGORY	A	B	C	D
LNAV MDA	940-1 819 (900-1)	940-1¼ 819 (900-1¼)		NA
CIRCLING	940-1 819 (900-1)	940-1¼ 819 (900-1¼)		NA
WINDSOR LOCKS ALTIMETER SETTING MINIMUMS				
LNAV MDA	1020-1¼	899 (900-1¼)		NA
CIRCLING	1020-1¼	899 (900-1¼)		NA



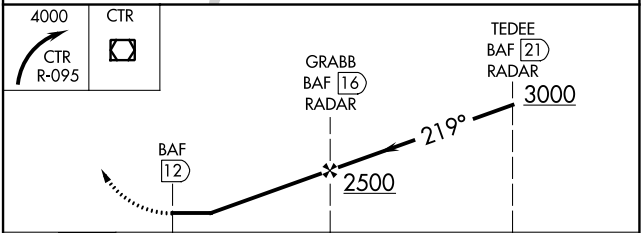
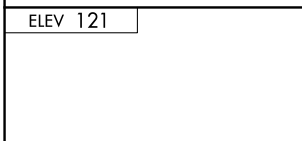
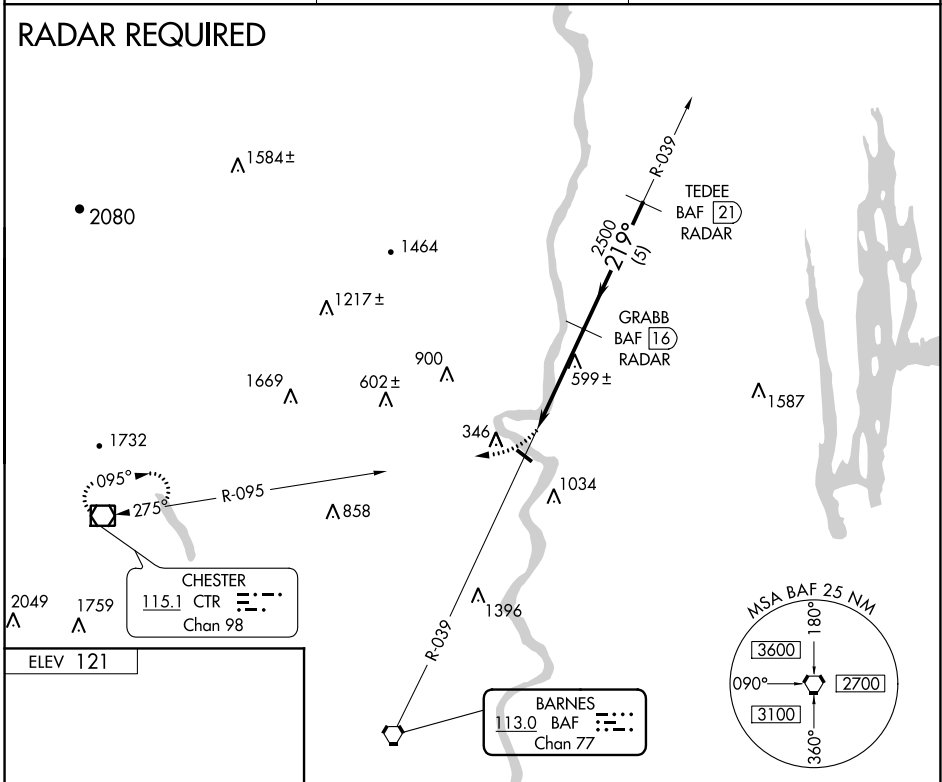
VORTAC BAF <b>113.0</b> Chan <b>77</b>	APP CRS <b>219°</b>	Rwy Idg TDZE Apt Elev <b>N/A</b> <b>N/A</b> <b>121</b>
--	------------------------	---

**VOR/DME-B**  
NORTHAMPTON (7B2)

▼ Obtain local altimeter on CTAF; when not received, use Windsor Locks altimeter setting.  
▲ NA MISSED APPROACH: Climbing right turn to 4000 via CTR R-095 to CTR VOR/DME and hold.

YANKEE APP CON <b>125.35 281.5</b>	CLNC DEL <b>133.6</b>	UNICOM <b>122.7 (CTAF) 0</b>
---------------------------------------	--------------------------	---------------------------------

**RADAR REQUIRED**



CATEGORY	A	B	C	D
CIRCLING	1300-1¼ 1179 (1200-1¼)	1300-1½ 1179 (1200-1½)	NA	
WINDSOR LOCKS ALTIMETER SETTING MINIMUMS				
CIRCLING	1360-1¼ 1239 (1300-1¼)	1360-1½ 1239 (1300-1½)	NA	

NE-1, 25 FEB 2021 to 25 MAR 2021

NE-1, 25 FEB 2021 to 25 MAR 2021