

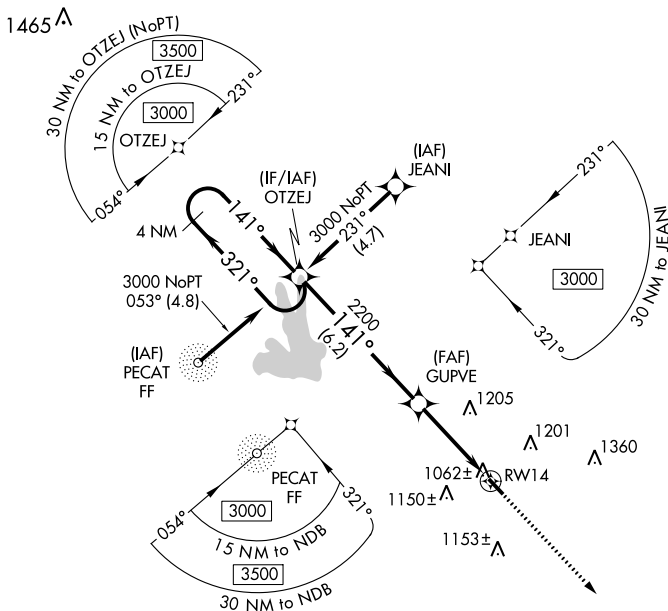
WAAS CH 70429 W14A	APP CRS 141°	Rwy Idg TDZE Apt Elev	3201 958 958
--	------------------------	-----------------------------	---

RNAV (GPS) RWY 14

GRIFFIN-SPALDING COUNTY (6A2)

RNP APCH.	When local altimeter setting not received, use Atlanta Rgnl Falcon Fld altimeter setting and increase all MDA 60 feet. Rwy 14 helicopter visibility reduction below 1 SM NA. Procedure NA at night.	MISSED APPROACH: Climb to 3000 direct LUFEV and hold.
-----------	---	---

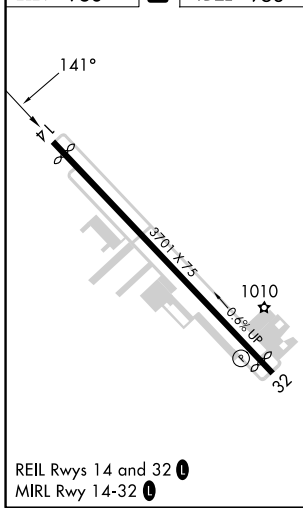
AWOS-3 119.750	ATLANTA APP CON 128.575 343.675	CLNC DEL 128.575 343.675	UNICOM 123.075 (CTAF) 0
--------------------------	---	------------------------------------	-----------------------------------



SE-4, 22 FEB 2024 to 21 MAR 2024

SE-4, 22 FEB 2024 to 21 MAR 2024

ELEV 958	D	TDZE 958
----------	----------	----------



REIL Rwy 14 and 32
MIRL Rwy 14-32

4 NM Holding Pattern	OTZEJ	Visual Segment - Obstacles.	3000	LUFEV
3000	← 321°	→ 141°	141°	GUPVE
			2200	RWY 14
			6.2 NM	3.8 NM
CATEGORY	A	B	C	D
LP MDA	1320-1	362 (400-1)	NA	
LNAV MDA	1400-1	442 (500-1)	NA	

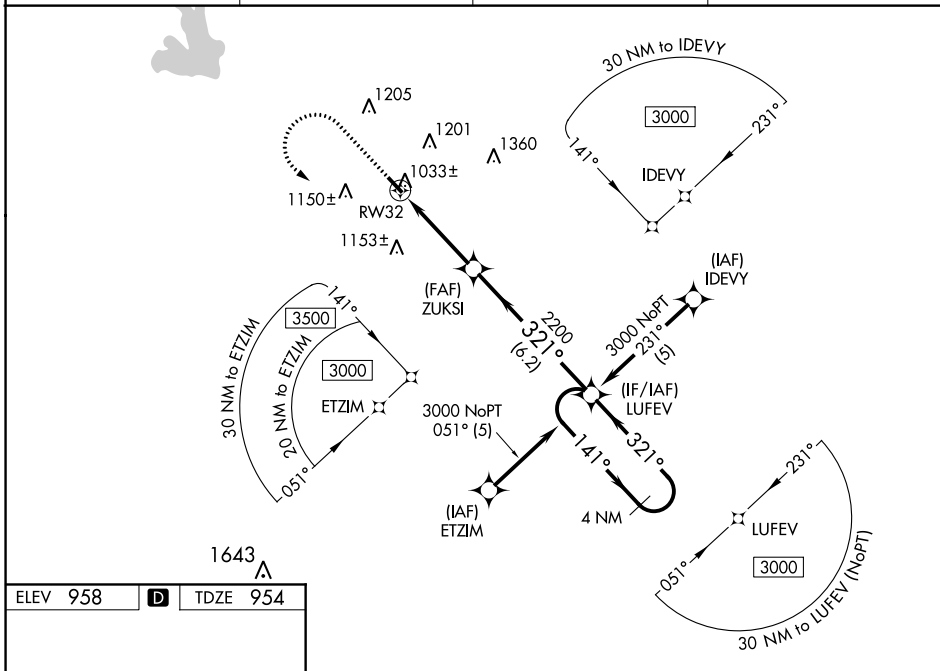
WAAS CH 65729 W32A	APP CRS 321°	Rwy Idg TDZE Apt Elev	3273 954 958
--	------------------------	-----------------------------	---

RNAV (GPS) RWY 32

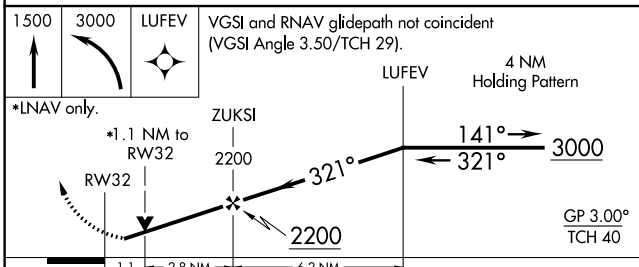
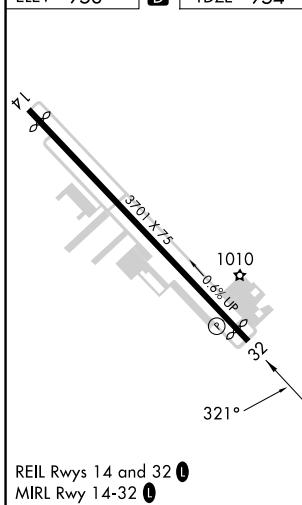
GRIFFIN-SPALDING COUNTY (6A2)

RNP APCH.	<p>For uncompensated Baro-VNAV systems, LNAV/VNAV NA below -16°C or above 54°C. Rwy 32 helicopter visibility reduction below 3/4 SM NA. Baro-VNAV and VDP NA with Atlanta Rgnl Falcon Fld altimeter setting. When local altimeter setting not received, use Atlanta Rgnl Falcon Fld altimeter setting and increase all DA/MDA 60 feet; increase LPV and LNAV/VNAV all Cats visibility 1/2 mile.</p>	MISSED APPROACH: Climb to 1500 then climbing left turn to 3000 direct LUFEV and hold.
-----------	---	---

AWOS-3 119.750	ATLANTA APP CON 128.575 343.675	CLNC DEL 128.575 343.675	UNICOM 123.075 (CTAF) 0
--------------------------	---	------------------------------------	-----------------------------------



ELEV 958	D	TDZE 954
----------	----------	----------



CATEGORY	A	B	C	D
LPV DA	1204-7/8	250 (300-7/8)		NA
LNAV/VNAV DA	1204-7/8	250 (300-7/8)		NA
LNAV MDA	1300-1	346 (400-1)		NA

SE-4, 22 FEB 2024 to 21 MAR 2024

SE-4, 22 FEB 2024 to 21 MAR 2024