

WAAS CH 63123 W10A	APP CRS 104°	Rwy ldg 5504 TDZE 1191 Apt Elev 1191
--	------------------------	---

RNAV (GPS) RWY 10

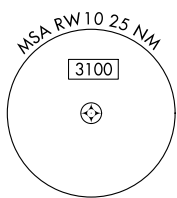
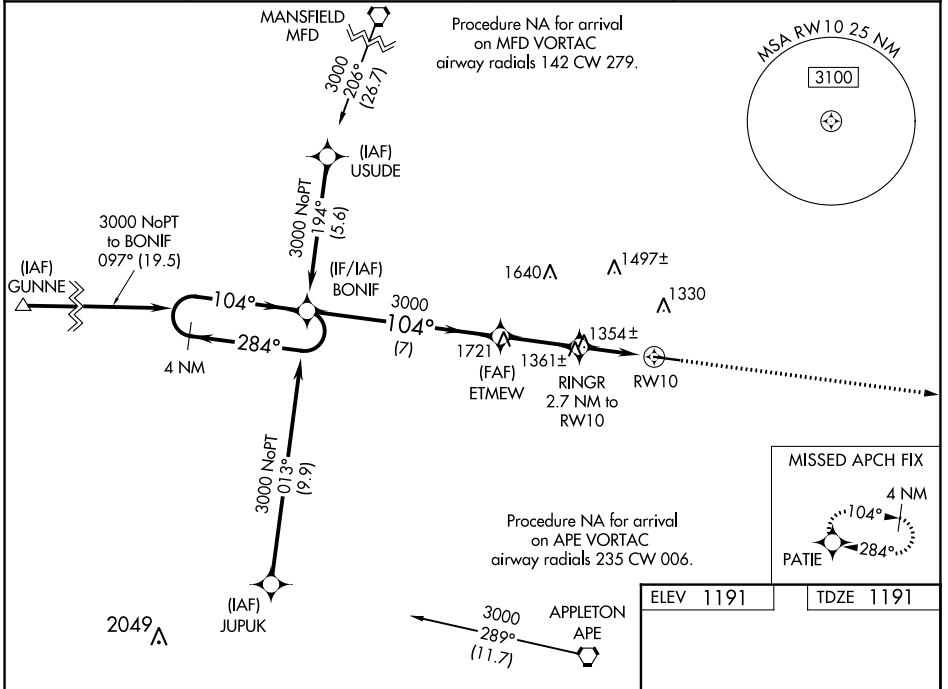
KNOX COUNTY (4I3)

RNP APCH.

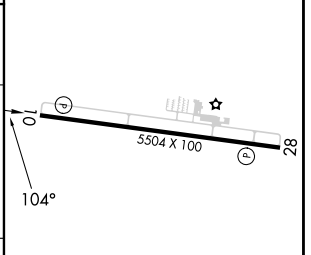
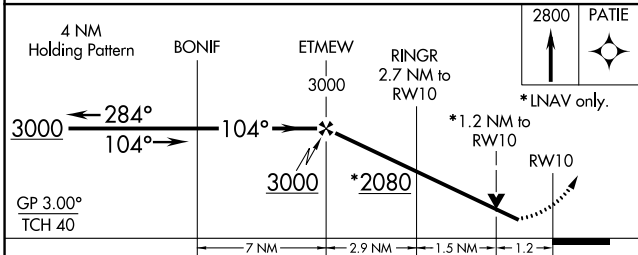
Baro-VNAV and VDP NA when using Newark altimeter setting. For uncompensated Baro-VNAV systems, LNAV/VNAV NA below -17°C (2°F) or above 36°C (96°F). When local altimeter setting not received, use Newark altimeter setting and increase all DA 86 feet and all MDA 100 feet and increase LPV all Cats, LNAV/VNAV all Cats, LNAV Cat C and D visibility ¼ mile. Rwy 10 helicopter visibility reduction below ¾ SM NA.

MISSED APPROACH: Climb to 2800 direct PATIE and hold.

AWOS-3 126.05	COLUMBUS APP CON 125.95 317.775	CLNC DEL 119.45	UNICOM 123.05 (CTAF)
-------------------------	---	---------------------------	--------------------------------



ELEV 1191	TDZE 1191
-----------	-----------



CATEGORY	A	B	C	D
LPV DA		1520-1 1/8	329 (400-1 1/8)	
LNAV/VNAV DA		1516-1 1/8	325 (400-1 1/8)	
LNAV MDA	1620-1	429 (500-1)	1620-1 1/4	429 (500-1 1/4)

MIRL Rwy 10-28

REIL Rwy 10 and 28

EC-2, 22 FEB 2024 to 21 MAR 2024

EC-2, 22 FEB 2024 to 21 MAR 2024