

APP CRS	Rwy Idg	4000
174°	TDZE	247
	Apt Elev	248

RNAV (GPS) RWY 17

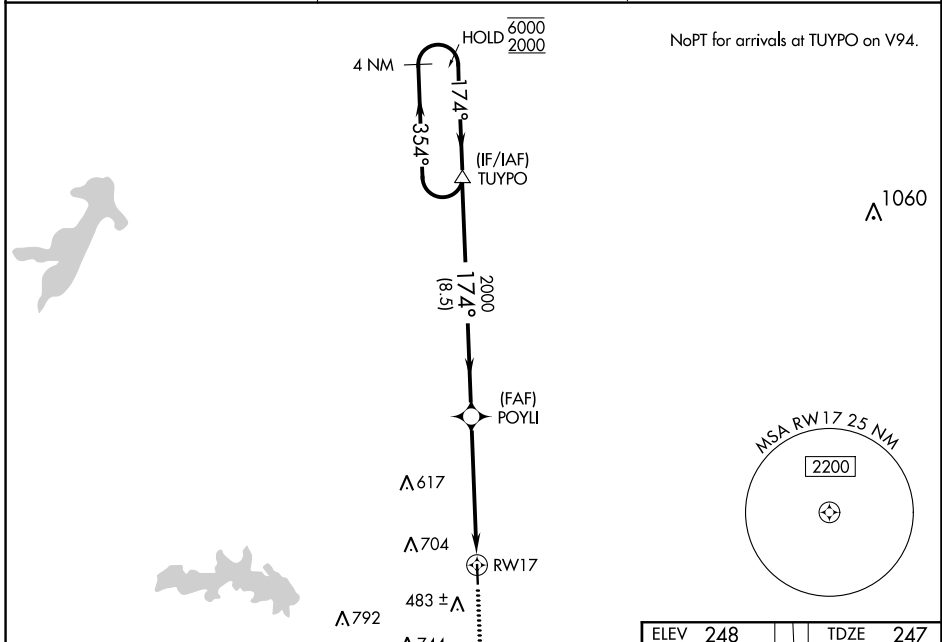
PANOLA COUNTY-SHARPE FLD (4F2)

RNP APCH-GPS.

▲ Procedure NA at night. Rwy 17 helicopter visibility reduction below 1 SM NA. When local altimeter setting not received, use Longview altimeter setting.

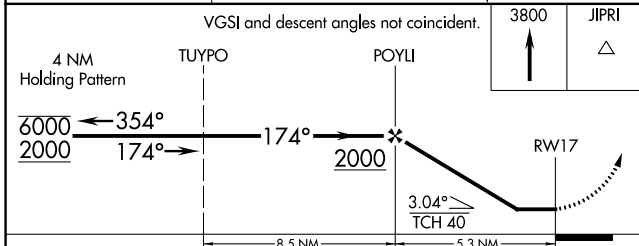
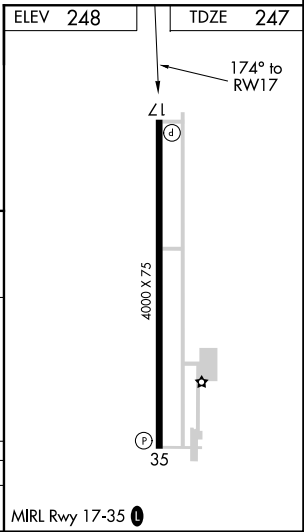
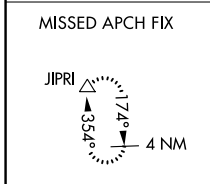
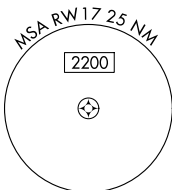
MISSED APPROACH: Climb to 3800 direct JIPRI and hold, continue climb-in-hold to 3800.

AWOS-3PT 121.125	SHREVEPORT APP CON ★ 119.9 335.55	UNICOM 122.8 (CTAF) 0
----------------------------	---	---------------------------------



NoPT for arrivals at TUIPO on V94.

▲ 1060



CATEGORY	A	B	C	D
LNAV MDA	760-1	513 (600-1)	760-1 3/8 513 (600-1 3/8)	NA

MIRL Rwy 17-35 0

SC-2, 22 FEB 2024 to 21 MAR 2024

SC-2, 22 FEB 2024 to 21 MAR 2024

APP CRS	Rwy Idg	4000
354°	TDZE	248
	Apt Elev	248

RNAV (GPS) RWY 35

PANOLA COUNTY-SHARPE FLD (4F2)

RNP APCH-GPS.

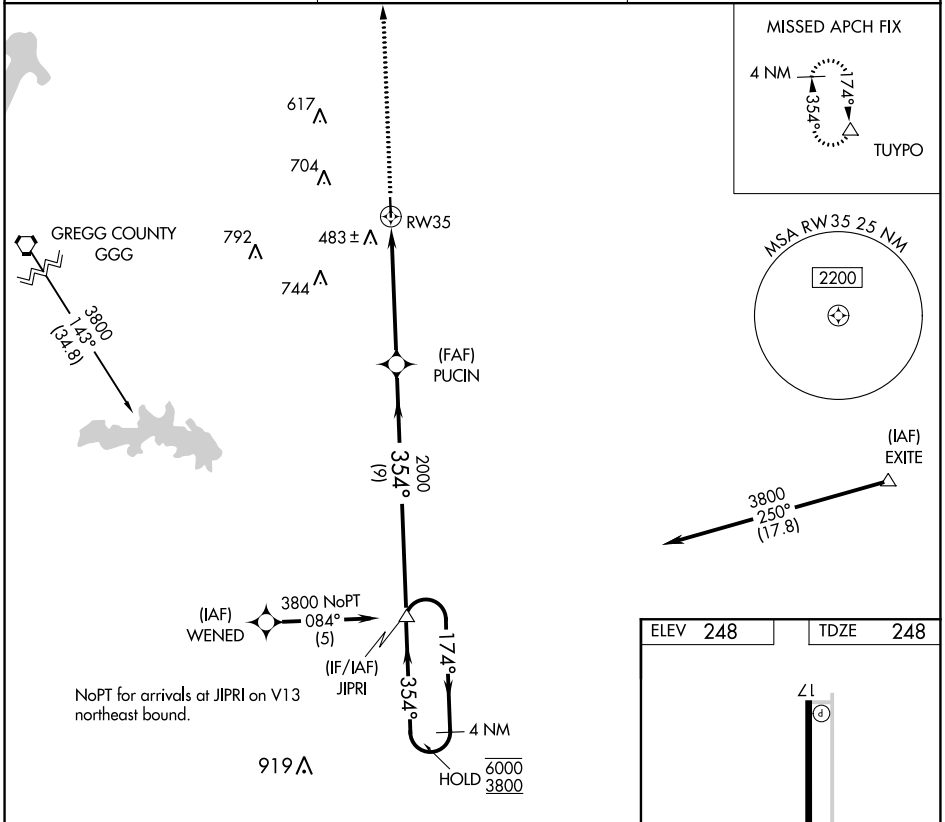
⚠ Rwy 35 helicopter visibility reduction below 3/4 SM NA.
When local altimeter setting not received, use Longview altimeter setting.

MISSED APPROACH: Climb to 2000 direct TUYPO and hold.

AWOS-3PT
121.125

SHREVEPORT APP CON *
119.9 335.55

UNICOM
122.8 (CTAF) 0



SC-2, 22 FEB 2024 to 21 MAR 2024

SC-2, 22 FEB 2024 to 21 MAR 2024

