

WAAS CH 58203 W18A	APP CRS 179°	Rwy Idg TDZE 686 Apt Elev 691	4002
--	------------------------	---	-------------

RNAV (GPS) RWY 18

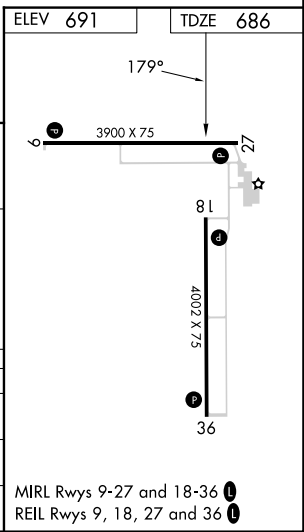
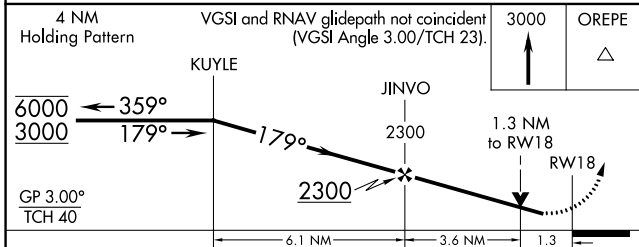
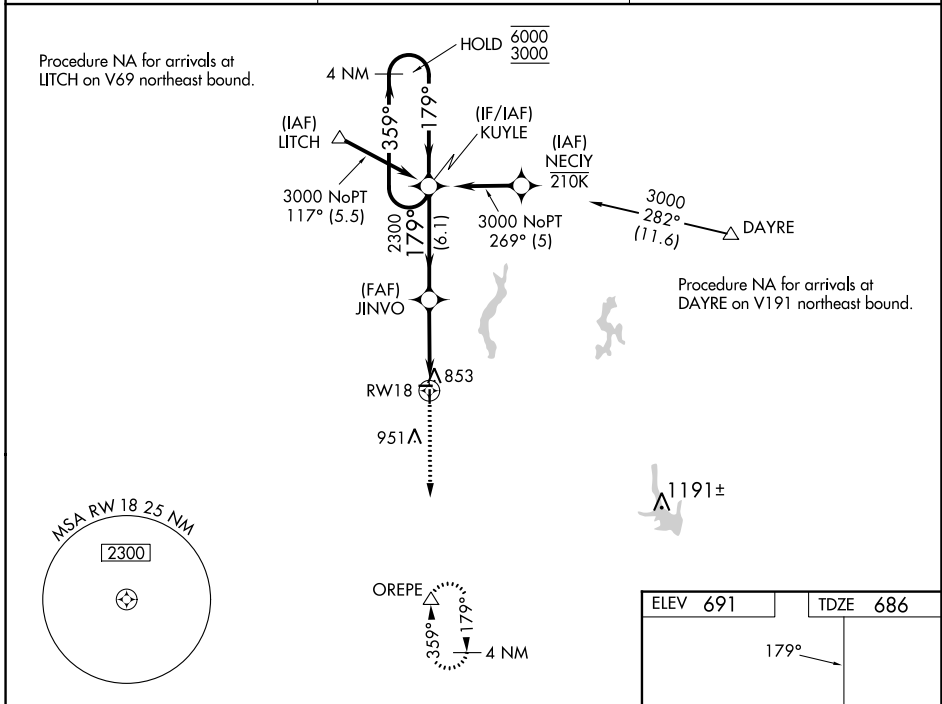
LITCHFIELD MUNI (3LF)

RNP APCH - GPS.

⚠ Baro-VNAV and VDP NA when using Taylorville altimeter setting. Rwy 18 helicopter visibility reduction below $\frac{3}{4}$ SM NA. For uncompensated Baro-VNAV systems, LNAV/VNAV NA below -1.6°C or above 54°C . When local altimeter setting not received, use Taylorville altimeter setting and increase LPV DA to 1025 feet and all visibilities $\frac{1}{8}$ SM, increase LNAV/VNAV DA to 1146 feet and all visibilities $\frac{1}{4}$ SM, increase all MDAs 80 feet and LNAV visibility Cat C $\frac{1}{8}$ SM.

MISSED APPROACH: Climb to 3000 direct OREPE and hold.

AWOS-3PT 118.175	ST. LOUIS APP CON 124.2 353.9	UNICOM 122.8 (CTAF) 0
----------------------------	---	---------------------------------



CATEGORY	A	B	C	D
LPV DA	952- $\frac{7}{8}$ 266 (300- $\frac{7}{8}$)			NA
LNAV/VNAV DA	1073-1 $\frac{1}{8}$ 387 (400-1 $\frac{1}{8}$)			NA
LNAV MDA	1120-1 434 (500-1)		1120-1 $\frac{1}{4}$ 434 (500-1 $\frac{1}{4}$)	

EC-3, 22 FEB 2024 to 21 MAR 2024

EC-3, 22 FEB 2024 to 21 MAR 2024